

Slough Childcare Sufficiency Assessment

2019-2020



Contents

<p>Page</p> <p>3 Background</p> <p>5 Introduction</p> <p>5 Methodology</p> <p>6 Policy direction</p> <p>7 Key findings</p> <p>11 Slough overview</p> <p>12 Population figures</p> <p>14 Autumn term 2019 supply</p> <p>15 Early years childcare and registered childminder places</p> <p>16 Access of provision for 0-4 year olds</p> <p>17 Out of school provision: 5-14 year olds</p> <p>18 Funded 2 year olds</p> <p>19 3 & 4 year old Universal Entitlement</p> <p>20 Extended Entitlement - 30 hours childcare</p> <p>22 Childminders</p> <p>23 Under 2 year old places</p> <p>24 Occupancy and vacancies</p> <p>25 Overview of Funded Early Education Places</p> <p>26 Cost</p> <p>27 Special Educational Needs and Disability</p> <p>28 Workforce</p> <p>29 Staff salaries</p> <p>30 Housing Developments</p> <p>33 Slough Urban Renewal</p>	<p>Page</p> <p>Supply of early years and childcare provision by children centre area</p> <p>35-37 Monksfield Way Children’s Centre Area</p> <p>38-40 Orchard Avenue Children’s Centre Area</p> <p>41-43 St Andrew’s Way Children’s Centre Area</p> <p>44-46 Chalvey Grove Children’s Centre Area</p> <p>47-49 Elliman Avenue Children’s Centre Area</p> <p>50-52 Penn Road Children’s Centre Area</p> <p>53-55 Wexham Road Children’s Centre Area</p> <p>56-58 Yew Tree Road Children’s Centre Area</p> <p>59-61 Romsey Close Children’s Centre Area</p> <p>62-64 Vicarage Way Children’s Centre Area</p> <p>Conclusion and action planning</p> <p>65 Place development 2019-2025</p> <p>70 Appendix 1 Number of children in reception classes autumn 2019</p> <p>71 Appendix 2 ONS population</p> <p>74 Appendix 3 Child poverty</p> <p>75 Appendix 4 Estimating eligibility for the extended entitlement</p> <p>76 Appendix 5 Family Information Service outreach service statistics 2018 - 2019</p> <p>78 Appendix 6 Early years foundation stage data 2019</p>
---	--

Background

The Childcare Act 2006 and 2016 and the associated statutory guidance for local authorities on Early Education and Childcare, June 2018 <https://www.gov.uk/government/publications/early-education-and-childcare--2>, requires Slough Borough Council (the Local Authority) to secure sufficient childcare, as far as is reasonably practicable, for working parents, or parents who are studying or training for employment, for children aged 0-14 (or up to 18 for disabled children).

The duty is detailed in the following sections of the Acts:

Childcare Act 2006

Section 6 secures sufficient childcare for parents;

Section 7 secures early years provision free of charge;

Section 7A discharges its duty;

Section 9 gives local authorities the power to attach requirements to the arrangements they make with providers (other than the governing body of a maintained school) to deliver childcare including free early years provision;

Section 9a allows regulations to be made which prescribe the requirements local authorities may or may not impose when they make arrangements;

Section 12 provides information, advice and assistance to parents about childcare in the area;

Section 13 secures the provision of information, advice and training to childcare providers and childcare workers

Childcare Act 2016

Section 1 places a duty on the secretary of state to secure the equivalent of 30 hours free childcare over 38 weeks of the year for qualifying children;

Section 2 allows the secretary of state to discharge her duty under section 1 of the Act by placing a duty on English local authorities to secure free childcare for qualifying children;

To secure sufficient childcare places, local authorities should take into account:

- what is 'reasonably practicable' when assessing what sufficient childcare means for their area;
- the state of the local childcare market, including the demand for specific types of providers in a particular locality and the amount and type of supply that currently exists;
- the state of the labour market including the sufficiency of the local childcare workforce;
- the quality and capacity of childcare providers and childminders registered with a childminder agency, including their funding, staff, premises, experience and expertise;
- what schools in their area are offering or able to offer for out-of-hours childcare from 8.00am until 6.00pm and in school holidays;
- if existing providers are able to expand their provision and what new providers are going to enter the local childcare market; and
- if providers take a sustainable business approach to planning and signpost providers to resources to support them.

The Local Authority is responsible for determining the appropriate level of detail in the report, geographical division and date of publication. However, the report should include:

- a specific reference to how we are ensuring there is sufficient childcare available to meet the needs of: children with special educational needs and disabilities; children from families in receipt of the childcare element of Working Tax Credit or Universal Credit; children with parents who work irregular hours; children aged two, three and four taking up free places; school age children; and children needing holiday care.
- Information about the current and projected supply and demand of childcare for particular age ranges of children, and the affordability, accessibility and quality of provision; and
- Details of how any gaps in childcare provision will be addressed.

In addition, the Local Authority is required by legislation to maintain a service that provides information, to parents and prospective parents on the provision of childcare in their area, as listed in Schedule 1 of the Childcare Act 2006 and from 1st September publish this information electronically on the local authority website and update it, at a minimum termly on 1st January, 1st April and 1st September, ensuring parents are aware of:

- Early education places for two, three and four year olds;
- The option to continue to take up their child's 15 hour early education place until their child reaches compulsory school age;
- How to identify high quality provision in their area.



Introduction

The Slough Childcare Sufficiency Assessment (CSA) refresh provides an overview of the childcare market in Slough and covers the period from autumn 2018 to autumn 2019.

The context within which an early years and childcare sufficiency assessment is compiled can fluctuate considerably from year to year. The early years sector is demonstrably volatile within relatively short timescales, making place planning more complex and necessitating on-going processes.

The Local Authority has a statutory duty to ensure that there are sufficient places for every child eligible for Free Early Education. These places are developed and offered by providers who respond to localised changes in demand, recruitment and retention issues, rent increases, competition and new national initiatives by altering their offer.

Therefore, across the borough, small changes in a few localities can have an affect on supply in the short and/or medium term thereby altering place development requirements that may or may not be lasting.

The council's Five Year Plan

We are specifically aiming to deliver Outcome 1 of the council's overarching Five Year Plan 2019-2024: "Slough children will grow up to be happy, healthy and successful". However, there are strong links with all the other outcomes to achieve our vision. Some people are more likely to choose to live and work in Slough if they have access to high quality education and childcare for their children.

- Outcome 2: Our people will be healthier and manage their own care needs
- Outcome 3: Slough will be an attractive place where people choose to live, work and stay
- Outcome 4: Our residents will live in good quality homes
- Outcome 5: Slough will attract, retain and grow businesses and investment to provide opportunities for our residents

The Childcare Sufficiency Assessment links with other relevant strategies and plans

- Slough Multi-Agency Early Help Strategy 2019-2020
- Early Years Strategy 2018-2021
- Early Years Workforce Strategy 2018-2021
- School Places Strategy 2018-2023
- Slough's Corporate Parenting Strategy 2019-2020
- Joint Strategic Needs Assessment 2018
- Economic Development Plan for Growth 2014-2018
- Asset Management Plan 2014-2017
- Capital strategy 2017-2023
- Housing strategy 2016-2021

Methodology

Supply information has been gathered using the provider annual audit which was completed at the end of the Summer Term. All providers were contacted electronically in the Autumn Term to update their participation and vacancy information specifically regarding funded early education places.

We have drawn on other data to inform this refresh including:

- Early Years and School census January 2019
- ONS 2017-18
- Slough Borough Council Housing Strategy
- Family Information Service statistics
- Health data February 2017-2018
- An accepted yield formula applied by a number of UK local authorities with regard to the planning of their sufficiency of school places
- Statistics: Early Years and Childcare: <https://www.gov.uk/government/collections/statistics-childcare-and-early-years>

Policy direction

There are a number of policy initiatives that had an impact on the outcomes of the childcare sufficiency during 2018-2019 and some of these continue to be influential through 2019-2020. These include:

- National Living Wage
- Tax Free Childcare
- Free 30hrs Childcare Extended Entitlement
- Free 2 year old funding entitlement
- Early Years National Funding Formula
- Benefit reforms including the introduction of Universal Credit
- Brexit and general election

The Childcare Sufficiency Assessment will focus on the impact of these policy changes specifically on the increase in demand for new early years and childcare places across the borough.

Demographics

Slough is an urban town in the east of Berkshire, approximately 20 miles west of central London. It is home to 42,365 children and young people, 13,188 of which are aged 0-4. Out of a total population of approximately 145,734, this equates to 29% being below the age of 19, making the population of Slough significantly younger than the average for south east local authorities. The borough also includes a higher proportion of young adults aged 25-44, suggesting a large number of young families are resident.

(Source: ONS 2015 Mid-Year Population Estimates - June 2016)

Slough unitary authority area was ranked 79th out of the 326 English local authorities for deprivation

in the 2015 Indices of Deprivation, significantly more deprived than other east Berkshire areas:

Reading (143rd), Bracknell Forest (287th) and Windsor and Maidenhead (306th).

(Source: Department for Communities and Local Government - Sep 2015)



Key findings

Population figures for 0-4 year olds living in Slough

The total projected population of Slough in 2016 is estimated to be 149,400. This is based on 2012 population trends. As a proportion of the total population, there are a lot more young children aged 0 to 9 who live in Slough than the national average. There is also a higher proportion of young adults - aged 25 to 44 - who live in Slough. This suggests there are a lot of young families who live in Slough. There is a much smaller older population who live in Slough than the national average.

Early Years Foundation Stage Data 2019

- 71.8 % of children in England achieved a GLD in 2019 and 74.3 % of children in Slough achieved a GLD. This is an upward increase in Slough for the third time in a row.
- We have a GLD that is 2.5% above the national average
- Gender gap 13.3% (National 12.9%) Girls Good Level of Development 80.5% and Boys Good Level of Development 67%

Under 2 year olds

- There has been a decrease in the number of places for under 2 year olds across Slough in group settings and with childminders which mirrors the national trend.
- Providers are not reporting specific demand for places or reporting children on their waiting lists requiring a space which the provider can not offer.
- An additional 20 places for under 2 year olds could be offered by childminders if required, as childminders will respond to demand

2 year old funding

- The DWP list in 2019 showed 739 families potentially eligible for 2 year old funding, this has reduction of 172 children since 2018
- In 2017 Monksfield Way, Chalvey Grove and Penn Road Children's Centres saw the highest percentage of eligible 2 year olds but in 2019 Orchard Avenue and Penn Road Children's Centres saw the highest percentage.
- Chalvey Grove Children's Centre area still has the highest number of 2 year olds living in the borough.
- The number of 2 year old places being offered across Slough has increased from 799 to 1,136 however settings have only identified 579 places for funded 2 year olds. The overall calculations look at all 2 year old places.
- Headcount data for October 2019 figures show that 61% of funded 2 year olds were accessing a place.

3 & 4 year old universal funding (15 hours, 38 weeks per year)

- Indicative figures show that participation rates are approximately 68% for the autumn term 2019
- Current number of places available across Slough is 3,690
- We can see that some areas of Slough there are more places than are actually required according to birth data, such as Monksfield Way, Elliman Avenue, Wexham Road and Romsey Close however in some of these areas there are more children than expected accessing their universal entitlement. This illustrates that parents are willing to travel into the different areas in order to access a funded place.

Extended Entitlement - 30 hours childcare

- The DfE estimated that 1,689 places would be required in Slough for the extended entitlement - 30 hours childcare in 2019.
- In autumn 2019, 610 children were accessing the extended entitlement in Slough.
- The annual provider audit showed that we should have had 1,026 places available in the autumn term 2019 for 30 hour places; this is an increase of 75 places since 2018/19.
- Since summer 2018 the number of children in a place has increased by 41
- Between the spring term 2018 and spring term 2019 there was an increase of 146 children accessing an extended entitlement place.

Gaps in provision

- Overall across Slough there is a deficit of 192 (2 year old places) however the Monksfield Way, Elliman Avenue, Wexham Road and the Romsey Close CCA have an over supply of places
- Overall across Slough there is a deficit of 346 (universal 3 & 4 year old places) however the Monksfield Way, Elliman Avenue, Wexham Road and the Romsey Close CCA have an over supply of places
- Overall across Slough there is a deficit of 628 (extended entitlement places) and all areas excluding Romsey Close require more places or universal places to be converted to extended entitlement places
- Further analysis is needed to evaluate the participation rates of additional paid for childcare to consider the need for future development across Slough
- Since the 2018/19 CSA we have seen a reduction in the number of early years providers and in some areas a decrease in the number of actual places offered.

Childminders

- Since 2013 there has been a 35% decrease in the number of registered childminders. Nationally since 2013 there has been a 30% decrease in the number of registered childminders.
- Future recruitment and retention work is required to raise and retain the number of childminders in certain areas of Slough
- Since spring 2019 there has been a decrease of 5 childminders in Slough

Out of School Provision

- There is a decrease in the number of places offered in Out of School provision across Slough.
- Breakfast club places have decreased by 361, after school places have decreased by 115 places and holiday provision places have decreased by 17 places.
- Not all providers completed the annual audit form but those that did reported vacant places. Some providers also stated that if demand for places increased then they would have capacity to increase the number of places they offer.

Cost

- The average cost of childcare in private, voluntary and independent settings and schools is £6.18 per hour. This is an increase of £0.50 compared to the 2018/19 CSA.
- The highest average cost appears to be in the Wexham Road CCA for an under 2 year old place and the lowest average cost in Romsey Close CCA for a 3 & 4 year old place.
- Out of School provision mainly considers breakfast and after school charges and the Slough average amount is £3.54. The lowest recorded amount is in the Penn Road CCA and the highest in Elliman Avenue CCA.
- The average cost with a childminder is £5.41 which is an increase of £0.23 compared to the last CSA in 2018/19.

- Across the sector salary costs vary considerably according to different roles and qualification levels. The highest paid salaries are in schools and independent schools and the highest recorded salary of a practitioner with QTS was approx. £31.22 per hour, EYP £29.90 per hour, level 3 £19.86 per hour and level 2 £16.35 per hour.

Workforce Development

- The Early Years Workforce Strategy 2018-2021 <http://www.slough.gov.uk/council/strategies-plans-and-policies/early-years-workforce-strategy.aspx> was published in 2018 and was produced to support the development of new early years and childcare provision in Slough. In order to create new early years and childcare places we need to ensure a high quality workforce.
- The strategy aims to support the early years sector to remove the barriers to attracting, retaining and developing the workforce in line with guidance published by the DfE <https://www.gov.uk/government/publications/early-years-workforce-strategy>. The strategy considers how the sector can attract people to consider a career in early years and childcare.
- Addressing Slough's place development beyond 2019 focuses on recruitment of new people to join the workforce which will help settings in their expansion to provide the additional places for children identified by the CSA refresh.
- Retaining staff members already working for settings in Slough by offering good affordable CPD in a range of topics to support good practice (detailed in the Early Years Service Professional Development Portfolio).
- A few settings in Slough have not seen many changes to their staff team, holding on to existing staff over a number of years, others report that finding quality staff is difficult as the number of suitable applications for advertised jobs are low.

- Managers frequently express concerns about the quality of the applications particularly in relation to the limited number of applicants who hold level 3 qualifications in early years and childcare.

Special Educational Needs and Disability

- Additional SEND funding supplements were implemented in April 2017 to meet the needs of children with additional needs and disabilities. This includes an Inclusion Fund for lower-level or emerging special educational needs and a Disability Access Fund for children with a disability or higher-level needs.
- All settings are encouraged to create inclusive environments and meet the needs of all individual children, with each provider having an identified SENDco.
- In addition, the Local Authority SEND coordinator works with early years settings to equip them in meeting the needs of children with requirements related to their disability/additional needs.
- 25 children 0-4 years old (excluding 4 year olds in reception classes) currently have an Education, Health and Care Plan as of December 2019
- 35 children under 5 years old are currently accessing an early years setting and have 1:1 funding to support them as of December 2019
- 5 early years' children are currently being supported in their home environment because of their complex needs and they are not yet in a group setting. These children are being supported by an early year's specialist teacher and/or the Early Years Service SEN outreach team.
- 29 early years children are being supported with their early education by specialist teachers via CAPS (Children's Activities, Parental Support) - for families of children with Special Educational Needs and Disabilities (SEND). CAPS play and learn sessions opened in April 2019.

- There are 3 SEND resource bases for early years (nursery children) with a combined offer of 24 part time equivalent places (PTE).
- There is 1 specialist school in the borough offering 8 full time equivalent (FTE) places to nursery aged children.

Housing developments

- The Government's Strategic Housing Market Assessment (SHMA) has identified the need for Slough to provide 927 new homes each year up to 2036.
- Slough Borough Council is anticipating that approximately 6073 properties will be completed over the next 5 years.

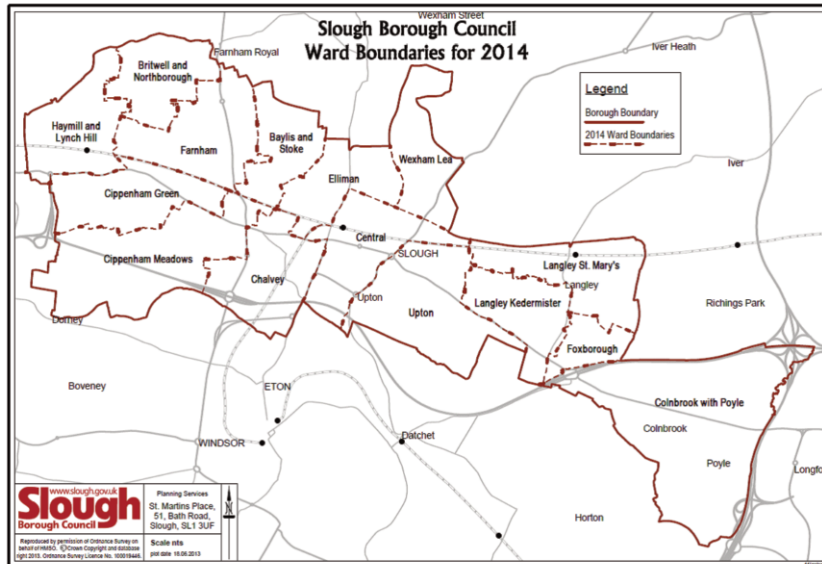
- In the years 2019-2032 it is anticipated that 9708 residential properties will be developed in Slough for which the local authority may seek a legal agreement with the applicant who may apply for planning permission, otherwise known as a section 106. This figure includes residential development sites of 100 or more homes that have not applied for planning and therefore should only be used as an estimated amount.

Transport

- Slough is bordered by major motorways (the **M4** and **M25**) and an international airport at Heathrow. There are over 300 bus journeys per day and with **rail links** to London and Reading, to be further improved with the arrival of **CrossRail** in coming years.

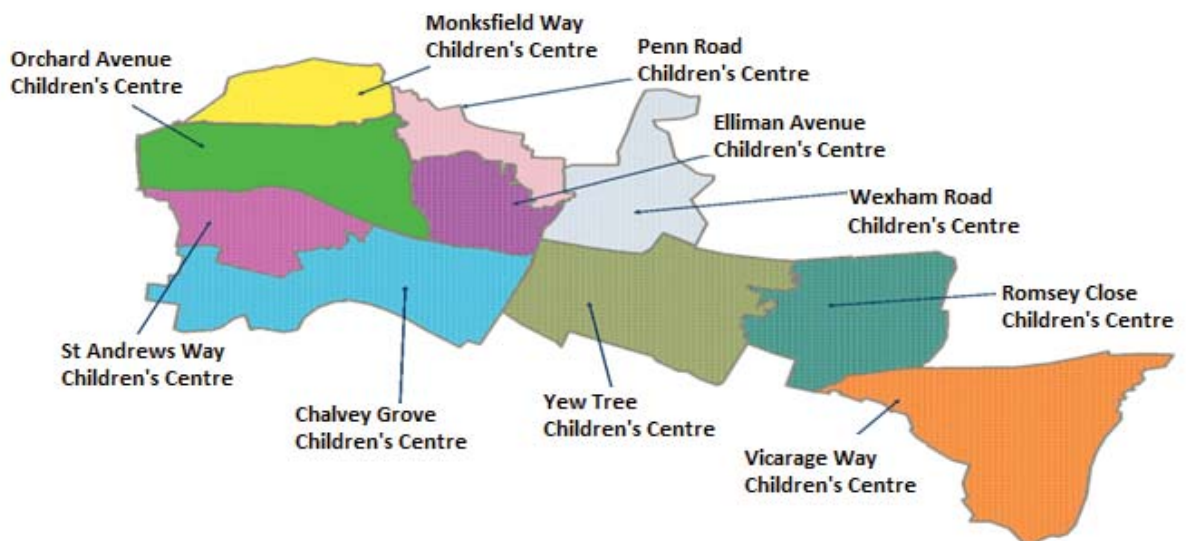


Overview



- Slough is made up of 14 wards
- It is bisected by the A4 (connecting Bath to London) and the Great Western Main line.
- It covers an area of 32.54 sq. mi (or 12.56km²) and is approx. 20 miles (30 kilometres) west of central London.

The Slough Early Years Service works across 10 children’s centre areas which do not align with the ward boundaries of the borough. The map below shows how Slough is split into the 10 children’s centre areas which, when originally defined, were based on each area having equal numbers of under 5 year olds and aligned to Super Output Areas.



Population

According to data supplied by public health (numbers of children registered with a GP) in 2018-2019 Chalvey Grove CCA had the highest population of under 5 year olds living in Slough, followed by Yew Tree Road and Romsey Close CCAs respectively.

ONS population projections

The projections take the *revised mid-2016 population estimates*, published on 22 March 2018, as their starting point. The projected local authority populations for each year are calculated by ageing on the population from the previous year, applying local fertility and mortality rates to calculate the number of projected births and deaths, and then adjusting for migration into and out of each local authority.

ONS derive local authority fertility, mortality and migration assumptions using estimated values from the five years before the base projection year.

CCA	Number of 0-4 year olds/CCA (NHS 2018-2019)	
Monksfield Way	784 ↓	6.33%
Orchard Avenue	1,112 ↓	8.98%
St. Andrew's Way	1,155 ↓	9.33%
Chalvey Grove	1,935 ↓	15.62%
Elliman Avenue	1,221 ↓	9.86%
Penn Road	1,071 ↓	8.65%
Wexham Road	1,286 ↓	10.38%
Yew Tree Road	1,748 ↑	14.11%
Romsey Close	1,561 ↓	12.60%
Vicarage Way	513 ↓	4.14%
Total	12,386	100.00%

	2018	2019	2020	2021	2022
0 years	2,411	2,373	2,330	2,293	2,239
1 years	2,421	2,414	2,378	2,337	2,300
2 years	2,651	2,425	2,419	2,383	2,344
3 years	2,584	2,651	2,433	2,427	2,392
4 years	2,626	2,583	2,645	2,435	2,430
5 years	2,649	2,625	2,583	2,643	2,438
6 years	2,692	2,639	2,614	2,573	2,630
7 years	2,638	2,678	2,625	2,597	2,558
8 years	2,616	2,628	2,670	2,617	2,589
9 years	2,490	2,615	2,628	2,671	2,617
10 years	2,422	2,488	2,610	2,622	2,668
11 years	2,434	2,406	2,468	2,587	2,602
12 years	2,301	2,422	2,397	2,457	2,572
13 years	2,105	2,291	2,410	2,387	2,444
14 years	1,990	2,107	2,290	2,407	2,387
Total	149,890	150,916	151,859	152,723	153,493

<https://www.ons.gov.uk/peoplepopulationandcommunity/populationandmigration/populationprojections/bulletins/subnationalpopulationprojectionsforengland/2016based#nearly-all-local-authorities-are-projected-to-grow-by-mid-2026>

"While the overall populations of all regions in England are projected to increase over the next decade, reasons for these increases vary greatly depending on where you live. For instance, projected population change in London is mainly caused by natural change - the difference between the number of births and deaths - and not migration. This is because London's net inflow of international migrants is offset by a similar number of people moving to other parts of the UK. That contrasts with the North East, where growth is mostly down to migration. What's also clear is that the population is ageing in all regions, with the number of people aged 65 and over growing considerably faster than younger age groups." *Andrew Nash, Population Projections Unit, Office for National Statistics*



Autumn term 2019 supply of early years and childcare provision

Type of formal childcare	Number of registered providers	Number of registered places PTP	Percentage of Slough registered places
Nursery class in a Maintained school	25	1,705	17.74%
Nursery class in an Independent sector setting	3	296	3.08%
Day nursery - full or part-time	14	1,838	19.13%
Pre-School/Playgroup sessional childcare	13	684	7.12%
Children's Centre nursery full daycare	4	372	3.87%
Children's Centre nursery sessional daycare	6	208	2.16%
Maintained Nursery School	5	816	8.49%
Total Early Years & Childcare	70	5,919	61.59%
Registered Childminder	117	739	7.69%
Home Childcare (own home)	24	48	0.50%
Total Home-Based Childcare	141	787	8.19%
After School Club	33	954	10%
Breakfast Club	38	1,352	14%
Holiday Play scheme	26	592	6.16%
Total Out of School Childcare	86	2904	30.22%

Since the 2019 CSA we have seen an increase in the number of early years providers and therefore an increase in the number of registered places. Places have increase for 0-5 year olds by 510. There has been a decrease of 5 childminders but an increase of 2 home childcarers.

There has been an increase in the number of out of school providers but an overall decrease in the number of places. Many holiday clubs are only open for a few weeks in the year and some do not open every day of the week choosing to open 2 or 3 days per week.

Early years childcare and registered childminder places for 0-4 year olds

The table below shows the population of each CCA and how each area could be regarded as having sufficient places for 0-4 year olds if the percentage of 0-4 year olds living within that CCA is less than or *within* 1% of the corresponding percentage of theoretical supply for 0-4 year olds.

Aligned to this particular quantitative methodology, it can therefore be concluded that in autumn 2019, four Children's Centre Areas did not, theoretically, have (statistically) sufficient early years childcare places for 0-4 year olds:

- Chalvey Grove Children's Centre Area
- Elliman Avenue Children's Centre Area
- Penn Road Children's Centre Area
- Yew Tree Road Children's Centre Area

The four CCAs which could be regarded as not having sufficient places for 0-4 year olds is comparable to the CSA 2018/19 identified areas apart from the added area of Elliman Avenue Children's Centre. However this methodology only considers population size assuming every under 5 year old would want an early years and childcare place. To gain a more accurate picture of the supply of early years and childcare places for 0-4 year olds we need to consider access rates across each CCA.

Further analysis of this is considered below when looking at 100% participation of universal 3 & 4 year old funded early education and the potential access of provision for 1,662 (2,020) children for the extended entitlement for 30 hours childcare, along with the DWP target number for funded early education for 2 year olds.

Children's Centre Area	Number of 0-4 year olds/CCA (NHS 2018-2019)	% of Slough's 0-4 year olds living in CCA(NHS 2018-2019)	Supply of early years childcare and childminding places/CCA for 0-4 year olds	% of Slough's supply of early years childcare and childminding places for 0-4 year olds	Concluded Sufficiency Yes/No? for 0-4 year olds*
Monksfield Way	784	6.33%	593	9.85%	Yes
Orchard Avenue	1,112	8.98%	515	8.55%	Yes
St. Andrew's Way	1,155	9.33%	504	8.37%	Yes
Chalvey Grove	1,935	15.62%	732	12.16%	No
Elliman Avenue	1,221	9.86%	367	6.09%	No
Penn Road	1,071	8.65%	445	7.39%	No
Wexham Road	1,286	10.38%	735	12.21%	Yes
Yew Tree Road	1,748	14.11%	750	12.45%	No
Romsey Close	1,561	12.60%	1,170	19.43%	Yes
Vicarage Way	513	4.14%	211	3.50%	Yes
Total	12,386	100.00%	6,022		

Access of provision for 0-4 year olds

Children's Centre Planning Area	Number of 0-4 year olds/CCPA (NHS 2018-2019)	Reported supply of early years childcare and childminding places/CCPA for 0-4 year olds	Childcare Access Rate Percentages for 0-4 year olds living in CCA 2019/20
Monksfield Way	784	593	76%
Orchard Avenue	1,112	515	46%
St Andrew's Way	1,155	504	44%
Chalvey Grove	1,935	732	38%
Elliman Avenue	1,221	367	30%
Penn Road	1,071	445	42%
Wexham Road	1,286	735	57%
Yew Tree Road	1,748	750	43%
Romsey Close	1,561	1,170	75%
Vicarage Way	513	211	41%

Since autumn 2018 St Andrews Way, Penn Road and Vicarage Way CCA has seen the biggest increase in the number of places accessible to the population for these areas and Elliman Avenue CCA has seen a slight decrease in the number of places. However due to the decrease in the population of 0-5 year olds in Slough all areas have seen an increase in the number of places accessible to the population in each area. This provides us with an indication that some areas in Slough have a higher number of places for the population size such as Monksfield Way and Romsey Close CCAs. This information should not be considered in isolation as other factors will

impact on current and future demand such as potential housing developments in each CCA and other developments which attract people into the area, cross rail, Heathrow expansion and the Slough trading estate and so on and so forth.

Overall the number of places per CCA accessible to the population for that area is lower in the following:

- Elliman Avenue CCA
- Chalvey Grove CCA
- Penn Road CCA
- Yew Tree Road CCA

Out of school provision: 5-14 year olds

There appears to be a substantial decrease in the number of places offered in Out of School provision across Slough. We have seen a number of providers reduce the number of places they offer and many have told us that this is due to lack of demand. Schools recorded on their annual audit that they would be able to increase their numbers if demand were to increase.

Out of School Places

Children's Centre Planning Area	BC	ASC	Holiday
Chalvey Grove	38	16	8
Elliman Avenue	55	24	30
Monksfield Way	116	131	99
Orchard Avenue	80	80	31
Penn Road	55	41	16
Romsey Close	186	196	86
St. Andrew's Way	90	90	95
Vicarage Way	60	0	0
Wexham Road	285	187	102
Yew Tree Road	387	189	125
	1,352	954	592

Slough also has a number of specialist clubs running in the borough which are not required to register with Ofsted due to the nature of their organisation.

Out of School Access rate

Type	Population of 5-14 year olds (ONS 2018)	Supply of places	Access Rate
Breakfast Club	18,574	1,352	7.30%
After school Club	18,574	954	5.10%
Holiday	18,574	592	3.20%
		2,898	15.60%

The access rate for out of school provision has increased by 1.6% since the last CSA.

Tuition Organisations registered with Ofsted

The number of places offered by tuition organisations can vary according to each provider, some may offer one to one tuition and some may offer up to 40 places per class. Many parents do not use tuition organisations for childcare purposes. Often the timings of the classes can vary according to what the parents choose to book.

Children's Centre Area	Tuition organisations registered with Ofsted	Tuition places
Chalvey Grove	2	80
Elliman Avenue	1	40
Monksfield Way	0	0
Orchard Avenue	0	0
Penn Road	1	40
Romsey Close	2	80
St. Andrew's Way	0	0
Vicarage Way	0	0
Wexham Road	1	40
Yew Tree Road	0	0
Total	7	280

2 year old Funded Early Education criteria

Two year olds from families in receipt of certain benefits and with an income of £15,400 or less per year are eligible for a free early education place.

Benefits

- Income Support
- Income-based Jobseekers Allowance
- Income-related Employment and Support Allowance
- Support under Part VI of the Immigration and Asylum Act 1999
- the guaranteed element of State Pension Credit

- Child tax credit or Working tax credit with an annual gross income into the household that is no more than £16,190
- Universal Credit if a parent is entitled to Universal Credit they must have an annual net earned income equivalent to and not exceeding £15,400, assessed on up to three of the parent's most recent Universal Credit assessment periods.

Chalvey Grove Children's Centre Area has the highest number of 2 year olds living in the borough. The Children's Centre Areas with the highest % of eligible 2 year olds can be found in the Orchard Avenue and Penn Road CCAs.

CC	Health data of 2 year olds for 2019	Potential number of 2 year olds eligible for funding June 2019 (DWP)	% of eligible 2 year olds per CCA
Monksfield Way	155	38	24%
Orchard Avenue	197	74	38%
St. Andrew's Way	220	53	24%
Chalvey Grove	377	124	33%
Elliman Avenue	264	80	30%
Penn Road	212	85	40%
Wexham Road	267	88	33%
Yew Tree Road	327	101	31%
Romsey Close	331	64	19%
Vicarage Way	99	32	32%
Total	2,449	739	

3 & 4 year old universal entitlement

When considering the number of universal places required for 3 & 4 year old provision we need to consider the number of 4 year olds attending a reception place. The table below shows the current numbers on roll as per headcount data autumn 2019 and the total number of places against the number of children who may require a universal 3 & 4 year olds place.

Overall across Slough we have 3,690 universal places for 3 & 4 year olds which is 503 more places than required. The number of places required has dropped since the last CSA due to a lower population figure for this age group.

CCA	3 & 4 year old universal on roll	Total number of 3 & 4 year old places universal	Target number = 3 & 4 year old population minus 4 year olds in reception classes census 2018
Monksfield Way	140	323	110
Orchard Avenue	179	243	348
St. Andrew's Way	188	289	307
Chalvey Grove	63	459	586
Elliman Avenue	261	427	328
Penn Road	149	312	302
Wexham Road	331	425	236
Yew Tree Road	193	496	519
Romsey Close	385	600	271
Vicarage Way	64	116	180
	2,176	3,690	3,187

30 hours Childcare - Extended entitlement

The extended entitlement criteria:

A child will be entitled to the additional free hours from the term after both of the following conditions are satisfied:

- (1) the child has attained the age of three;
- (2) the child's parent has a current positive determination of eligibility from HMRC.

Parents must be working (both parents in a two parent household or one parent in a one parent household) and earning the equivalent of 16 hours per week at the national minimum or living wage and not more than £100,000 per year. If they are self employed, or on a zero hour contract they are asked to confirm that they meet the income threshold outlined above.

In order to forecast the number of places required in Slough for the extended entitlement we used the DFE's process infographic for estimating our local authority's eligibility for 30 hours. This enabled us to work out projected number of children's who could be eligible between 2018-2023. Please see appendix 4.

Each area uses the projected population of 3 & 4 year olds living in that children's centre area and therefore as expected Chalvey Grove and Yew Tree Road CCAs have the highest number of eligible children.

	Projections at April 2018					
	2018	2019	2020	2021	2022	2023
Monksfield Way	108	106	110	107	106	104
Orchard Avenue	148	156	146	142	140	138
St. Andrew's Way	175	162	144	141	138	136
Chalvey Grove	257	254	254	248	244	240
Elliman Avenue	167	174	175	171	168	165
Penn Road	141	151	152	148	146	143
Wexham Road	172	178	181	176	173	170
Yew Tree Road	224	236	222	218	213	209
Romsey Close	213	201	209	203	200	197
Vicarage Way	72	71	69	67	66	65
Total	1,677	1,689	1,662	1,621	1,594	1,567

Extended Entitlement 30 hour codes - Slough

	DFE indicative eligibility figure	Eligibility codes issued	Codes validated (number)	Codes validated (%)	Children in a 30 hours place	Children in a 30 hours place as a percentage of codes issued (%)
Autumn 2017	1,060	577	484	84%	400	69%
Spring 2018	1,060	880	758	86%	643	73%
Summer 2018	1,060	1,020	892	87%	825	81%

	LA indicative eligibility figure	Eligibility codes issued	Codes validated (number)	Codes validated (%)	Children in a 30 hours place	Children in a 30 hours place as a percentage of codes issued (%)
Autumn 2018	1,677	677	608	90%	597	88%
Spring 2019	1,689	924	808	87%	789	85%
Summer 2019	1,689	1,117	958	86%	866	76%
Autumn 2019	1,689	Unknown	Unknown	Unknown	610	Unknown

Slough Childminders

Childminder registrations 2013-2019

In the autumn 2019 there are 117 registered childminders; currently 5 are inactive and not working. Since 2013 there has been a 35% decrease in the number of childminders in Slough (this follows a national trend).

Since 2013 Romsey Close and St. Andrew's Way Children's Centre areas have seen the biggest decrease in the number of registered childminders. This is most likely because they are the two areas with the higher percentage of registered childminders.

Children's Centre Area	Autumn 2019	Spring 2019	2018	2017	2016	2015	2014	2013
Chalvey Grove	6	6	8	8	8	8	9	11
Elliman Avenue	2	3	6	6	5	5	6	6
Monksfield Way	18	18	17	18	18	17	14	15
Orchard Avenue	12	15	17	16	17	18	19	21
Penn Road	5	3	4	6	6	5	6	6
Romsey Close	20	20	18	21	24	30	31	30
St. Andrew's Way	29	31	33	34	38	40	42	46
Vicarage Way	3	1	2	3	3	5	5	11
Wexham Road	9	9	4	8	9	9	9	10
Yew Tree Road	14	16	14	13	16	18	22	23
	117	122	123	133	144	155	163	179

Under 2 year old places

There are 15 group providers who are offering places for children under 2 year olds.

Childminders can register for 3 children under the age of 5 years old. Out of the 3 children under the age of 5 years old they can have no more than 1 child under the age of 1 year old. They therefore have flexibility in order to reflect demand so the maximum number of places for under 1 year olds

with childminders in Slough is 96 but potentially another 20 places could be offered by childminders. However this could impact on the number of places available to 2, 3 & 4 year olds with childminders.

Currently providers are not reporting specific issues with vacancies or waiting lists for children under 2 years old.

CCA	Registered Under 1 year old FTE places with childminders	Registered Under 2s FTE places in group settings	Total number of places for under 2 year olds
Monksfield Way	11	22	33
Orchard Avenue	9	59	68
St. Andrew's Way	27	0	27
Chalvey Grove	4	6	10
Elliman Avenue	2	12	14
Penn Road	4	9	13
Wexham Road	8	21	29
Yew Tree Road	12	27	39
Romsey Close	15	97	112
Vicarage Way	4	9	13
	96	256	358

Occupancy and vacancies

During the autumn term 2019 all providers were asked to provide the local authority with up to date information regarding the number of places they offer for different age groups. Specific information was gathered regarding 2, 3 & 4 year old funded places and some providers also supplied figures regarding places for under 2 year olds, set out in the table below.

Using headcount data from autumn 2019 we can compare the number of places available versus the number of children accessing a place. This gives us approximate figures which indicate the number of vacant places in each children's centre area. However census figures only show funded children and it is possible that fee paying parents are accessing the vacant places outlined below.



Overview of funded early education places

Participation (autumn term headcount 2019), vacancies and total place available

The Children's Centre area with the largest number of universal places is Romsey Close. This area has the largest number of children participating in 3 & 4 year old funded early education and it also has the largest number of extended entitlement places.

The table below shows the total number of funded places offered by all providers. The places actually available will vary throughout the term according to the demand for different age groups. Therefore the figures above will actually vary in line with place participation rates and should only be used as a guide.

All Provision types	2 year olds on roll	2 year old vacancies	Total number of 2 year old places	3 & 4 year old universal on roll	3 & 4 year old universal vacancies	Total number of 3 & 4 year old places universal	3 & 4 year old 30 hour on roll	3 & 4 year old 30 hour vacancies	Total number of 30 hour places
MW	53	42	87	140	183	323	52	33	85
OA	43	9	47	179	64	243	74	4	78
SA	40	10	45	188	101	289	73	24	97
CG	61	14	66	263	196	459	32	99	131
EA	55	1	53	261	166	427	39	24	63
PR	34	0	34	149	163	312	30	16	46
WR	55	35	88	331	94	425	48	71	119
YT	34	22	54	193	303	496	32	70	102
RC	60	15	74	385	215	600	168	107	275
VW	16	15	31	64	52	116	10	20	30
	451	163	579	2,176	1,514	3,690	558	468	1,026

	Funded	Funded places	Total population/ target number	Number of non funded places	Places required
2 year olds	416	579	739/2,449	557	160/1,892
3 & 4 years universal	2,176	3,690	3,187	N/A	N/A
30 hours	558	1,026	1,689	N/A	663

Costs

The average cost of childcare in private, voluntary and independent settings and schools across Slough is £6.01 per hour. This is an increase of £0.33 compared to the 2018/19 CSA. The highest average cost appears to be for 2 year olds who are accessing less than 25 hours per week. The highest average cost appears to be in the Yew Tree Road CCA and the lowest average cost in St. Andrew's Way CCA.

Out of School provision mainly considers breakfast and afterschool charges and the Slough average amount is £3.54. This is £0.98 less than the average amount recorded in the 2018/19 CSA.

The lowest recorded amount is in Penn Road CCA and the highest amount in Elliman Avenue CCA. The average price of holiday provision across Slough is £3.41 with the highest average cost in Chalvey Grove and Penn Road CCAs and the lowest average cost in Yew Tree Road.

The average cost with a childminder is £5.19 which is a decrease of 2p compared to the last CSA in 2018/19. The highest amount is £8.00 for the care of a child who is attending for less than 25 hours per week.

CC Area	Hourly rates for under 2 year olds		Hourly rates for 2 year old		Hourly rate 3 & 4 year old		Hourly rate out of school	
	Under 25 hours	Over 25 hours	Under 25 hours	Over 25 hours	Under 25 hours	Over 25 hours	Breakfast /ASC	Holiday
Chalvey Grove	£6.40	£6.54	£7.01	£6.00	£5.64	£5.48	£4.27	£4.65
Elliman Ave	£6.30	£5.99	£5.93	£5.71	£6.37	£5.42	£5.00	£3.27
Monksfield Way	£6.81	£6.88	£5.72	£5.76	£5.43	£5.77	£3.32	£4.33
Orchard Ave	£6.40	£6.54	£5.57	£5.66	£6.65	£6.87	£3.67	£4.18
Penn Rd	£6.40	£6.54	£6.37	£6.32	£6.17	£6.04	£2.34	£4.65
Romsey Close	£6.45	£6.17	£6.22	£5.73	£5.72	£5.25	£3.94	£3.26
St. Andrews Way	£0.00	£0.00	£6.00	£5.95	£5.35	£5.30	£4.40	£3.22
Vicarage Way	£6.45	£6.52	£6.15	£6.24	£5.85	£5.96	£0	£0
Wexham Rd	£7.08	£6.55	£6.29	£6.30	£5.63	£5.75	£3.73	£3.73
Yew Tree Rd	£6.40	£6.47	£7.27	£6.99	£7.90	£7.68	£4.25	£2.88
Slough average	£5.87	£5.82	£6.25	£6.07	£6.07	£5.95	£3.54	£3.41

	Under 25 hours	Over 25 hours	Hourly rate out of school
Childminders	£5.44	£4.93	£5.63

Special Educational Needs and Disability

In the autumn term 2019 there were 25 children aged 0-4 year olds (excluding 4 year olds in reception classes) who had an Education, Health and Care Plan.

0-25 years with SEND	2016	2017	2018/19	2019
Under 5 year olds	36	24	97 (this includes children without an EHCP)	25
5-25 years old	986	1291	1254	1487

During the summer term 2018 an audit of all provision was conducted to establish how many children were accessing early years provision who identified as having a special educational need or disability (SEND).

At this time there were 585 children aged 0-4 years known to have a SEND who are accessing a setting/service in Slough. A further audit will be conducted in 2020 to update this record and compare the difference.

Setting type	Number of children	% of children
Children's Centres	150	26%
Childminders	20	3%
Day Nurseries	140	24%
Independent Schools	2	0%
Nursery Schools	102	17%
Preschools	81	14%
Schools with Nursery Classes	48	8%
Early Years Outreach	42	7%
Total	585	

Out of the 585 children 26% and 24% are accessing a children's centre or a day nursery.

In autumn 2019, 39 children were being supported by the early years outreach team via home visits and the new CAPS group, which opened in April 2019. The CAPS group (Children's Activities, Parental Support) supports children with Special Educational Needs and Disabilities (SEND) and their families with play and learning opportunities run by specialist early years teachers.

29 children and families have been invited to attend the CAPS group.

8 children have been supported in their homes, with 3 children needing no further input.

2 children we supported to transition into a nursery setting

The audit in 2018 showed that the highest identified need is speech and language followed by children with ASD.

Type of SEND	Number of children
Speech and Language	296
ASD	82
Physical/Sensory	20
Medical	57
Learning	41
Other	21
Unknown	68
Total	585

Workforce development

The development and publication of an Early Years Workforce strategy aims to support the wider workforce to identify clear career pathways and opportunities for progression. Programmes and developments outlined in the strategy are proposed actions and review points for the early years service over the next few years.

Slough Early Years and Prevention Service works in partnership with training providers to ensure that appropriate training and development is available for potential practitioners. The key objectives of the workforce strategy include recruiting and training more people to become childminders who will offer flexible care outside of core hours, widening the diversity of the workforce by recruiting and retaining male workers and exploring options for people who may be considering a career change and a move into the early years and childcare profession.

The Annual provider Audit 2019 returns:

- 197 practitioners in schools, of which 6 are male
- 314 practitioners in PVI's, of which 7 are male
- 45 practitioners in Children's centres of which 0 are male
- 43 childminders and assistants, of which 9 are male
- 3.67% of the workforce is male

In the last 12 months 15.9% of the sector feels that the number of practitioners in the early years and childcare sector has decreased, 15.9% felt it had increased and 68.2% said that the numbers had stayed the same.

Qualifications	
Number of staff with a QTS qualification	64
Number of staff with EYP Status	16
Number of staff with EYT Status	8
Number of staff with BA, BSc, Bed qualification	30
Number of staff with an Early Years degree	7
Number of staff with a foundation degree	23
Number of staff with a Level 5 in childcare/ Early Years	7
Number of staff with a Level 4 in childcare/Early Years	25
Number of staff with a Level 3 in childcare/Early Years	237
Number of staff with a Level 2 in childcare/Early Years	65
Number of apprentices	33
Number of unqualified staff	71

Staff salaries

Across the sector the staffing salaries vary considerably according to the different roles and qualification levels. The highest paid salaries are in independent schools, with the highest Early

Years lead on approx. £42.92 per hour which is £3.92 per hour more than reported in the last CSA. The highest recorded salary of a practitioner with QTS was approx. £31.00 per hour, EYP £29.90 per hour, level 3 £19.86 per hour and level 2 £16.35 per hour.

	Early Years Lead/ person in charge on a day to day basis	QTS	EYP/EYT/ Room leader	Level 4	Level 3	Level 2	Unqualified	TA qualified	TA unqualified	Apprentice	Lunch cover	Other
Private and Voluntary settings excluding Children's Centres	£20.82	£22.94	£17.85	£13.26	£12.07	£10.59	£10.04	£11.76	£10.41	£4.60	£11.25	£14.75
Private and Voluntary settings including Children's Centres	£20.82	£22.94	£17.85	£12.96	£12.07	£10.58	£10.04	£11.76	£10.41	£4.60	£11.25	£14.75
Preschools only	£20.82	n/a	£17.85	n/a	£12.15	£10.71	£10.04	n/a	n/a	£3.90	£15.08	n/a
Schools only	£17.85	£13.26	£13.61	n/a	£10.69	£10.04	£11.76	£10.41	n/a	£11.59	£18.02	n/a
Independent Schools	£20.56	£23.79	£17.78	£13.17	£12.80	£11.11	n/a	n/a	n/a	n/a	£11.36	n/a
Day nursery only	£20.82	£22.94	£17.85	£12.96	£12.07	£10.58	£10.04	£9.53	£9.53	£4.60	£11.25	n/a
All	£20.82	£22.94	£17.85	£12.96	£12.07	£10.58	£10.04	£11.76	£10.41	£4.60	£11.25	£14.75

Housing Developments

The Government’s Strategic Housing Market Assessment (SHMA) has identified the need for Slough to provide 927 new homes each year up to 2036. Slough’s Housing Strategy “commits the council to proactively promoting the development of new homes, including delivering or facilitating the provision of at least 200 new homes each year. However, the success of the Strategy will depend also on the activities of others, including private developers, statutory agencies, the voluntary sector, housing associations, and our regeneration partner Slough Urban Renewal and residents themselves.”

<http://www.slough.gov.uk/council/strategies-plans-and-policies/housing-strategy.aspx>

Slough’s Five year projected housing completions 2019-2023

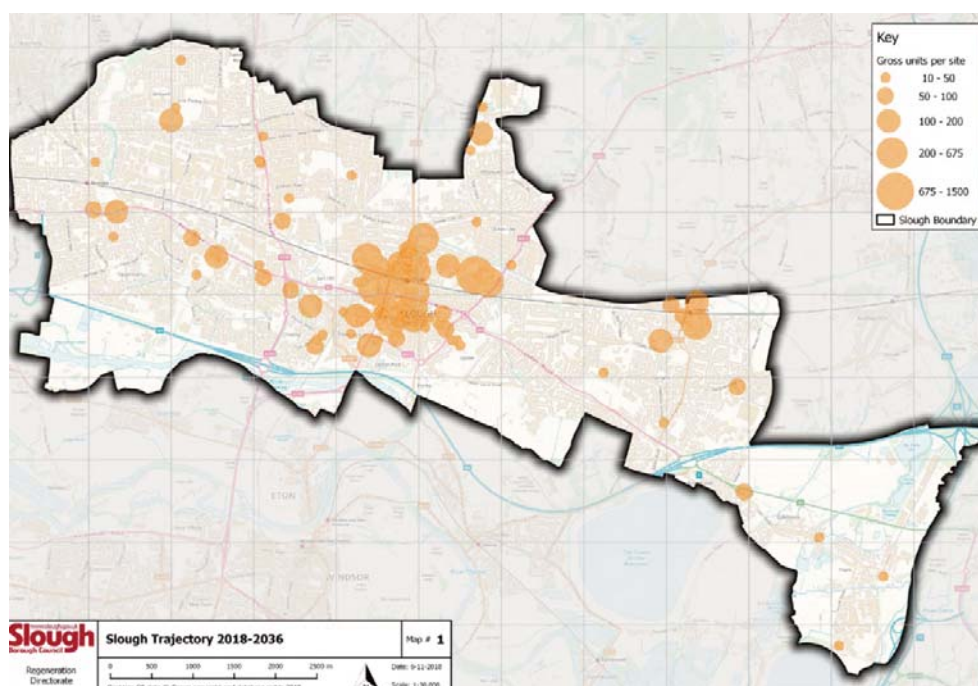
Year	Projected completions
2019/20	608
2020/21	601
2021/22	898
2022/23	1,267

Please note these are just projections and can fluctuate from year to year.

The map below shows that the main areas for housing development in Slough will be concentrated in the central area of the town. There will be approximately 9,000 properties developed in the centre of Slough and the majority of these will be flats.

Slough Borough Council is anticipating that approximately 3,977 properties will be completed over the next 5 years; however the estimated housing need for the future is an average of 900 additional homes per year. The average net completions are 461 per year measured over the last ten years.

Overall it is anticipated there will be an increase of around 20,000 households between 2016 and 2036. There are some very large sites being planned for but are not expected to be completed for some years. These developments will fall into the following CCAs Yew Tree Road, Elliman Avenue, Wexham Road and Romsey Close.



Forecast housing completions 2019-2025 By Children Centre Areas

Slough Children Centre Areas	19/20	20/21	21/22	22/23	23/24	24/25	Total
Chalvey Grove	55	96	269	304	176	60	960
Elliman Avenue	13	45	174	259	200	400	1,091
Monksfield Way	0	24	0	12	0	0	36
Orchard Avenue	0	41	0	60	114	0	215
Penn Road	13	35	0	0	0	0	48
Romsey Close	84	0	10	182	60	0	336
St. Andrew's Way	69	0	24	14	142	0	249
Vicarage Way	61	43	16	0	0	0	120
Wexham Road	261	95	258	196	168	438	1,416
Yew Tree Road	52	222	147	240	338	577	1,576
	608	601	898	1,267	1,198	1,475	6,047

Over the next six years central Slough will see the highest number of housing developments, followed by the surrounding areas of Wexham, Chalvey and Elliman. Therefore serious consideration should be given to these areas when looking at new early years and childcare provision in the future.

Consideration should also be given to the large housing developments (100 plus residential

developments) and legal agreements made between the local authority and the applicant seeking planning permission, otherwise known as Section 106. A section 106 agreement seek a contribution towards educational developments and helps to support the infrastructure implications of such a large development. The table below outlines the number of residential housing developments by children centre area which may be part of a Section 106 arrangement.

CCA	19_20	20_21	21_22	22_23	23_24	24_25	Total
Chalvey Grove	0	0	194	229	139	60	622
Elliman Avenue	0	0	100	200	200	400	900
Monksfield Way	0	0	0	0	0	0	0
Orchard Avenue	0	0	0	0	0	0	0
Penn Road	0	0	0	0	0	0	0
Romsey Close	0	0	0	122	0	0	122
St Andrews Way	0	0	0	0	0	0	0
Vicarage Way	0	0	0	0	0	0	0
Wexham Road	0	0	120	169	168	420	877
Yew Tree Road	0	0	0	0	150	400	550
	0	0	414	720	657	1,280	3,071

It is often the case that families moving into new housing developments already reside in the borough and new families to Slough move into the vacated properties. This can mean that planning school provision as a result of new housing is not straightforward as pupil growth can be across the town as well as in the area of the development. This can mean that there is a lag before local schools see the full impact of new housing developments. (School Place Strategy 2018-23)

Slough is currently expanding education provision for all sectors so contributions are

always sought from developers. Applications for larger developments may trigger the need for a whole new form of entry to be funded or even a new school. Due to the existing pressure on early years provision across the town Slough may request that accommodation for a nursery is included within most medium and large developments. (School Place Strategy 2018-23)

When consider the overall impact of housing developments on early years and childcare we will use the following figures which exclude the possible Section 106 arrangements.

CCA	19_20	20_21	21_22	22_23	23_24	24_25	Total
Chalvey Grove	55	96	75	75	37	0	338
Elliman Avenue	13	45	74	59	0	0	191
Monksfield Way	0	24	0	12	0	0	36
Orchard Avenue	0	41	0	60	114	0	215
Penn Road	13	35	0	0	0	0	48
Romsey Close	84	0	10	60	60	0	214
St. Andrew's Way	69	0	24	14	142	0	249
Vicarage Way	61	43	16	0	0	0	120
Wexham Road	261	95	138	27	0	18	539
Yew Tree Road	52	222	147	270	188	177	1,056
	608	601	484	577	541	195	3,006

Slough Urban Renewal

Slough Urban Renewal (SUR) is a partnership between *Slough Borough Council* and *Morgan Sindall Investments Limited*. The aim of SUR is to make Slough more desirable as a place to live, work and invest in now and in the future. SUR aims to carefully balance new development to create maximum benefit for residents with minimum impact on the environment.

SUR is about creating iconic buildings, open spaces and connectivity, enhancing and improving local schools, providing high-quality new homes and leisure facilities in Slough. They aim to maximise the local community benefits by supporting local companies and raising skills and training.

SUR is driving regeneration across the town through a broad range of leisure, housing, community and school projects. SUR is delivering the Council's £60 million investment into regenerating leisure facilities across the borough; all with the aim of getting more people, more active, more often.

Projects include:

- Leisure
- Hotel and restaurants
- Residential
- Schools
- Offices

For more information visit: <https://www.slough-thinkingforward.co.uk/>

Slough Regeneration

Slough is going through an epic regeneration with the redevelopment of the town centre, the arrival of *Crossrail*, and developments that will encourage homeownership for local people. Improved transport, within and beyond the borough, is a big part of the transformation. In the next few years, Crossrail will put Slough residents in the City of London in just over half an hour and another new rail link will take them directly to Heathrow in six minutes, bringing the whole world closer. This will make Slough a more attractive place to live and work, encouraging more families to move to Slough, thereby increasing the demand for early years and childcare provision in Slough.

- SUR
- Western rail links to Heathrow
- Housing developments
- Commercial developments
- Town Centre management
- Leisure

<http://www.slough.gov.uk/business/regenerating-slough/>

Heathrow Expansion

The expansion of Heathrow presents both challenges and opportunities for local communities including the developments of the early years and childcare market. It is unknown at this stage if Heathrow expansion will see an increase for the need for early years and childcare provision or a potential decrease. Slough Borough Council is currently working with a number of partner organisations to consider the impact on provision.

“Heathrow currently employs 76,000 people, 16,500 of whom live within five kilometres of the airport. Our Heathrow 2.0 strategy ensures this will continue, with a strong focus on enabling local people to work at the airport”

<https://www.heathrowexpansion.com/sustainability/community/>

The Heathrow expansion has the potential to increase the demand for early years and childcare provision as Slough becomes a more attractive place to live and work. With access links to London and Heathrow becoming easier and quicker more families will look to relocate to the area.

“Western Rail Link to Heathrow (WRLtH) is a new direct rail link between Reading, Slough and Heathrow via Maidenhead and Twyford alternately. It will reduce the journey time between Slough and Heathrow to just seven minutes and offer four trains per hour in each direction, greatly benefitting passengers and the local economy. The short 5.5km rail link will leave the Great Western Mainline between Langley and Iwer before entering a new tunnel to join the existing rail line at Heathrow Terminal 5.”

<http://www.slough.gov.uk/parking-travel-and-roads/western-rail-link-to-heathrow.aspx>



Supply of early years and childcare provision by children's centre area

Monksfield Way Children's Centre Area

The information below looks at the supply of early years and childcare provision in the Monksfield Way Children's Centre Area and considers current population sizes and future residential developments.

Population

Age	Number per CCA
1 year old	152
2 year old	155
3 & 4 year old	325

Number of FEE places for 2, 3 & 4 year olds - (provider audit summer 2019)

Age	Number per CCA
Funded 2 year olds	87
Non funded 2 year olds	65
Universal 3 & 4 year old funded places	323
30 hours extended entitlement	85

Funded Early Education place shortfall

FEE 2 year olds

Throughout the year Slough Borough Council receives seven lists from the Department for Work and Pensions outlining the names and addresses of parents/carers who could potentially meet the criteria for a free 2 year old place. The recent list received in June 2019 highlights that the Monksfield Way CCA could be attracting 38 parents/carers who will meet the criteria for a funded 2 year old place.

According to the latest data collection (provider audit summer 2019) on the total available number of 2 year old places it would seem that there is a surplus of 114 places in this area of Slough.

Universal 3 & 4 year old provision

The October 2019 headcount data reports that 215 four year olds were accessing a reception class in the Monksfield Way CCA. This is 66% of the overall target number of 3 & 4 year olds who could be accessing universal funding at this time.

Therefore if 215 four year olds are accessing a reception place it is likely that 110 children will want to access their universal 3 & 4 year old funding at an early years provision.

Currently 140 children are accessing universal provision in this area and 21% do not live in the MW CCA.

It can therefore be concluded that there is potentially a surplus of 213 places.

30 hours extended entitlement

It is estimated that approximately 1,689 children living in the borough are eligible for a 30 hour funded place during 2019/20.

Using the 30 hour extended entitlement predictions for 2019 we can calculate that the approximate number of children who could be eligible for 30 hours funding within the Monksfield Way CCA is 110.

According to the figures gathered from providers about the number of places available for the extended entitlement (see the table above) it can be concluded that there is currently a potential deficit of 25 places for the extended entitlement in the Monksfield Way CCA.

Taking into account that children in receipt of the extended entitlement will also be in receipt of their universal offer, we have calculated that the total number of surplus 3 & 4 year old funded places (a combination of both the universal and extended entitlements) equates to 188 places.

The table below demonstrates that the Monksfield Way CCA has the following capacity.

Type of formal early years childcare	Number of Providers	Number of Registered Places/Capacity		
Nursery class in a Maintained school	3	229		
Nursery class in an Independent sector setting	0	0		
Day nursery - full or part-time	1	130		
Pre-School/Playgroup	2	108		
Children's Centre Nursery full daycare	1	80		
Maintained Nursery School	0	0		
Registered Childminder	18	46		
Home Childcarer	2	4		
Totals	27	597	Number of 0-4 year olds resident in CCA (NHS February 2017)	Percentage of 0-4 year olds <i>theoretically</i> able to access an early years childcare place
			784	76%

The table above indicates that 76% 0-4 year olds residing in the Monksfield Way CCA should be able to access an early years or childcare place. This is a 1% rise compared to the last calculation in the CSA 2018/19.

	19_20	20_21	21_22	22_23	23_24	24_25	Total
MW	0	24	0	12	0	0	36
	0%	67%	0%	33%	0%	0%	

Residential development

Updated figures for the Monksfield Way Children’s Centre Area shows a gross total of 36 properties that will be developed between 2019-2025.

The table below is a guesstimate of the type of properties that may be developed and calculates the number of early years places that would need developing as a result.

Early Years				
Houses		Houses	mix	Early Years
1	0.09	1	8	0.7
2	0.32	2	7	2.2
3	0.32	3	7	2.2
4+	0.44	4+	0	0
Flats		Flats		
1	0.14	1	7	1
2+	0.23	2+	7	1.6
			Pupils Numbers	7.8

If this formula above is applied in terms of calculating the additional children aged 0-4 years that may be requiring an early years childcare place in the Monksfield Way CCA at the conclusion (and occupation) of the developments listed above - it can be reasonably estimated that the cumulative new housing units could lead to a requirement of approximately 8 early years childcare places in that Children’s Centre Planning Area. It can also be concluded that 5 of these places would be required in the next 2 years.

Out of school places have increased by 60 since 2018/19 CSA

Type of formal childcare	Number of Providers	Number of Registered Places
Registered Childminder	18	52
Home Childcarer	2	4
After School Club	4	131
Breakfast Club	4	116
Holiday Play scheme	3	99
Totals	31	402

Monksfield Way CCA

*There is an overall surplus of 237 places in the Monksfield Way CCA

	Number of places to be developed
Funded 2 year old places	0
Funded 3 & 4 year old universal places	0
Funded 3 & 4 year old extended entitlement places	0
0-4 year old places	0
Total	0

Orchard Avenue Children’s Centre Area

The information below looks at the supply of early years and childcare provision in the Orchard Avenue Children’s Centre Area and considers current population sizes and future residential developments.

Population

Age	Number per CCA
1 year old	219
2 year old	197
3 & 4 year old	477

Number of FEE places for 2, 3 & 4 year olds - (provider audit summer 2019)

Age	Number per CCA
Funded 2 year olds	47
Non funded 2 year olds	79
Universal 3 & 4 year old funded places	243
30 hours extended entitlement	78

Funded Early Education place shortfall

FEE 2 year olds

Throughout the year Slough Borough Council receives seven lists from the Department for Work and Pensions outlining the names and addresses of parents/carers who could potentially meet the criteria for a free 2 year old place. The recent list received in June 2019 highlights that the Orchard Avenue CCA could be attracting 74 parents/carers who will meet the criteria for a funded 2 year old place.

According to the latest data collection (provider audit summer 2019) on the total available number of 2 year old places it would seem that there is a surplus of 52 places in this area of Slough.

Universal 3 & 4 year old provision

The October 2019 headcount data reports that 129 four year olds were accessing a reception class in the Orchard Avenue CCA. This is 27% of the overall target number of 3 & 4 year olds who could be accessing universal funding at this time.

Therefore if 129 four year olds are accessing a reception place it is likely that 348 children will want to access their universal 3 & 4 year old funding at an early years provision.

It can therefore be concluded that there is potentially a deficit of 105 places.

Currently 179 children are accessing universal provision in this area.

30 hours extended entitlement

It is estimated that approximately 1,689 children living in the borough are eligible for a 30 hour funded place during 2019/20.

Using the 30 hour extended entitlement predictions for 2019/20 we can calculate that the approximate number of children who could be eligible for 30 hours funding within the Orchard Avenue CCA is 146.

According to the figures gathered from providers about the number of places available for the extended entitlement (see the table above) it can be concluded that there is currently a potential deficit of 68 places for the extended entitlement in the Orchard Avenue CCA.

Taking into account that children in receipt of the extended entitlement will also be in receipt of their universal offer, we have calculated that the total number of deficit 3 & 4 year old funded places (a combination of both the universal and extended entitlements) equates to 173

The table below demonstrates that the Orchard Avenue CCA has the following capacity.

Type of formal early years childcare	Number of Providers	Number of Registered Places/Capacity		
Nursery class in a Maintained school	2	140		
Nursery class in an Independent sector setting	0	0		
Day nursery - full or part-time	2	272		
Pre-School/Playgroup	1	22		
Children's Centre	1	40		
Maintained Nursery School	0	0		
Registered Childminder	12	41		
Home Childcarer	3	6		
Totals	21	521	Number of 0-4 year olds resident in CCA (NHS February 2017)	Percentage of 0-4 year olds <i>theoretically</i> able to access an early years childcare place
			1,112	47%

The table above indicates that 47% 0-4 year olds residing in the Orchard Avenue CCA should be able to access an early years or childcare place. This is a 9% increase compared to the last calculation in the CSA 2018/19.

	19_20	20_21	21_22	22_23	23_24	24_25	Total
OA	0	41	0	60	114	0	215
	0%	19%	0%	28%	53%	0%	

Residential development

Updated figures for the Orchard Avenue Children's Centre Area shows a gross total of 215 properties that will be developed between 2019-2025.

The table below is a guesstimate of the type of properties that may be developed and calculates the number of early years places that would need developing as a result.

Early Years				
Houses		Houses	mix	Early Years
1	0.09	1	43	3.9
2	0.32	2	43	13.8
3	0.32	3	43	13.8
4+	0.44	4+	0	0
Flats		Flats		
1	0.14	1	43	6
2+	0.23	2+	43	9.9
			Pupils Numbers	47.3

If the above formula was applied in terms of calculating the additional children aged 0-4 years that may be requiring an early years childcare place in the Orchard Avenue CCA at the conclusion (and occupation) of the developments listed above - it can be reasonably estimated that the cumulative new housing units could lead to a requirement of approximately 47 early years childcare places in that Children's Centre Planning Area. It can also be concluded that 8 of these places would be required in the next 2 years.

Type of formal childcare	Number of Providers	Number of Registered Places
Registered Childminder	12	42
Home Childcarer	3	6
After School Club	2	80
Breakfast Club	2	80
Holiday Play scheme	2	31
Totals	21	239

Out of school places have decreased by 32 in the OA CCA since 2018/19

Orchard Avenue CCA

	Number of places to be developed
Funded 2 year old places	0
Funded 3 & 4 year old universal places	105
Funded 3 & 4 year old extended entitlement places	68
0-4 year old places	54
Total	227

St. Andrew's Way Children's Centre Area

The information below looks at the supply of early years and childcare provision in the St. Andrew's Way Children's Centre Area and considers current population sizes and future residential developments.

Population

Age	Number per CCA
1 year old	219
2 year old	220
3 & 4 year old	497

Number of FEE places for 2, 3 & 4 year olds - (provider audit summer 2019)

Age	Number per CCA
Funded 2 year olds	45
Non funded 2 year olds	46
Universal 3 & 4 year old funded places	289
30 hours extended entitlement	97

Funded Early Education place shortfall

FEE 2 year olds

Throughout the year Slough Borough Council receives seven lists from the Department for Work and Pensions outlining the names and addresses of parents/carers who could potentially meet the criteria for a free 2 year old place. The recent list received in June 2019 highlights that the St. Andrew's Way CCA could be attracting 53 parents/carers who will meet the criteria for a funded 2 year old place. According to the latest data collection (provider audit summer 2019) on the total available number of 2 year old places it would seem that there is a surplus of 38 places in this area of Slough.

Universal 3 & 4 year old provision

The October 2019 headcount data reported that 190 four year olds were accessing a reception class in the St Andrews Way CCA. This is 38% of the overall target number of 3 & 4 year olds who could be accessing universal funding at this time.

Therefore if 190 four year olds are accessing a reception place it is likely that 307 children will want to access their universal 3 & 4 year old funding at an early years provision.

It can therefore be concluded that there is potentially a deficit of 18 places.

Currently 188 children are accessing universal provision in this area.

30 hours extended entitlement

It is estimated that approximately 1,689 children living in the borough are eligible for a 30 hour funded place during 2019/20.

Using the 30 hour extended entitlement predictions for 2019/20 we can calculate that the approximate number of children who could be eligible for 30 hours funding within the St Andrews Way CCA is 144.

According to the figures gathered from providers about the number of places available for the extended entitlement (see the table above) it can be concluded that there is currently a potential deficit of 47 places for the extended entitlement in the St Andrews Way CCA.

Taking into account that children in receipt of the extended entitlement will also be in receipt of their universal offer, we have calculated that the total deficit of 3 & 4 year old funded places (a combination of both the universal and extended entitlements) equates to 65 places.

The table below demonstrates that the St. Andrew's Way CCA has the following capacity.

Type of formal early years childcare	Number of Providers	Number of Registered Places/Capacity		
Nursery class in a Maintained school	1	90		
Nursery class in an Independent sector setting	0	0		
Day nursery - full or part-time	0	0		
Pre-School/Playgroup	2	120		
Children's Centre	1	32		
Maintained Nursery School	1	157		
Registered Childminder	29	105		
Home Childcarer	5	10		
Totals	39	514	Number of 0-4 year olds resident in CCA (NHS February 2017)	Percentage of 0-4 year olds <i>theoretically</i> able to access an early years childcare place
			1,155	45%

The table above indicates that 45% 0-4 year olds residing in the St Andrews Way CCA should be able to access an early years or childcare place. This is a 3% increase compared to the last calculation in the CSA 2018/19.

	19_20	20_21	21_22	22_23	23_24	24_25	Total
SA	69	0	24	14	142	0	249
	28%	0%	10%	6%	57%	0%	

Residential development

Updated figures for the St. Andrew's Way Children's Centre Area shows a gross total of 249 properties that will be developed between 2019-2025.

The table below is a guesstimate of the type of properties that may be developed and calculates the number of early years places that would need developing as a result.

Early Years				
Houses		Houses	mix	Early Years
1	0.09	1	50	4.5
2	0.32	2	50	16
3	0.32	3	49	15.7
4+	0.44	4+	0	0
Flats		Flats		
1	0.14	1	50	7
2+	0.23	2+	50	11.5
			Pupils Numbers	54.7

If the above formula was applied in terms of calculating the additional children aged 0-4 years that may be requiring an early years childcare place in the St. Andrew's Way CCA at the conclusion (and occupation) of the developments listed above - it can be reasonably estimated that the cumulative new housing units could lead to a requirement of approximately 55 early years childcare places in that Children's Centre Planning Area. It can also be concluded that 15 of these places would be required in the next 2 years.

Type of formal childcare	Number of Providers	Number of Registered Places
Registered Childminder	29	107
Home Childcarer	5	10
After School Club	2	90
Breakfast Club	2	90
Holiday Play scheme	2	95
Totals	40	392

Out of school places have decreased by 31 in the SA CCA since 2018/19

St. Andrew's Way CCA

	Number of places to be developed
Funded 2 year old places	0
Funded 3 & 4 year old universal places	18
Funded 3 & 4 year old extended entitlement places	47
0-4 year old places	55
Total	120

Chalvey Grove Children's Centre Area

The information below looks at the supply of early years and childcare provision in the Chalvey Grove Children's Centre Area and considers current population sizes and future residential developments.

Population

Age	Number per CCA
1 year old	390
2 year old	377
3 & 4 year old	778

Number of FEE places for 2, 3 & 4 year olds - (provider audit summer 2019)

Age	Number per CCA
Funded 2 year olds	66
Non funded 2 year olds	66
Universal 3 & 4 year old funded places	459
30 hours extended entitlement	131

Funded Early Education place shortfall

FEE 2 year olds

Throughout the year Slough Borough Council receives seven lists from the Department for Work and Pensions outlining the names and addresses of parents/carers who could potentially meet the criteria for a free 2 year old place. The recent list received in June 2019 highlights that the Chalvey Grove CCA could be attracting 124 parents/carers who will meet the criteria for a funded 2 year old place.

According to the latest data collection (provider audit summer 2019) on the total available number of 2 year old places it would seem that there is a deficit of 8 places in this area of Slough.

Universal 3 & 4 year old provision

The October 2019 headcount data reported that 192 four year olds were accessing a reception class in the Chalvey Grove CCA. This is 25% of the overall target number of 3 & 4 year olds who could be accessing universal funding at this time.

Therefore if 192 four year olds are accessing a reception place it is likely that 586 children will want to access their universal 3 & 4 year old funding at an early years provision.

It can therefore be concluded that there is potentially a deficit of 127 places.

Currently 263 children are accessing universal provision in this area.

30 hours extended entitlement

It is estimated that approximately 1,689 children living in the borough are eligible for a 30 hour funded place during 2019/20.

Using the 30 hour extended entitlement predictions for 2019/20 we can calculate that the approximate number of children who could be eligible for 30 hours funding within the Chalvey Grove CCA is 254.

According to the figures gathered from providers about the number of places available for the extended entitlement (see the table above) it can be concluded that there is currently a potential deficit of 123 places for the extended entitlement in the Chalvey Grove CCA.

Taking into account that children in receipt of the extended entitlement will also be in receipt of their universal offer, we have calculated that the total deficit of 3 & 4 year old funded places (a combination of both the universal and extended entitlements) equates to 250 places at 15 hours per week, 38 weeks per year.

The table below demonstrates that the Chalvey Grove CCA has the following capacity.

Type of formal early years childcare	Number of Providers	Number of Registered Places/Capacity		
Nursery class in a Maintained school	2	156		
Nursery class in an Independent sector setting	1	60		
Day nursery - full or part-time	0	0		
Pre-School/Playgroup	3	192		
Children's Centre	1	108		
Maintained Nursery School	1	156		
Registered Childminder	5	14		
Home Childcarer	1	2		
Totals	14	688	Number of 0-4 year olds resident in CCA (NHS February 2017)	Percentage of 0-4 year olds <i>theoretically</i> able to access an early years childcare place
			1,935	36%

The table above indicates that 36% 0-4 year olds residing in the Chalvey Grove CCA should be able to access an early years or childcare place. This is 2% higher compared to the last calculation in the CSA 2018/19.

	19_20	20_21	21_22	22_23	23_24	24_25	Total
CG	55	96	75	75	37	0	338
	16%	28%	22%	22%	11%	0%	

Residential development

Updated figures for the Chalvey Grove Children's Centre Area shows a gross total of 338 properties that will be developed between 2019-2023.

The table below is a guesstimate of the type of properties that may be developed and calculates the number of early years places that would need developing as a result.

Early Years				
Houses		Houses	mix	Early Years
1	0.09	1	68	6.1
2	0.32	2	67	21.4
3	0.32	3	67	21.4
4+	0.44	4+	0	0
Flats		Flats		
1	0.14	1	68	9.5
2+	0.23	2+	68	15.6
			Pupils Numbers	74.2

If the above formula was applied in terms of calculating the additional children aged 0-4 years that may be requiring an early years childcare place in the Chalvey Grove CCA at the conclusion (and occupation) of the developments listed above - it can be reasonably estimated that the cumulative new housing units could lead to a requirement of approximately 74 early years childcare places in that Children's Centre Planning Area. It can also be concluded that 33 of these places would be required in the next 2 years.

Type of formal childcare	Number of Providers	Number of Registered Places
Registered Childminder	5	19
Home Childcarer	1	2
After School Club	1	16
Breakfast Club	2	38
Holiday Play scheme	1	8
Totals	10	83

Out of school places have decreased by 32 in the OA CCA since 2018/19

Chalvey Grove CCA

	Number of places to be developed
Funded 2 year old places	8
Funded 3 & 4 year old universal places	127
Funded 3 & 4 year old extended entitlement places	123
0-4 year old places	74
Total	332

Elliman Avenue Children's Centre Area

The information below looks at the supply of early years and childcare provision in the Elliman Avenue Children's Centre Area and considers current population sizes and future residential developments.

Population

Age	Number per CCA
1 year old	212
2 year old	264
3 & 4 year old	533

Number of FEE places for 2, 3 & 4 year olds - (provider audit summer 2019)

Age	Number per CCA
Funded 2 year olds	53
Non funded 2 year olds	33
Universal 3 & 4 year old funded places	427
30 hours extended entitlement	63

Funded Early Education place shortfall

FEE 2 year olds

Throughout the year Slough Borough Council receives seven lists from the Department for Work and Pensions outlining the names and addresses of parents/carers who could potentially meet the criteria for a free 2 year old place. The recent list received in June 2019 highlights that the Elliman Avenue CCA could be attracting 80 parents/carers who will meet the criteria for a funded 2 year old place.

According to the latest data collection (provider audit summer 2019) on the total available number of 2 year old places it would seem that there is a deficit of 6 places in this area of Slough.

Universal 3 & 4 year old provision

The October 2019 headcount data reported that 205 four year olds were accessing a reception class in the Elliman Avenue CCA. This is 38% of the overall target number of 3 & 4 year olds who could be accessing universal funding at this time.

Therefore if 205 four year olds are accessing a reception place it is likely that 328 children will want to access their universal 3 & 4 year old funding at an early years provision.

It can therefore be concluded that there is potentially a surplus of 99 places.

Currently 261 children are accessing universal provision in this area.

30 hours extended entitlement

It is estimated that approximately 1,689 children living in the borough are eligible for a 30 hour funded place during 2019/20.

Using the 30 hour extended entitlement predictions for 2019/20 we can calculate that the approximate number of children who could be eligible for 30 hours funding within the Elliman Avenue CCA is 175.

According to the figures gathered from providers about the number of places available for the extended entitlement (see the table above) it can be concluded that there is currently a potential deficit of 112 places for the extended entitlement in the Elliman Avenue CCA.

Taking into account that children in receipt of the extended entitlement will also be in receipt of their universal offer, we have calculated that the total deficit of 3 & 4 year old funded places (a combination of both the universal and extended entitlements) equates to 13 places at 15 hours per week, 38 weeks per year.

The table below demonstrates that the Elliman Avenue CCA has the following capacity.

Type of formal early years childcare	Number of Providers	Number of Registered Places/Capacity		
Nursery class in a Maintained school	1	104		
Nursery class in an Independent sector setting	0	0		
Day nursery - full or part-time	1	104		
Pre-School/Playgroup	0	0		
Children's Centre	1	32		
Maintained Nursery School	2	344		
Registered Childminder	2	6		
Home Childcarer	2	4		
Totals	9	594	Number of 0-4 year olds resident in CCA (NHS February 2017)	Percentage of 0-4 year olds <i>theoretically</i> able to access an early years childcare place
			1,221	49%

The table above indicates that 49% 0-4 year olds residing in the Elliman Avenue CCA should be able to access an early years or childcare place. This is a 3% increase compared to the last calculation in the CSA 2018/19.

	19_20	20_21	21_22	22_23	23_24	24_25	Total
EA	13	45	74	59	0	0	191
	6%	24%	39%	31%	0%	0%	

Residential development

Updated figures for the Elliman Avenue Children’s Centre Area shows a gross total of 191 properties that will be developed between 2019-2025.

The table below is a guesstimate of the type of properties that may be developed and calculates the number of early years places that would need developing as a result.

Early Years				
Houses		Houses	mix	Early Years
1	0.09	1	38	3.4
2	0.32	2	38	12.2
3	0.32	3	38	12.2
4+	0.44	4+	0	0
Flats		Flats		
1	0.14	1	39	5.5
2+	0.23	2+	38	8.7
			Pupils Numbers	41.9

If the above formula was applied in terms of calculating the additional children aged 0-4 years that may be requiring an early years childcare place in the Elliman Avenue CCA at the conclusion (and occupation) of the developments listed above - it can be reasonably estimated that the cumulative new housing units could lead to a requirement of approximately 42 early years childcare places in that Children’s Centre Planning Area. It can also be concluded that 13 of these places would be required in the next 2 years.

Type of formal childcare	Number of Providers	Number of Registered Places
Registered Childminder	2	5
Home Childcarer	2	4
After School Club	1	24
Breakfast Club	2	55
Holiday Play scheme	1	30
Totals	8	118

Out of school places have decreased by 3 in the EA CCA since 2018/19

Elliman Avenue CCA

	Number of places to be developed
Funded 2 year old places	6
Funded 3 & 4 year old universal places	0
Funded 3 & 4 year old extended entitlement places	13
0-4 year old places	42
Total	61

Penn Road Children’s Centre Area

The information below looks at the supply of early years and childcare provision in the Penn Road Children’s Centre Area and considers current population sizes and future residential developments.

Population

Age	Number per CCA
1 year old	199
2 year old	212
3 & 4 year old	461

Number of FEE places for 2, 3 & 4 year olds - (provider audit summer 2019)

Age	Number per CCA
Funded 2 year olds	34
Non funded 2 year olds	40
Universal 3 & 4 year old funded places	312
30 hours extended entitlement	46

Funded Early Education place shortfall

FEE 2 year olds

Throughout the year Slough Borough Council receives seven lists from the Department for Work and Pensions outlining the names and addresses of parents/carers who could potentially meet the criteria for a free 2 year old place. The recent list received in June 2019 highlights that the Penn Road CCA could be attracting 85 parents/carers who will meet the criteria for a funded 2 year old place.

According to the latest data collection (provider audit summer 2019) on the total available number of 2 year old places it would seem that there is a deficit of 11 places in this area of Slough.

Universal 3 & 4 year old provision

The October 2019 headcount data reported that 159 four year olds were accessing a reception class in the Penn Road CCA. This is 34% of the overall target number of 3 & 4 year olds who could be accessing universal funding at this time.

Therefore if 159 four year olds are accessing a reception place it is likely that 302 children will want to access their universal 3 & 4 year old funding at an early years provision.

It can therefore be concluded that there is potentially a surplus of 10 places.

Currently 149 children are accessing universal provision in this area.

30 hours extended entitlement

It is estimated that approximately 1,689 children living in the borough are eligible for a 30 hour funded place during 2019/20.

Using the 30 hour extended entitlement predictions for 2019/20 we can calculate that the approximate number of children who could be eligible for 30 hours funding within the Penn Road CCA is 152.

According to the figures gathered from providers about the number of places available for the extended entitlement (see the table above) it can be concluded that there is currently a potential deficit of 106 places for the extended entitlement in the Penn Road CCA.

Taking into account that children in receipt of the extended entitlement will also be in receipt of their universal offer, we have calculated that the total number of deficit 3 & 4 year old funded places (a combination of both the universal and extended entitlements) equates to 96 places.

The table below demonstrates that the Penn Road CCA has the following capacity.

Type of formal early years childcare	Number of Providers	Number of Registered Places/Capacity		
Nursery class in a Maintained school	2	194		
Nursery class in an Independent sector setting	0	0		
Day nursery - full or part-time	0	0		
Pre-School/Playgroup	3	138		
Children's Centre	1	100		
Maintained Nursery School	0	0		
Registered Childminder	5	13		
Home Childcarer	2	4		
Totals	13	449	Number of 0-4 year olds resident in CCA (NHS February 2017)	Percentage of 0-4 year olds <i>theoretically</i> able to access an early years childcare place
			1,071	42%

The table above indicates that 42% 0-4 year olds residing in the Penn Road CCA should be able to access an early years or childcare place. This is a 13% increase compared to the last calculation in the CSA 2018/19.

	19_20	20_21	21_22	22_23	23_24	24_25	Total
PR	13	35	0	0	0	0	48
	27%	73%	0%	0%	0%	0%	

Residential development

Updated figures for the Penn Road Children's Centre Area shows a gross total of 48 properties that will be developed between 2019-2025.

The table below is a guesstimate of the type of properties that may be developed and calculates the number of early years places that would need developing as a result.

Early Years				
Houses		Houses	mix	Early Years
1	0.09	1	10	0.9
2	0.32	2	9	2.9
3	0.32	3	9	2.9
4+	0.44	4+	0	0
Flats		Flats		
1	0.14	1	10	1.4
2+	0.23	2+	10	2.3
			Pupils Numbers	10.4

The above formula was applied in terms of calculating the additional children aged 0-4 years that may be requiring an early years childcare place in the Penn Road CCA at the conclusion (and occupation) of the developments listed above - it can be reasonably estimated that the cumulative new housing units could lead to a requirement of approximately 10 early years childcare places in that Children's Centre Planning Area. It can also be concluded that all 10 of these places would be required in the next 2 years.

Type of formal childcare	Number of Providers	Number of Registered Places
Registered Childminder	5	14
Home Childcarer	2	4
After School Club	2	41
Breakfast Club	3	81
Holiday Play scheme	1	16
Totals	13	156

Out of school places have increased by 57 in the Penn Road CCA since 2018/19

Penn Road CCA

	Number of places to be developed
Funded 2 year old places	11
Funded 3 & 4 year old universal places	0
Funded 3 & 4 year old extended entitlement places	96
0-4 year old places	10
Total	117

Wexham Road Children’s Centre Area

The information below looks at the supply of early years and childcare provision in the Wexham Road Children’s Centre Area and considers current population sizes and future residential developments.

Population

Age	Number per CCA
1 year old	237
2 year old	267
3 & 4 year old	545

Number of FEE places for 2, 3 & 4 year olds - (provider audit summer 2019)

Age	Number per CCA
Funded 2 year olds	88
Non funded 2 year olds	74
Universal 3 & 4 year old funded places	425
30 hours extended entitlement	119

Funded Early Education place shortfall

FEE 2 year olds

Throughout the year Slough Borough Council receives seven lists from the Department for Work and Pensions outlining the names and addresses of parents/carers who could potentially meet the criteria for a free 2 year old place. The recent list received in June 2019 highlights that the Wexham Road CCA could be attracting 88 parents/carers who will meet the criteria for a funded 2 year old place.

According to the latest data collection (provider audit summer 2019) on the total available number of 2 year old places it would seem that there is a surplus of 74 places in this area of Slough.

Universal 3 & 4 year old provision

The October 2019 headcount data reported that 309 four year olds were accessing a reception class in the Wexham Road CCA. This is 57% of the overall target number of 3 & 4 year olds who could be accessing universal funding at this time.

Therefore if 309, 4 year olds are accessing a reception place it is likely that 236 children will want to access their universal 3 & 4 year old funding at an early years provision.

It can therefore be concluded that there is potentially a surplus of 116 places.

Currently 331 children are accessing universal provision in this area.

30 hours extended entitlement

It is estimated that approximately 1,689 children living in the borough are eligible for a 30 hour funded place during 2019/20.

Using the 30 hour extended entitlement predictions for 2019/20 we can calculate that the approximate number of children who could be eligible for 30 hours funding within the Wexham Road CCA is 181.

According to the figures gathered from providers about the number of places available for the extended entitlement (see the table above) it can be concluded that there is currently a potential deficit of 62 places for the extended entitlement in the Wexham Road CCA.

Taking into account that children in receipt of the extended entitlement will also be in receipt of their universal offer, we have calculated that the total number of surplus 3 & 4 year old funded places (a combination of both the universal and extended entitlements) equates to 54 places.

The table below demonstrates that the Wexham Road CCA has the following capacity.

Type of formal early years childcare	Number of Providers	Number of Registered Places/Capacity		
Nursery class in a Maintained school	4	214		
Nursery class in an Independent sector setting	0	0		
Day nursery - full or part-time	3	268		
Pre-School/Playgroup	1	56		
Children's Centre	1	40		
Maintained Nursery School	1	130		
Registered Childminder	9	27		
Home Childcarer	3	6		
Totals	22	741	Number of 0-4 year olds resident in CCA (NHS February 2017)	Percentage of 0-4 year olds <i>theoretically</i> able to access an early years childcare place
			1,286	58%

The table above indicates that 58% 0-4 year olds residing in the Wexham Road CCA should be able to access an early years or childcare place. This is an 18% increase compared to the last calculation in the CSA 2018/19

	19_20	20_21	21_22	22_23	23_24	24_25	Total
WR	261	95	138	27	0	18	539
	48%	18%	26%	5%	0%	3%	

Residential development

Updated figures for the Wexham Road Children’s Centre Area shows a gross total of 539 properties that will be developed between 2019-2025.

The table below is a guesstimate of the type of properties that may be developed and calculates the number of early years places that would need developing as a result.

Early Years				
Houses		Houses	mix	Early Years
1	0.09	1	108	9.7
2	0.32	2	107	34.2
3	0.32	3	107	34.2
4+	0.44	4+		0
Flats		Flats		
1	0.14	1	109	15.3
2+	0.23	2+	108	24.8
			Pupils Numbers	118.3

The above formula is applied in terms of calculating the additional children aged 0-4 years that may be requiring an early years childcare place in the Wexham Road CCA at the conclusion (and occupation) of the developments listed above - it can be reasonably estimated that the cumulative new housing units could lead to a requirement of approximately 118 early years childcare places in that Children’s Centre Planning Area. It can also be concluded that all 78 of these places would be required in the next 2 years.

Type of formal childcare	Number of Providers	Number of Registered Places
Registered Childminder	9	27
Home Childcarer	3	6
After School Club	6	187
Breakfast Club	7	285
Holiday Play scheme	3	102
Totals	28	607

Out of school places have increased by 278 in the Wexham Road CCA since 2018/19

Wexham Road CCA

	Number of places to be developed
Funded 2 year old places	0
Funded 3 & 4 year old universal places	0
Funded 3 & 4 year old extended entitlement places	0
0-4 year old places	0
Total	0

Yew Tree Road Children's Centre Area

The information below looks at the supply of early years and childcare provision in the Yew Tree Road Children's Centre Area and considers current population sizes and future residential developments.

Population

Age	Number per CCA
1 year old	349
2 year old	327
3 & 4 year old	723

Number of FEE places for 2, 3 & 4 year olds - (provider audit summer 2019)

Age	Number per CCA
Funded 2 year olds	54
Non funded 2 year olds	39
Universal 3 & 4 year old funded places	496
30 hours extended entitlement	102

Funded Early Education place shortfall

FEE 2 year olds

Throughout the year Slough Borough Council receives seven lists from the Department for Work and Pensions outlining the names and addresses of parents/carers who could potentially meet the criteria for a free 2 year old place. The recent list received in June 2019 highlights that the Yew Tree Road CCA could be attracting 101 parents/carers who will meet the criteria for a funded 2 year old place.

According to the latest data collection (provider audit summer 2019) on the total available number of 2 year old places it would seem that there is a deficit of 8 places in this area of Slough.

Universal 3 & 4 year old provision

The October 2019 headcount data reported that 204 four year olds were accessing a reception class in the Wexham Road CCA. This is 28% of the overall target number of 3 & 4 year olds who could be accessing universal funding at this time.

Therefore if 204 four year olds are accessing a reception place it is likely that 519 children will want to access their universal 3 & 4 year old funding at an early years provision.

It can therefore be concluded that there is potentially a deficit of 23 places.

Currently 193 children are accessing universal provision in this area.

30 hours extended entitlement

It is estimated that approximately 1,689 children living in the borough are eligible for a 30 hour funded place during 2019/20.

Using the 30 hour extended entitlement predictions for 2019/20 we can calculate that the approximate number of children who could be eligible for 30 hours funding within the Yew Tree Road CCA is 227.

According to the figures gathered from providers about the number of places available for the extended entitlement (see the table above) it can be concluded that there is currently a potential deficit of 125 places for the extended entitlement in the Yew Tree Road CCA.

Taking into account that children in receipt of the extended entitlement will also be in receipt of their universal offer, we have calculated that the total number of 3 & 4 year old funded places (a combination of both the universal and extended entitlements) equates to 83 places.

The table below demonstrates that the Yew Tree Road CCA has the following capacity.

Type of formal early years childcare	Number of Providers	Number of Registered Places/Capacity		
Nursery class in a Maintained school	3	182		
Nursery class in an Independent sector setting	2	236		
Day nursery - full or part-time	2	260		
Pre-School/Playgroup	1	123		
Children's Centre	1	32		
Maintained Nursery School	0	0		
Registered Childminder	14	40		
Home Childcarer	0	0		
Totals	23	873	Number of 0-4 year olds resident in CCA (NHS February 2017)	Percentage of 0-4 year olds <i>theoretically</i> able to access an early years childcare place
			1,748	50%

The table above indicates that 50% 0-4 year olds residing in the Yew Tree Road CCA should be able to access an early years or childcare place. This is 11% increase compared to the last calculation in the CSA 2018/19.

	19_20	20_21	21_22	22_23	23_24	24_25	Total
YT	52	222	147	270	188	177	1,056
	5%	21%	14%	26%	18%	16%	

Residential development

Updated figures for the Yew Tree Road Children's Centre Area shows a gross total of 1,056 properties that will be developed between 2019-2025.

The table below is a guesstimate of the type of properties that may be developed and calculates the number of early years places that would need developing as a result.

Early Years				
Houses		Houses	mix	Early Years
1	0.09	1	211	19
2	0.32	2	211	67.5
3	0.32	3	211	67.5
4+	0.44	4+		0
Flats		Flats		
1	0.14	1	212	29.7
2+	0.23	2+	211	48.5
			Pupils Numbers	232.2

The above formula is applied in terms of calculating the additional children aged 0-4 years that may be requiring an early years childcare place in the Yew Tree Road CCA at the conclusion (and occupation) of the developments listed above - it can be reasonably estimated that the cumulative new housing units could lead to a requirement of approximately 232 early years childcare places in that Children's Centre Planning Area. It can also be concluded that approximately 60 of these places would be required in the next 2 years.

Type of formal childcare	Number of Providers	Number of Registered Places
Registered Childminder	14	44
Home Childcarer	0	0
After School Club	6	189
Breakfast Club	4	387
Holiday Play scheme	4	125
Totals	28	745

Out of school places have decreased by 59 in the Yew Tree Road CCA since 2018/19

Yew Tree Road CCA

	Number of places to be developed
Funded 2 year old places	8
Funded 3 & 4 year old universal places	23
Funded 3 & 4 year old extended entitlement places	125
0-4 year old places	232
Total	388

Romsey Close Children's Centre Area

The information below looks at the supply of early years and childcare provision in the Romsey Close Children's Centre Area and considers current population sizes and future residential developments.

Population

Age	Number per CCA
1 year old	307
2 year old	331
3 & 4 year old	616

Number of FEE places for 2, 3 & 4 year olds - (provider audit summer 2019)

Age	Number per CCA
Funded 2 year olds	109
Non funded 2 year olds	74
Universal 3 & 4 year old funded places	600
30 hours extended entitlement	275

Funded Early Education place shortfall

FEE 2 year olds

Throughout the year Slough Borough Council receives seven lists from the Department for Work and Pensions outlining the names and addresses of parents/carers who could potentially meet the criteria for a free 2 year old place. The recent list received in June 2019 highlights that the Romsey Close CCA could be attracting 64 parents/carers who will meet the criteria for a funded 2 year old place.

According to the latest data collection (provider audit summer 2019) on the total available number of 2 year old places it would seem that there is a surplus of 119 places in this area of Slough.

Universal 3 & 4 year old provision

The October 2019 headcount data reported that 345 four year olds were accessing a reception class in the Romsey Close CCA. This is 56% of the overall target number of 3 & 4 year olds who could be accessing universal funding at this time.

Therefore if 345 four year olds are accessing a reception place it is likely that 271 children will want to access their universal 3 & 4 year old funding at an early years provision.

It can therefore be concluded that there is potentially a surplus of 255 places.

Currently 385 children are accessing universal provision in this area which means 114 children from outside of this CCA are accessing their universal provision in the RC CCA.

30 hours extended entitlement

It is estimated that approximately 1,689 children living in the borough are eligible for a 30 hour funded place during 2019/20.

Using the 30 hour extended entitlement predictions for 2019/20 we can calculate that the approximate number of children who could be eligible for 30 hours funding within the Romsey Close CCA is 209

According to the figures gathered from providers about the number of places available for the extended entitlement (see the table above) it can be concluded that there is currently a potential surplus of 66 places for the extended entitlement in the Romsey Close CCA.

Taking into account that children in receipt of the extended entitlement will also be in receipt of their universal offer, we have calculated that the total number of 3 & 4 year old funded places (a combination of both the universal and extended entitlements) equates to a surplus of 321 places at 15 hours per week, 38 weeks per year.

The table below demonstrates that the Romsey Close CCA has the following capacity.

Type of formal early years childcare	Number of Providers	Number of Registered Places/Capacity		
Nursery class in a Maintained school	5	318		
Nursery class in an Independent sector setting	0	0		
Day nursery - full or part-time	3	718		
Pre-School/Playgroup	0	0		
Children's Centre	1	84		
Maintained Nursery School	0	0		
Registered Childminder	20	50		
Home Childcarer	3	6		
Totals	32	1,176	Number of 0-4 year olds resident in CCA (NHS February 2017)	Percentage of 0-4 year olds <i>theoretically</i> able to access an early years childcare place
			1,561	75%

The table above indicates that 75% 0-4 year olds residing in the Romsey Close CCA should be able to access an early years or childcare place. This is a 19% increase compared to the last calculation in the CSA 2018/19.

	19_20	20_21	21_22	22_23	23_24	24_25	Total
RC	84	0	10	14	60	60	228
	37%	0%	5%	6%	26%	26%	

Residential development

Updated figures for the Romsey Close Children's Centre Area shows a gross total of 214 properties that would be developed between 2019-2025.

The table below is a guesstimate of the type of properties that may be developed and calculates the number of early years places that would need developing as a result.

Early Years				
Houses		Houses	mix	Early Years
1	0.09	1	42	3.8
2	0.32	2	42	13.4
3	0.32	3	42	13.4
4+	0.44	4+		0
Flats		Flats		
1	0.14	1	44	6.2
2+	0.23	2+	44	10.1
			Pupils Numbers	46.9

The above formula is applied in terms of calculating the additional children aged 0-4 years that may be requiring an early years childcare place in the Romsey Close Road CCA at the conclusion (and occupation) of the developments listed above - it can be reasonably estimated that the cumulative new housing units could lead to a requirement of approximately 47 early years childcare places in that Children's Centre Planning Area. It can also be concluded that approximately 18 of these places would be required in the next 2 years.

Type of formal childcare	Number of Providers	Number of Registered Places
Registered Childminder	20	47
Home Childcarer	3	6
After School Club	5	196
Breakfast Club	6	186
Holiday Play scheme	3	86
Totals	37	521

Out of school places have increased by 233 in the Romsey Close CCA since 2018/19

Romsey Close CCA

	Number of places to be developed
Funded 2 year old places	0
Funded 3 & 4 year old universal places	0
Funded 3 & 4 year old extended entitlement places	0
0-4 year old places	0
Total	0*

**Total of 393 surplus places in the Romsey Close CCA could mean that no places are required to be developed overall, however these figures only consider funded places and the take up of childcare in the Romsey Close CCA is high and as such these figures should be treated with caution. During the Autumn Term 2019 providers in the Romsey Close CCA reported that they had none or very limited vacancies for places for children 0-4 years old.*

Vicarage Way Children’s Centre Area

The information below looks at the supply of early years and childcare provision in the Vicarage Way Children’s Centre Area and considers current population sizes and future residential developments.

Population

Age	Number per CCA
1 year old	98
2 year old	99
3 & 4 year old	218

Number of FEE places for 2, 3 & 4 year olds - (provider audit summer 2019)

Age	Number per CCA
Funded 2 year olds	31
Non funded 2 year olds	21
Universal 3 & 4 year old funded places	117
30 hours extended entitlement	30

Funded Early Education place shortfall

FEE 2 year olds

Throughout the year Slough Borough Council receives seven lists from the Department for Work and Pensions outlining the names and addresses of parents/carers who could potentially meet the criteria for a free 2 year old place. The recent list received in June 2019 highlights that the Vicarage Way CCA could be attracting 32 parents/carers who will meet the criteria for a funded 2 year old place.

According to the latest data collection (provider audit summer 2019) on the total available number of 2 year old places it would seem that there is a surplus of 20 places in this area of Slough.

Universal 3 & 4 year old provision

The October 2019 headcount data reported that 38 four year olds were accessing a reception class in the Vicarage Way CCA. This is 17% of the overall target number of 3 & 4 year olds who could be accessing universal funding at this time.

Therefore if 38 four year olds are accessing a reception place it is likely that 180 children will want to access their universal 3 & 4 year old funding at an early years provision.

It can therefore be concluded that there is potentially a deficit of 63 places.

Currently 64 children are accessing universal provision in this area.

30 hours extended entitlement

It is estimated that approximately 1,689 children living in the borough are eligible for a 30 hour funded place during 2019/20.

Using the 30 hour extended entitlement predictions for 2019/20 we can calculate that the approximate number of children who could be eligible for 30 hours funding within the Vicarage Way CCA is 69

According to the figures gathered from providers about the number of places available for the extended entitlement (see the table above) it can be concluded that there is currently a potential deficit of 39 places for the extended entitlement in the Vicarage Way CCA.

Taking into account that children in receipt of the extended entitlement will also be in receipt of their universal offer, we have calculated that the total number of 3 & 4 year old funded places (a combination of both the universal and extended entitlements) equates to a deficit of 102 places.

The table below demonstrates that the Vicarage Way CCA has the following capacity.

Type of formal early years childcare	Number of Providers	Number of Registered Places/Capacity		
Nursery class in a Maintained school	2	74		
Nursery class in an Independent sector setting	0	0		
Day nursery - full or part-time	1	90		
Pre-School/Playgroup	0	0		
Children's Centre	1	32		
Maintained Nursery School	0	0		
Registered Childminder	3	15		
Home Childcarer	3	6		
Totals	10	217	Number of 0-4 year olds resident in CCA (NHS February 2017)	Percentage of 0-4 year olds <i>theoretically</i> able to access an early years childcare place
			513	42%

The table above indicates that 42% 0-4 year olds residing in the Vicarage Way CCA should be able to access an early years or childcare place. This is a 10% increase compared to the last calculation in the CSA 2018/19

	19_20	20_21	21_22	22_23	23_24	24_25	Total
VW	61	43	16	0	0	0	120
	51%	36%	13%	0%	0%	0%	

Residential development

Updated figures for the Vicarage Way Children's Centre Area shows a gross total of 120 properties that would be developed between 2019-2023.

The table below is a guesstimate of the type of properties that may be developed and calculates the number of early years places that would need developing as a result.

Early Years				
Houses		Houses	mix	Early Years
1	0.09	1	24	2.2
2	0.32	2	24	7.7
3	0.32	3	24	7.7
4+	0.44	4+		0
Flats		Flats		
1	0.14	1	24	3.4
2+	0.23	2+	24	5.5
			Pupils Numbers	26.4

The above formula is applied in terms of calculating the additional children aged 0-4 years that may be requiring an early years childcare place in the Vicarage Way CCA at the conclusion (and occupation) of the developments listed above - it can be reasonably estimated that the cumulative new housing units could lead to a requirement of approximately 26 early years childcare places in that Children's Centre Planning Area. It can also be concluded that approximately 23 of these places would be required in the next 2 years.

Type of formal childcare	Number of Providers	Number of Registered Places
Registered Childminder	3	15
Home Childcarer	3	6
After School Club	0	0
Breakfast Club	1	60
Holiday Play scheme	0	0
Totals	7	81

Out of school places have increased by 9 in the Vicarage Way CCA since 2018/19

Vicarage Way CCA

	Number of places to be developed
Funded 2 year old places	0
Funded 3 & 4 year old universal places	43
Funded 3 & 4 year old extended entitlement places	39
0-4 year old places	26
Total	108*

**In the autumn term 2019 the school providers in the Vicarage Way CCA reported that they had many vacancies for 3 & 4 year olds to take up their universal offer. When looking at the close proximity to the Romsey Close CCA and considering the lack of vacancies in this CCA we could consider that parents in the Vicarage Way CCA are traveling into the Romsey Close CCA to access full day care provision.*

Place Development 2019-2025

Conclusion and Action Planning

Children's Centre Area	Funded 2 year olds	Funded 3 & 4 year olds	Funded extended entitlement	0-4 year old childcare places	Total number of places required 2019-25	Projected number of places required in the next 2 years	Risks	Targets
Yew Tree Road (Central ward/ Upton ward)	8	23	125	388	544	60	There is significant risk of insufficient early years funded places. Future housing development in this area also leads to the increased demand on childcare provision for all age groups.	Encourage existing providers to expand provision for two, three and four year olds. Look for further opportunities for new providers in this area to create additional funded and childcare places including encouraging schools to extend their offer. Continue to promote capital funding opportunities to support providers with plans.
Chalvey Grove (Chalvey and Cippenham Meadow wards)	8	127	123	74	332	33	There is a significant risk of insufficient funded early education places in 2019/20 despite being an area of relatively low early years participation rates. Currently there is slight risk that new development may have very low occupancy levels based on current rates.	Increase numbers of two, three and four year olds accessing funded early education by raising awareness with families and partners of the benefits for young children of participation in early education.

Monksfield Way (Britwell ward)	0	0	0	0	0	0	The calculations show that due to housing developments 8 new places would be required over the next 5 years, with 5 places needed within the next 2 years however there is already a surplus of 213 universal 3 & 4 year old funded places which would mitigate this need. There is currently a deficit of 25 extended entitlement places.	Any new development opportunities or changes to current provision should consider market trends and the conversion of universal places to extended entitlement places.
Orchard Avenue (Haymill ward)	0	105	68	54	227	181	There is a surplus of 52 places for 2 year olds and some risk that there is a lack of provision in this area for three and four year olds including universal and extended entitlement places.	Encourage existing providers to expand provision for three and four year olds and consider reducing 2 year old places. Look for further opportunities for new providers in this area to create additional funded and childcare places including encouraging schools to extend their offer. Continue to promote capital funding opportunities to support providers with plans.

St. Andrew's Way (Cippenham Green ward)	0	18	47	55	120	15	There is a surplus of 38 places for 2 year olds and there is some risk that there is a lack of provision in this area for three and four year olds including universal and extended entitlement places. The CSA identifies a lack of full time day care for three and four year olds in this area.	To support providers to work in partnership to understand and meet parental demand in this area. Consider opportunities for new providers in this area and/or support existing providers to review their current offer considering reducing 2 year old places and developing more places for 3 & 4 year olds.
Elliman Avenue (Farnham and Central wards)	6	0	13	42	61	13	There is a surplus of 99 universal places for 3 & 4 year olds and a deficit of 112 extended entitlement places. If universal places were converted to extended entitlement places there would be overall net of 13 places.	To support providers to work in partnership to understand and meet parental demand in this area. Consider opportunities for new providers in this area and/or support existing providers to review their current offer and consider converting universal places to extended entitlement places.

Penn Road (Baylis and Stoke and Farnham wards)	11	0	96	10	177	10	This area is at some risk of not having enough provision for 2 year olds and extended entitlement places. Currently there is a surplus of 10 universal places which could be converted using universal places.	To support providers to work in partnership to understand and meet parental demand in this area. Increase numbers of two, three and four year olds accessing funded early education by raising awareness with families and partners of the benefits for young children of participation in early education. Consider opportunities for new providers in this area and support existing providers to consider developments.
(Central and Wexham Lea wards)Wexham Road	0	0	0	0	0	0	There is a surplus of 74 places for 2 year olds and 116 universal places but a deficit of 62 extended entitlement places. 118 childcare places are required for children 0-4 years however current surplus places could meet this gap.	Providers in this area should consider market trends when reviewing current operational models. Providers may review converting 2 year old and universal places to extended entitlement places.

Romsey Close (Foxborough, Kedermister and Langley St. Mary's wards)	0	0	0	0	0	0	This area has a surplus of 119 places for 2 year olds, 255 universal places and 66 extended entitlement places and a need for 47 childcare places due to housing development, however current surplus places could meet future demand.	Support existing and potential new providers to consider current market trends, the impact of future regeneration plans and review business plans/operational delivery to meet demand. Particularly looking at the needs of families who use childcare provision in this area and who travel into this area to use full day care provision.
Vicarage Way (Colnbrook with Poyle ward)	0	43	39	26	108	23	Current surplus of 20 places for 2 year olds but a deficit for universal and extended entitlement places despite having relatively low participation rates. Local information indicates that more families are looking for full day care, outside the locality.	Continue to support existing providers to review current demand trends and respond accordingly. Consider wider local developments which may impact on future demand e.g. Heathrow expansion
Total	33	316	511	649	1,569	335		

Summary

The 2019/2020 CSA has identified a need to develop 1,452 places which is 105 less places compared to the 2018/19 CSA.

Provision of early education and childcare is vital for the local economy, and for developing stronger communities. The aim of childcare is to ensure parents are supported to be economically active, either in work, or in study or training for work. Early education focuses on the specific

learning needs of very young children, to prepare children for lifelong learning and ensure that they are ready to go to school. Funded early education for 2 year old children aims to reduce levels of inequality and narrow the pre-school educational gap between disadvantaged and other children. The Extended Entitlement (30 hours Childcare) supports parents with reduced childcare costs and therefore supports their working opportunities.

Appendix 1

Number of children in reception classes autumn 2019

CCA	Reception 4 year olds 2019	2019 Total population 3 & 4 years	2019 Total population 3 & 4 years minus 4 year olds in reception class
Monksfield Way	215	325	110
Orchard Avenue	129	477	348
St. Andrew's Way	190	497	307
Chalvey Grove	192	778	586
Elliman Avenue	205	533	328
Penn Road	159	461	302
Wexham Road	309	545	236
Yew Tree Road	204	723	519
Romsey Close	345	616	271
Vicarage Way	38	218	180
	1,986	5,173	3,187

Appendix 2

ONS population projections

The projections take the *revised mid-2016 population estimates*, published on 22 March 2018, as their starting point. The projected local authority populations for each year are calculated by ageing on the population from the previous year, applying local fertility and mortality rates to

calculate the number of projected births and deaths, and then adjusting for migration into and out of each local authority.

ONS derive local authority fertility, mortality and migration assumptions using estimated values from the five years before the base projection year.

	2018	2019	2020	2021	2022
0 years	2,411	2,373	2,330	2,293	2,239
1 years	2,421	2,414	2,378	2,337	2,300
2 years	2,651	2,425	2,419	2,383	2,344
3 years	2,584	2,651	2,433	2,427	2,392
4 years	2,626	2,583	2,645	2,435	2,430
5 years	2,649	2,625	2,583	2,643	2,438
6 years	2,692	2,639	2,614	2,573	2,630
7 years	2,638	2,678	2,625	2,597	2,558
8 years	2,616	2,628	2,670	2,617	2,589
9 years	2,490	2,615	2,628	2,671	2,617
10 years	2,422	2,488	2,610	2,622	2,668
11 years	2,434	2,406	2,468	2,587	2,602
12 years	2,301	2,422	2,397	2,457	2,572
13 years	2,105	2,291	2,410	2,387	2,444
14 years	1,990	2,107	2,290	2,407	2,387
Total	149,890	150,916	151,859	152,723	153,493

<https://www.ons.gov.uk/peoplepopulationandcommunity/populationandmigration/populationprojections/bulletins/subnationalpopulationprojectionsforengland/2016based#nearly-all-local-authorities-are-projected-to-grow-by-mid-2026>

"While the overall populations of all regions in England are projected to increase over the next decade, reasons for these increases vary greatly depending on where you live. For instance, projected population change in London is mainly caused by natural change - the difference between the number of births and deaths - and not migration. This is because London's net inflow of international migrants is offset by a similar number of people moving to other parts of the UK. That contrasts with the North East, where growth is mostly down to migration. What's also clear is that the population is ageing in all regions, with the number of people aged 65 and over growing considerably faster than younger age groups." *Andrew Nash, Population Projections Unit, Office for National Statistics*

ONS Main points

- There were 696,271 live births in England and Wales in 2016, a decrease of 0.2% from 2015.
 - In 2016, the total fertility rate (TFR) decreased to 1.81 children per woman, from 1.82 in 2015.
 - The average age of mothers in 2016 increased to 30.4 years, compared with 30.3 years in 2015.
 - Women aged 40 and over had a higher fertility rate than women aged under 20 for the second time since 1947.
- Over a quarter (28.2%) of live births in 2016 were to mothers born outside the UK, the highest level on record.
 - In 2016, the stillbirth rate decreased to 4.4 per 1,000 total births, the lowest rate since 1992.

Statistician's comment

"The percentage of babies born outside of marriage or civil partnership in 2016 was 48%; of these, two-thirds had parents who lived together. The percentage of births outside of marriage or civil partnership has remained relatively unchanged since 2012, following a notable increase from 5% in the mid-1950s. This increase coincided with cohabitation becoming more common as an alternative to marriage, particularly at younger ages." *Nicola Haines, Vital Statistics Outputs Branch, Office for National Statistics*

<https://www.ons.gov.uk/peoplepopulationandcommunity/birthsdeathsandmarriages/livebirths/bulletins/birthsummarytablesenglandandwales/2016>

<https://www.ons.gov.uk/peoplepopulationandcommunity/birthsdeathsandmarriages/livebirths/datasets/birthsummarytables>

2017

Area of usual residence of mother ¹		Number of live births	Total Fertility Rate (TFR) ²	Number of stillbirths
E08000004	Oldham	3,326	2.17	16
E07000117	Burnley	1,196	2.18	0
E07000120	Hyndburn	1,065	2.13	5
E07000122	Pendle	1,198	2.11	15
E08000032	Bradford	7,639	2.16	43
E08000030	Walsall	3,876	2.11	17
E06000032	Luton	3,432	2.16	13
E06000031	Peterborough	3,072	2.26	11
E09000002	Barking and Dagenham	3,870	2.37	24
E09000015	Harrow	3,695	2.15	21
E06000039	Slough	2,529	2.27	15
E07000207	Elmbridge	1,659	2.16	4

2016

Area of usual residence of mother		Live births	Stillbirths	GFR ¹	TFR ²
E06000008	Blackburn with Darwen	2,156	15	75.7	2.25
E08000004	Oldham	3,327	13	75	2.18
E08000005	Rochdale	3,072	11	73.9	2.16
E07000117	Burnley	1,207	11	75.3	2.19
E08000032	Bradford	7,930	55	75.2	2.21
7000150	Corby	1,004	5	74.4	2.15
E06000032	Luton	3,608	9	78.2	2.18
E06000031	Peterborough	3,076	13	78.4	2.26
E07000073	Harlow	1,303	2	76.2	2.15
E07000201	Forest Heath	1,016	3	83.3	2.31
E09000002	Barking and Dagenham	3,973	19	86.5	2.47
E06000039	Slough	2,628	16	81.4	2.29
E07000207	Elmbridge	1,646	7	73.4	2.23
Source: Office for National Statistics (ONS)				Released:	19-Jul-17

Appendix 3

Child Poverty

A local Child Poverty Needs Assessment (carried out in liaison with statutory partners and service areas during the spring and summer of 2014) found that:

- **Slough has a higher percentage of children living in poverty compared to the national average:** using the relative poverty proxy measure described above, latest government statistics show that 21% of the borough's children aged 0-19 were living in poverty (in February 2014), compared to 20% nationally. This equates to 8,035 children in Slough: 7,075 of whom were under the age of 16 (Source: Public Health England Slough Profile 2014)
- **Child poverty is concentrated in a number of wards:** The highest rates of child poverty are concentrated in the wards of Britwell (28%), Chalvey (26%), Wexham Lea (24%), Baylis and Stoke (23%), Central (23%), Colnbrook and Poyle (22%) and (Foxborough 21%), whilst the wards with the highest number of children living in poverty were Chalvey (815 children), Baylis and Stoke (815 children), Britwell (805 children) and Central (780 children) (based on ward structure pre-2012)

- **More than two thirds of the children living in poverty are part of a lone parent family:** the majority of these families live in the wards of Britwell, Chalvey, Haymill and Cippenham Meadows.

The number of working families experiencing child poverty in on the increase: This is because there is a strong link between access to good quality employment and child poverty (whether this is through unemployment or low wages) and a clear gap between the skills of local people and the jobs available in the local area. This places some families at a considerable disadvantage and has real implications in terms of levels of economic activity and worklessness locally.

<http://www.slough.gov.uk/council/joint-strategic-needs-assessment/children-in-poverty.aspx>

Appendix 4

ESTIMATING ELIGIBILITY FOR 30 HOURS BY LOCAL AUTHORITY

The calculation of eligibility estimates for 30 hours of childcare is not straightforward and relies on **several sources of data**. The number of 3- and 4-year-olds eligible for the additional hours is **estimated** using:

ONS population projections	School Census (SC)/Early Years Census (EYC)	Family Resources Survey (FRS)	Survey of Personal Incomes (SPI)	Annual Population Survey (APS)						
<p>STAGE 1</p> <p>The first stage is to start from the ONS population projections for the number of 3- and 4-year-olds.</p>	<p>STAGE 2</p> <p>The SC/EYC are used to identify the proportion of 4-year-olds attending reception classes, who are then removed from the population as they are not eligible for additional hours.</p>	<p>STAGE 3</p> <p>A national estimate of the eligibility rate is calculated using the FRS to identify the proportion of 3- and 4-year-olds with parents meeting the lower earnings eligibility criteria of 16 times the national minimum wage/national living wage per week.</p>	<p>STAGE 4</p> <p>The SPI is then used to estimate the proportion of the eligible population who earn above £100,000 and these children are removed from the FRS estimate of eligibility.</p>	<p>STAGE 5: LA ESTIMATE</p> <p>The FRS sample size is not sufficient for local authority level analysis and therefore the APS is used to estimate eligibility at sub-national level. The APS does not have reliable information on earnings and there are still some limits due to small sample size, which mean that we can only approximate to the eligible population in each local authority. The proxy used is the number of children aged under 16 where parents are usually working at least 16 hours per week. The proportion of these children in each local authority is then applied to the national eligibility estimate of 390,000 in order to get a figure for the number of 3- and 4-year-olds eligible in each local authority.</p>						
<p>SUMMARY STAGE: NATIONAL ESTIMATE</p> <p>Finally the proportion eligible is applied to the ONS population projections, having removed children who attend reception classes, to give the number of eligible children as 390,000.</p>										
<p>LA ELIGIBILITY AND PROJECT LIMIT</p> <p>DfE bandings for medium and high eligibility are based on the below:</p> <ul style="list-style-type: none"> • medium = all LAs not in top 25% of LAs • high = top 25% of LAs <table border="1"> <thead> <tr> <th>% Eligible</th> <th>Total project bids permitted for LA</th> </tr> </thead> <tbody> <tr> <td>Medium</td> <td>4</td> </tr> <tr> <td>High</td> <td>6</td> </tr> </tbody> </table>					% Eligible	Total project bids permitted for LA	Medium	4	High	6
% Eligible	Total project bids permitted for LA									
Medium	4									
High	6									
<p>Eligibility estimates should be treated as indicative given the reliance on survey data and the uncertainty over future changes in population, employment and earnings. In addition, not all eligible parents are expected to take up the additional hours.</p> <p>Note that take up of the first 15 hours is published annually based on the Early Years Census and School Census. The other data sources are also updated on an annual basis and so estimates based on these are subject to change.</p> <p>Data Sources Family Resources Survey 2012/13 Survey of Personal Incomes 2012-13 Annual Population Survey 2014 ONS population projections 2017-18 (mid-2012 based DfE and OBR adjusted) Early Years Census and School Census January 2015</p>										

Please note: This Presentation may not be reproduced, retransmitted or further distributed to the press or any other person or published, in whole or in part, for any purpose.

Appendix 5

FIS Statistics 1 September 2018 to 31 August 2019

Outreach:

	Activities/Parent & Toddler Groups	Children's Centres & groups	Disability/Additional Needs	Funded Early Learning for 3 & 4 yr olds	Funded Early Learning for 2 yr olds	Health & Well Being	Housing & Homelessness	Money & Benefits	Adult Education	Employment	Parenting Support	Schools	Childcare	Childcare costs	Domestic Abuse	Depression/stress & anxiety	Healthy eating & fitness	FIS leaflet & Misc - please specify	New to Slough	Total Enquiries
Parent Champions	266	144	17	89	170	111	60	69	106	69	67	41	76	1	0	51	68	502	10	1917
Out of area	0	11	0	11	11	0	0	0	0	0	0	0	0	11	0	0	0	11	0	55
Chalvey Grove	30	30	53	38	40	30	0	0	32	0	131	2	30	7	2	12	20	37	8	502
Elliman Avenue	36	14	20	6	15	27	0	2	6	9	25	3	6	8	0	13	14	114	0	318
Monksfield Way	23	91	105	51	61	13	0	0	0	0	13	13	14	61	0	0	33	246	0	724
Orchard Avenue	0	0	0	0	0	0	0	0	0	0	0	0	0	0	0	0	0	0	0	0
St Andrews Way	56	44	42	8	44	83	1	6	2	2	53	11	0	44	0	44	21	217	0	678
Wexham Road	15	9	66	16	18	3	0	0	0	0	17	0	4	13	0	4	12	313	0	490
Penn Road	0	0	44	0	0	10	0	0	0	0	15	0	0	0	0	0	0	39	0	108
Romsey Close	5	10	60	51	56	19	0	2	2	0	20	1	10	55	1	5	15	175	0	502
Vicarage Way	10	7	0	7	7	0	0	0	0	0	0	0	0	7	0	0	0	7	0	45
Yew Tree	80	109	83	85	88	55	0	1	10	9	107	2	16	34	2	10	41	524	2	1258
	521	469	490	362	510	351	61	80	158	89	448	73	156	241	5	139	224	2185	20	6582

FIS website:

Total hits on the website - 256354

Providers supporting Local Offer - 63
(Childminders - 13)

Section	Page views	Unique page views
Childcare	28,773	18,071
Funded Early Education	5,654	4,166

FIS Telephone enquiries by Children's Centre Area:

Enquiry Subject	Chalvey Grove	Elliman Avenue	Monksfield Way	Orchard Avenue	Penn Road	Romsey Close	St Andrews	Vicarage Way	Wexham Road	Yew Tree
Activities	10	7	0	7	2	7	1	0	3	3
Adult Education	1	0	0	2	1	1		0	0	0
Childcare	21	7	11	8	3	19	7	2	16	17
Childcare costs	0	3	2	0	0	0	0	1	3	
Children Centres & groups	6	2	3	3	2	6	2	2	9	6
Disability/Additional Needs	9	3	3		4	4	4	3	2	2
Funded Early Learning 3 & 4 year olds	13	2	2	2	3	7	1	2	3	8
Funded Early Learning for 2 year olds	7	2	2	0	0	3	2	0	0	3
Health	2	0	0	0	0	1	3	1	0	3
Other	8	1	3	2	4	3		1	4	5
Parenting support	0	1	0	0	0	0	0	0	1	1
Quick call - General enquiries	1	1	1	1	1	3	6		3	2
Quick call - SEN team	1	0	0	0	0	0	0	0	0	0
Schools	1	0	0	0	0	0	0	0	3	0
Area Total	80	29	27	25	20	54	26	12	47	50

Combined Area Total	370
Other enquiries, no postcode	918
Email enquiries	717
TOTAL	2,005

Appendix 6

Early Years Foundation Stage Data 2019 EYFS Profile Summer 2019

In 2019 Slough submitted EYFS profile data for 2,338 children
This is a decrease of 18 from 2018 (2018 2,356 children)

Good Level of Development (GLD)

A child achieves a GLD if they attain expected or exceeding in all the prime Early Learning Goals (ELG) and the ELGs in Literacy and Mathematics.

71.8% of children in England achieved a GLD in 2019
74.3% of children in Slough achieved a GLD in 2019

We have a GLD that is 2.5% above the national average

This is an improvement on the 2018 data when 73.6% of Slough children achieved a GLD (2.1% above national)

Slough have further extended their increase by 0.4% above national average

LA ranking for percentage of children achieving a GLD; Slough is ranked 33rd highest LA for GLD in 2019

In 2016 Slough ranked 83rd and has improved every year

Slough's GLD has improved each year since 2013 when it was 49.9%

Gender gap in GLD

This is the difference between boys and girls attainment of a Good Level of Development

The gender gap in Slough has decreased in 2019 but remains at a higher level than the National difference

2018 Slough 13.5% National 13.4%
2019 Slough 13.3% National 12.9%

GLD

Boys	2018 67%	(National 65%)
	2019 68%	(National 65.5%)

Girls	2018 80.5%	(National 78.4%)
	2019 81.3%	(National 78.4%)

Average Total Point score:

2019 Slough 34.1
2019 National 34.6

Gap between all children and lowest 20%:

2019 Slough 30.1%
2019 National 32.4%

Slough Childcare Sufficiency Assessment