

Walking Zones

Better by...



About this activity

Suitable for nursery, primary and secondary school pupils and families. Supports the Geography National Curriculum.

Create a walking zone map of your school's local area to help pupils and their families to plan safer, active travel routes to school.

With your school at the centre, your map should include an area marked out showing everywhere that can be reached within a 5 or 10 minute 'walking zone'.

Pupils can then use the map to show their parents/carers how they can get to and from school on foot, bicycle or scooter. Share your walking zone map with the school community to support park and stride. Or, be more creative in capturing your pupils attention.

What you'll need

- A map of the school's local area (scale 1:5000 recommended).
- Information from your borough council about parking control zones in local area.
- Compass and pens.

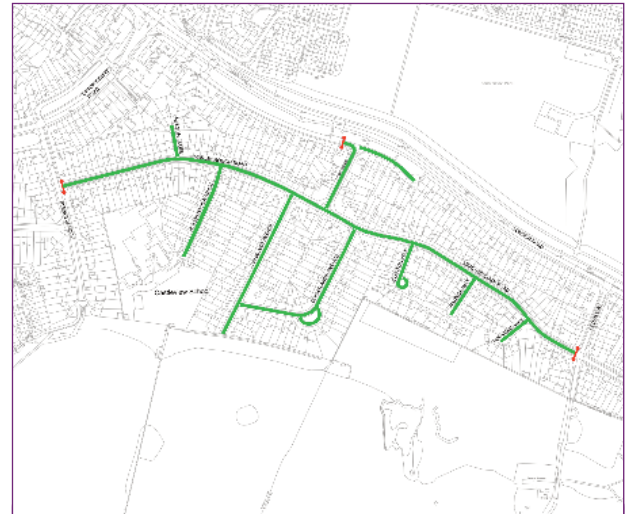
How it helps

This activity counts towards travel activity:

- supports Geography and Maths Curriculum
- eases congestion at school gates
- encourages daily active travel
- improves air quality around schools.

Resource

- Guidance for Walking Zones activity.



Activity steps

- 1. Liaise with the council**
Ask for information regarding restricted parking, and any planned road works you may have to consider.
- 2. Get mapping**
With the help of the walking zone guide (see Resource), create a walking zone map with your pupils.
- 3. Involve the wider community**
Share the walking zone map with your pupils, their parents/carers and the wider school community, promoting it in newsletters, assemblies and on notice boards.
- 4. Check for success**
Are pupils and their parents/carers using the map? Has it changed the way they travel to school or the amount of congestion outside the school gates?
- 5. Tell your story**
Sign to Modeshift STARS to add your story and include pupils' feedback. Explain the activity and add photos and any posters or promotional materials. Feedback to your borough officer.

This activity can count towards your Modeshift STARS accreditation: Travel activity - C16-C18
Supporting: Promotion PR1, PR7,
Curriculum CU1, CU8, Partnership P3

