

Y-VAPE – Youth Vaping cessation and Prevention Evaluation in Slough

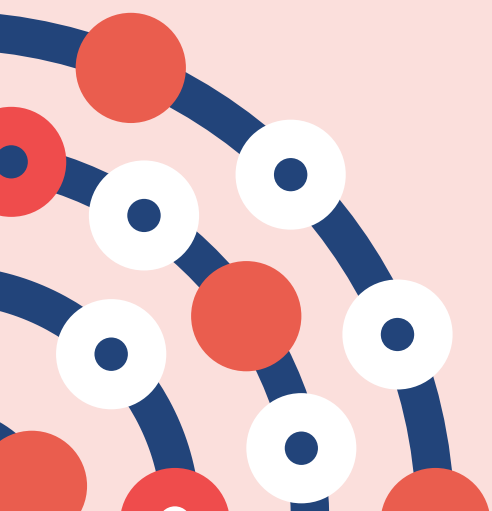


PSHE/RSHE network
26th January 2026



Who are we and why are we here?

- PHIRST Connect - research group funded by the National Institute for Health and Care Research (NIHR)
 - Rapid evaluations of public health interventions at the request of local councils
 - Slough Borough Council wants our help to find out if the youth vaping cessation service is working
- We are currently designing our evaluation
 - Following your involvement in research to inform the service and receiving some of the service (VBA training), we hoped you might be interested in the next step – evaluation!



Why might schools/colleges want to get involved?

- Share your feelings about the service – what works for schools and what doesn't?
- Re-shape the service to be more useful/easy for schools, staff and students
 - Resulting in reduced vaping in your school
- PHIRST Connect can offer the following for involvement but are open to other suggestions!
 - Career talks (we are jobbing academics/researchers/Psychologists)
 - Vouchers or appropriate gifts for children/young people who take part
 - Content for school newsletters
 - Involving 6th Formers as co-researchers
 - Flexibility around data collection times and approaches based on schools' needs/practices/policies

What would involvement look like? (Depending on school preferences)

- A point of contact for the research team
- Confirmation from school that they are happy for team to conduct evaluation
- Preferably, ability for research team to be on school premises to perform data collection activities with:
 - Children/young people who are enrolled in the service
 - Staff who may have received VBA training as part of the service (could also be done online)
 - Possibly access to staff/student school email addresses to send data collection tools (e.g. surveys)
- Space on school premises for research team to perform data collection with students/staff
- Support to gain parental or child/young person consent as applicable (subject to discussion with school about their preferences/policies)

Control schools

- We are also interested in potentially recruiting schools/colleges that are currently NOT hosting the service
- May include talking to their staff and students, but a lighter touch approach for data collection
 - E.g. online staff interviews
 - Focus group/survey with small group of students

What are we asking of you today?

- Are you willing to have an informal conversation with us to talk about how your school/college could be involved and what policies we would need to navigate?
- This does NOT obligate your school to participate!

Please complete the very brief form below/in chat **if you're interested or even if you're not**, to provide us with some additional contextual information that will help us understand Slough schools better!

<https://forms.office.com/e/7JbPWC7Jc6>

Questions?

THANK YOU!

Please feel free to submit more questions to me (Laura Lamming), project lead, on:

L.Lamming@herts.ac.uk