

Early Help in Slough

Family Information Resources Support Team (FIRST)

Edition 1 – September 2018

The Family Information and Resources Support Team (FIRST) is the name given to Slough's Early Help offer, which is aimed at supporting children and families who need additional help. Delivered in partnership, Slough Borough Council and Slough Children's Services Trust coordinate Early Help as well as continuing to deliver the Family Information Service.

FIRST was designed in partnership with a range of stakeholders, focused on getting the right service to children and families at the right time, to prevent children from escalating through the threshold levels. The FIRST team continues to work with partners to evaluate performance and delivery, in order to strengthen its offer.

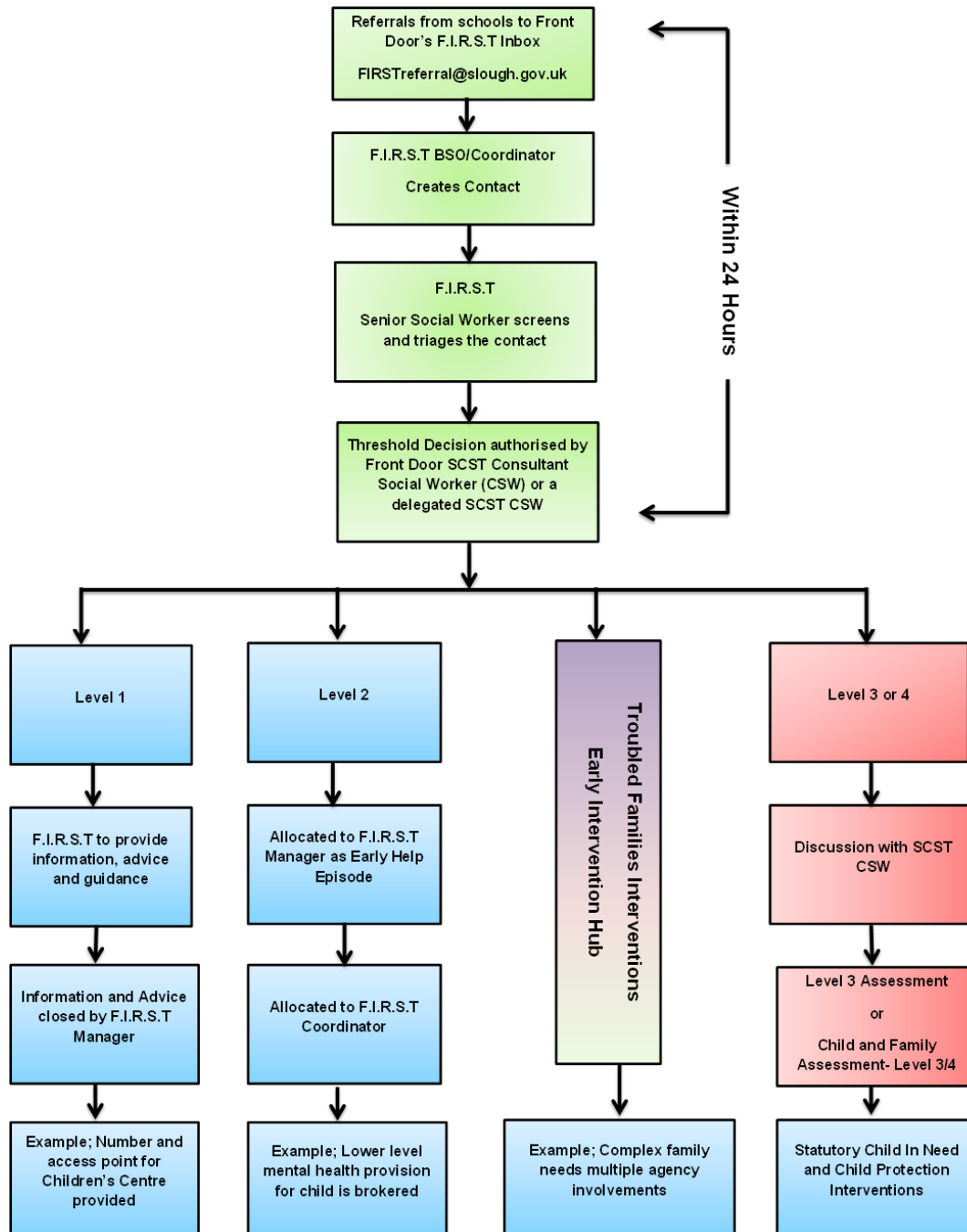
The initial phase of FIRST, launched in June 2018, is available for referrals from local schools in Slough; however, the team also coordinates cases being de-escalated from statutory service involvement. This enables us to capture the whole journey of children and families from when they are first known to children's services and provides the best opportunity to minimise the likelihood of children and families being re-referred or repeatedly referred.

As we move towards Phase 2 of the FIRST implementation, scheduled early next year, we will be extending the support we currently provide to Slough's schools to our wider partners. We know it's important to keep partners up to date, and we will continue to do this via the FIRST newsletter and in other key messages.

WAM – What is it and how does it work?

A Weekly Allocation Meeting (WAM) is a multi agency meeting of Early Help partners. Cases are presented to the Early Help community to ensure we can support the family to get the help and support for their children and family from the right place, at the right time.

FIRST referral pathway for phase 1 - schools



Meet the team

FIRST Co-ordinators are allocated to families to support and co-ordinate Early Help services with our Early Help partners across Slough. We co-ordinate this by regularly meeting with our Early Help partners during the Weekly Allocation Meetings process. This enables FIRST to collectively identify what support children and families may need and the services available across Slough. Support is then co-ordinated by the creation, collective sharing and use of an Early Help action plan which is shared with the family, Lead Professional and all the Early Help agencies involved. Reviews of Early Help services are reviewed at 4 weekly, 6 weekly and 12 weekly intervals. If the case remains open, cases will be reviewed 6 weekly there after until the needs are met in collaboration and with the involvement of the Lead Professional from the Early Help community.



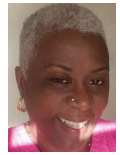
Michael Jarrett – Service Lead Early Years



Sandra Watkins – Interim FIRST Manager



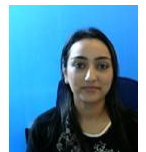
Simon Truelove – Social Work Manager



Carol Taylor – Social Work Manager



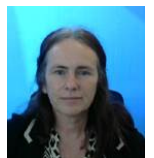
Adriana Lozano – Early Help Co-ordinator



Anum Sher – Early Help Co-ordinator



Rajdeep Chohan – Early Help Co-ordinator



Sharon Hodge – Early Help Co-ordinator



Selina Ward – Early Help Co-ordinator



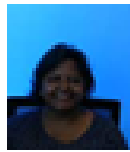
Neesha Mouttou – Website Co-ordinator



Pride Sumbachundu – SENDIASS Co-ordinator



Sarah Wright – SENDIASS Co-ordinator



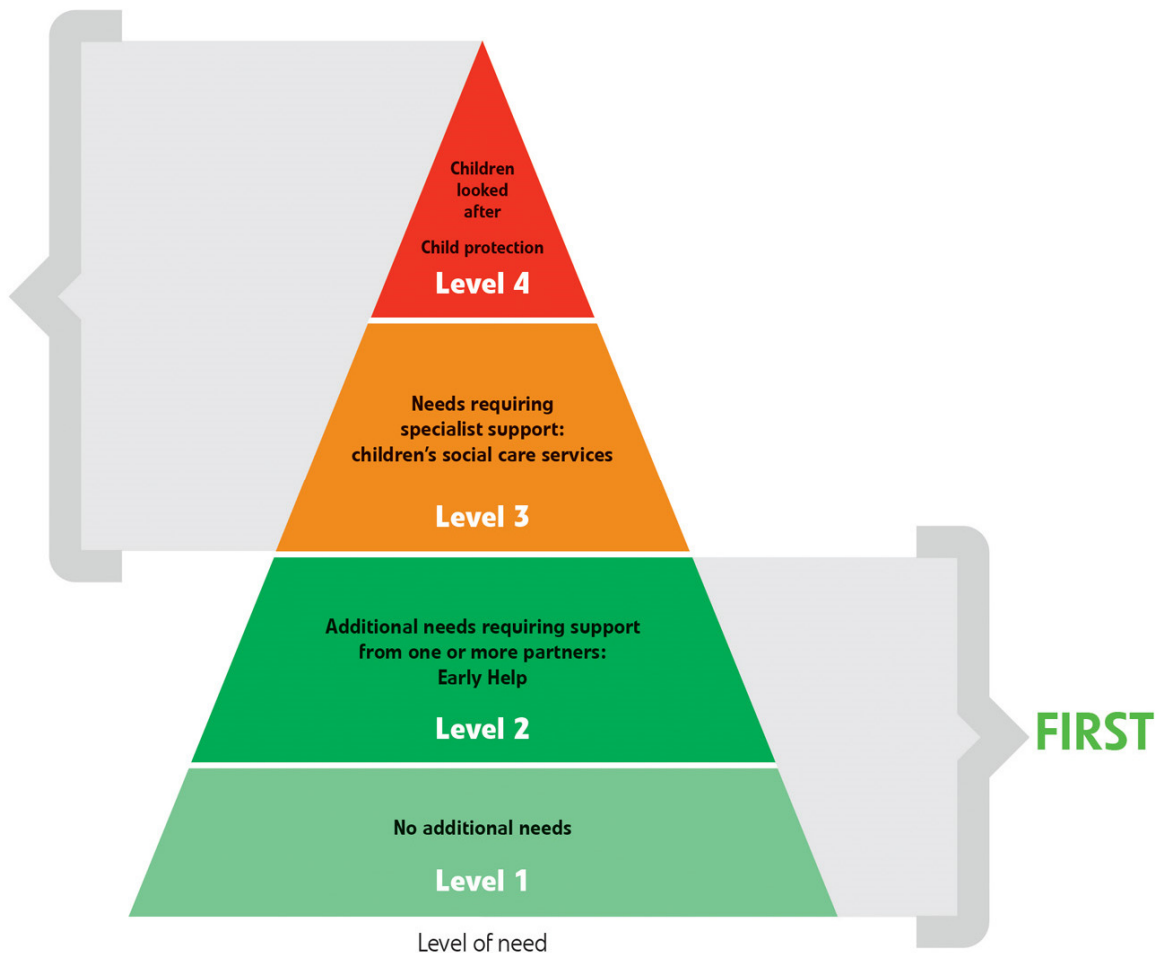
Usha Mistry – Business Support Officer

LSCB threshold guidance: Supporting professional judgement

At what threshold level does FIRST support SCST in meeting the needs of Slough’s children and families?



www.scstrust.co.uk



FIRST have already had a positive impact in terms of putting Early Help into place and improving Slough children's lived experiences.

Case example - We received a referral from a school regarding concerns for an overweight male child aged 9 years whose mother was emotionally unavailable to support him in relation to severe concerns with his weight. FIRST have been able to address the presenting needs of the child's weight, firstly by involving our health partners, Public Health Nursing 4 Slough, who have been able to support the child by enrolling him onto their 'Lets get going' programme addressing childhood obesity and weight loss.

His mother has been referred to Slough's emotional well-being and coaching services to explore her emotional needs which are currently ongoing.

The child was bought a bike by his mother but she could not invest the time to help him learn to ride this due to her own emotional well-being. FIRST supported the child's mother by identifying friends who would be able to teach the child to ride and the child is now able to ride a bike on his own, which is helping him socialise and lose weight, therefore improving his health.

The child himself raised an interest in boxing. FIRST identified a local amateur boxing club and co-ordinated with the child's mother for him to start boxing classes, which his mother has paid for him to do. The child was estranged from his father and was clear that he wanted a relationship with his father. FIRST contacted the child's father and brokered communication between mother and father and the child now has contact with his father which has had a positive impact on the child's emotional wellbeing.

Where can you find FIRST?

You can find us in St Martins Place, 51 Bath Road, Slough, SL1 3UF.

We're on the second floor (west) within the Early Years Service.

"Co-ordinating Early Help and support to Slough's children and families from the right place, at the right time."