

End of Key Stage
Assessment Return

Slough Schools Guidance
2018/19

Applicable to 7.186 onwards

Key Contacts:

All specific enquiries regarding Key Stage assessment data should be directed to:

- **Aman Gill** – Performance Insight Manager,
Performance Team, Slough Borough Council
Tel: 01753 875731 or e-mail: aman.gill@slough.gov.uk
- **Imran Mirza** – Performance Insight Analyst,
Performance Team, Slough Borough Council.
Tel: 01753 875706 or e-mail: imran.mirza@slough.gov.uk

All SIMS related issues should be directed to:

- **Capita SIMS helpdesk** (or your equivalent support provider)
Tel: 0844 8938000 or email: esd@capita.co.uk
Web support: <https://myaccount.capita-cs.co.uk/>

C / Contents

01/ Overview of the End of Key Stage Procedures	1
Introduction	1
What's New in this Release?	2
Assessments for Early Years	3
Assessments at Key Stage 1	4
Assessments at Key Stage 2	4
Assessments at Key Stage 3	4
Measuring Progress	5
Installing the AMPA Resources	5
Checking for Updates to A_Comp Files	6
Completing the End of Key Stage Process Using SIMS Assessment.	7
Where to Find More Information.....	7
02/ Resources Provided for End of Key Stage Assessments .	9
Wizards and Templates.....	9
Wizards.....	9
Templates	10
Early Years Foundation Stage Resources: Reception Baseline Assessments	10
Early Years Foundation Stage Resources: Profiles	10
Years 1 and 2 Resources: Phonics.....	12
Composition of Years 1 and 2: Phonics Screening.....	12
Key Stage 1 Wizard England 2019	13
Contents of the En KS1 Templates 2019 XML File	13
Key Stage 2 Wizard England 2019	14
Contents of the En KS2 Templates 2019 XML File	14
KS1 and 2 Subject Comment Free Test Aspects 2019.....	14
Progress 8 - KS2 Fine Level Template	15
Permissions Required to Run the Wizard Manager.....	15
Importing the Key Stage Wizards into Assessment.....	15
03/ Running the Wizard Manager	19
Introduction	19
Running the Wizard Manager.....	19
Selecting the Key Stage Wizards.....	20
Selecting the Pupil/Student Group	21
Validating the Key Stage Marksheets	23
What are P Scale Validations?.....	27
What are P Scale Templates?.....	27

Previewing and Printing Individual Reports.....	29
Exporting Results Using the Wizard Manager	30
Exporting Results Using the CTF Routine	32
Transferring Key Stage Results to Slough LA	32
04/ Key Stage 1 Teacher Assessments and Tests.....	35
Introduction	35
Key Stage 1: Phonics Screening	35
Contents of the Phonics Wizards.....	36
Contents of the En KS1 Templates 2019 XML File	36
Composition of Key Stage 1 Teacher Assessments.....	37
Key Stage 1 Teacher Assessments and Tests - Grade Sets and Result Sets	38
Key Stage 1 Teacher Assessments and Tests - Aspects.....	38
Marksheet Entry: Key Stage 1 A. Teacher Assessments	39
Marksheet Entry: Key Stage 1 B. P Scale Data Entry	40
Marksheet Entry: Key Stage 1 C. Test Outcomes.....	41
Marksheet Entry: Key Stage 1 D. Broadsheet (Review).....	42
Composition of Key Stage 1 Tests	42
05/ Key Stage 2 Teacher Assessments and Tests.....	45
Introduction	45
Contents of the En KS2 Templates 2019 XML File	45
En KS2 Aspects for 2019.....	46
Composition of Key Stage 2 Teacher Assessments.....	47
Key Stage 2 Teacher Assessments and Tests - Grade Sets and Result Sets	48
Key Stage 2 Teacher Assessments and Tests - Aspects.....	49
Marksheet Entry: Key Stage 2 A. Teacher Assessments 2019	49
Marksheet Entry: Key Stage 2 B. P Scale Data Entry 2019	50
Marksheet Entry: Key Stage 2 C. Test Outcomes 2019.....	51
Marksheet Entry: Key Stage 2 D. Broadsheet Review 2019.....	52
Composition of Key Stage 2 Tests	52
Index	55

01 / Overview of the End of Key Stage Procedures

Introduction	1
What's New in this Release?	2
Assessments for Early Years	3
Assessments at Key Stage 1	4
Assessments at Key Stage 2	4
Assessments at Key Stage 3	4
Measuring Progress	5
Installing the AMPA Resources	5
Checking for Updates to A_Comp Files.....	6
Completing the End of Key Stage Process Using SIMS Assessment..	7
Where to Find More Information.....	7

Introduction

Schools are obliged to assess pupil/students under current regional regulations. Although these regulations are subject to change, the principle remains that pupil/students are tested and/or assessed by their teachers at the end of each Key Stage. These results are then forwarded to external agencies for analysis and aggregation into national statistics.

This guide covers the end of Key Stage procedures common to all the Key Stages in England. Guides to the assessment and reporting arrangements for all the Key Stages can be downloaded from the Department for Education website.

The **Wizard Manager**, which is available in SIMS Assessment, provides an easy way of managing the statutory end of Key Stage procedures. It guides you through each of the following processes:

- selecting the required Key Stage wizard(s)
- selecting the pupil/student group
- entering, editing and validating the results in marksheets
- generating and printing the reports to be sent home to parent/carers
- exporting the results to an XML file.

The Key Stage wizards contain aspects and templates, which the system uses to create the necessary Key Stage marksheets and individual reports. The Key Stage wizards are provided in the Assessment Manager and Performance Analysis Resource Kit (AMPARK). Full details of the files supplied are available (please see *Wizards and Templates* on page 9).

The AMPA folder is installed on each SIMS workstation as part of each release (via SOLUS). When the latest version of AMPA has been downloaded and installed, the various resources (i.e. aspects, templates and wizards) can be imported into SIMS Assessment.

NOTE: All files are imported into the C:\PROGRAM FILES\SIMS\SIMS.NET\AMPA folder (where C: represents the local drive where the SIMS.net folder is held).

When the **Wizard Manager** has been run and the results have been entered, the results can be exported, either from the **Export** page in the **Wizard Manager** or via **Routines | Data Out | CTF | Export CTF**.

IMPORTANT NOTE: Due to the sensitive nature of some of the data stored in SIMS, careful consideration should be given when specifying the location of any folder into which you save sensitive data, e.g. census returns, imported and exported CTFs, etc. You should be mindful of your school's responsibilities with respect to information security. Consider which users have access to the chosen folder, especially if the folder is shared on a server. The DfE recommends ISO27001 as the standard for information security (<http://www.itgovernance.co.uk/iso27001.aspx>). If you are in any doubt, you should consult with your IT Security Officer before proceeding.

What's New in this Release?

A number of enhancements have been incorporated for this release:

Annual Updates to Early Years Foundation Stage Profiles for 2019

Routines | Data In | Assessment | Import

The following resources have been updated for 2019 and are available from the AMPA\England Primary (and Middle Deemed Primary)\Assessment Manager folder:

- EYFS Profile Template 2019.xml
- EYFS Profile Wizard 2019.xml.



More Information:

Early Years Foundation Stage Resources: Reception Baseline Assessments on page 10

Annual Updates to Phonics Resources for 2019

Routines | Data In | Assessment | Import

The following resources have been updated for 2019 and are available from the AMPA\England Primary (and Middle Deemed Primary)\Assessment Manager folder:

- Phonics Screening Templates 2019.xml
- Year 1 Phonics Screening Wizard 2019.xml
- Year 2 Phonics Screening Wizard 2019.xml.



More Information:

Years 1 and 2 Resources: Phonics on page 12

Annual Updates for Key Stages 1 and 2 for 2019

Routines | Data In | Assessment | Import

To address the statutory responsibilities for schools to report end of Key Stage information, Key Stage wizards and templates have been provided to align with official government guidance and assessment reporting arrangements for 2019. These resources are available from the AMPA\England Primary (and Middle Deemed Primary)\Assessment Manager folder:

- Key Stage 1 Wizard England 2019.xml
- Key Stage 2 Wizard England 2019.xml
- EN KS1 Templates 2019.xml
- EN KS2 Templates 2019.xml.



More Information:

Key Stage 1 Wizard England 2019 on page 13

Key Stage 2 Wizard England 2019 on page 14

Assessments for Early Years

The following resources are provided for EYFS baseline assessments:

- EYFS Baseline Assessment Template CEM 2019.xml
- EYFS Baseline Assessment Template EE 2019.xml
- EYFS Baseline Assessment Template NFER 2019.xml.

The Early Years Foundation Stage Profile is collected annually. The following resources are provided for Early Years Foundation Stage assessments:

- EYFS Profile Wizard 2019.xml
- EYFS Profile Template 2019.xml.



More Information:

Early Years Foundation Stage Resources: Reception Baseline Assessments on page 10

Early Years Foundation Stage Resources: Profiles on page 10

Assessments at Key Stage 1

Assessments at Key Stage 1 include tasks and tests that can be performed at any time during Year 2. These can be undertaken informally in the classroom so that the children do not know that they are being assessed and the results form the basis for the Teacher Assessments for English Reading, English Writing, Mathematics and Science. The results of these assessments are reported to the Standards and Testing Agency (STA) as well as to parents.

The Key Stage Assessments also include the Phonics Screening check that is applied to all pupils in Year 1 and Year 2 (for those pupils who did not achieve or did not take the assessment in Year 1).

The following resources are provided for the Phonics Screening assessments:

- Phonics Screening Templates 2019.xml
- Year 1 Phonics Screening Wizard 2019.xml
- Year 2 Phonics Screening Wizard 2019.xml.

The following resources are provided for Key Stage 1 assessments:

- Key Stage 1 Wizard England 2019.xml
- En KS1 Templates 2019.xml.



More Information:

Years 1 and 2 Resources: Phonics on page 12
Key Stage 1 Wizard England 2019 on page 13

Assessments at Key Stage 2

The Key Stage 2 Assessments are designed to determine a pupil/student's knowledge and understanding of various components of the National Curriculum that they have been taught up to the end of Key Stage 2.

English and Mathematics tests are taken at the end of Year 6 when pupil/students are 11 years of age.

Teacher Assessments for English, Science and Mathematics are also conducted at the end of Year 6. The results of these assessments are reported to the Standards and Testing Agency (STA) as well as to parents.

The following resources are provided for Key Stage 2 assessments:

- Key Stage 2 Wizard England 2019.xml
- En KS2 Templates 2019.xml.



More Information:

Key Stage 2 Wizard England 2019 on page 14

Assessments at Key Stage 3

Key Stage 3 extends across the age range between 11-14 and covers the first three years of secondary school. It is no longer statutory to conduct assessments at Key Stage 3.

Measuring Progress

For each National Curriculum subject, there is a programme of study. The programmes of study describe the subject knowledge, skills and understanding that pupil/students are expected to develop during each Key Stage.

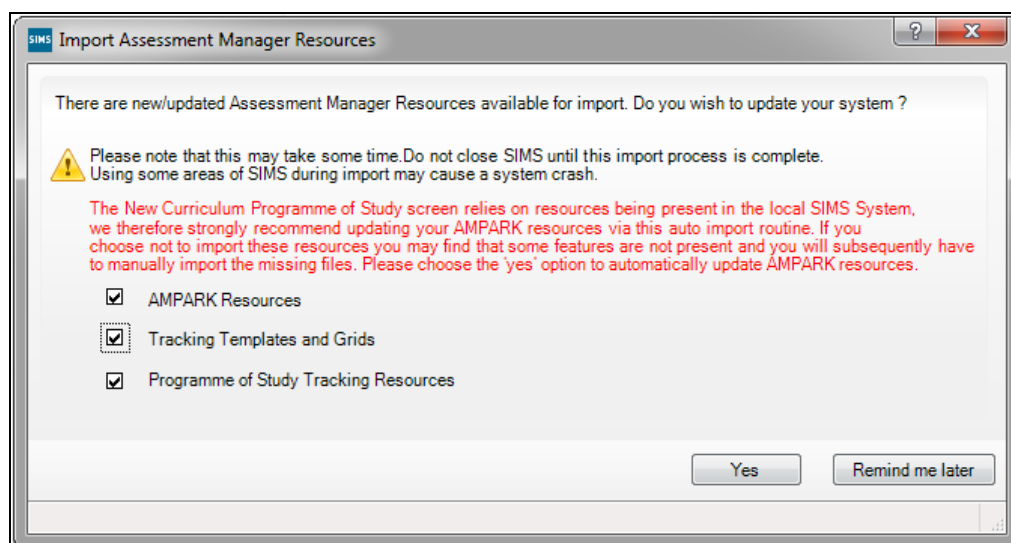
Age in Years	National Curriculum Year	Applicable Key Stage
3	Nursery 1	EYFS
4	Nursery 2	EYFS
4-5	Reception	EYFS
5-6	Year 1	Key Stage 1
6-7	Year 2	Key Stage 1
7-8	Year 3	Key Stage 2
8-9	Year 4	Key Stage 2
9-10	Year 5	Key Stage 2
10-11	Year 6	Key Stage 2
11-12	Year 7	Key Stage 3
12-13	Year 8	Key Stage 3
13-14	Year 9	Key Stage 3
14-15	Year 10	Key Stage 4
15-16	Year 11	Key Stage 4

Installing the AMPA Resources

The Assessment Manager and Performance Analysis resources (AMPA) provide the Key Stage Wizards and other resources required for the End of Key Stage process in SIMS Assessment. The AMPA folder is installed as part of the SIMS release (either by downloading from the My Account website (<https://myaccount.capita-cs.co.uk>) by navigating to **Knowledge Base | AMPARK** documents or by installing via SOLUS).

You can also download and print the latest version of the AMPARK release note from the My Account website (<https://myaccount.capita-cs.co.uk>). The release note contains the details of the most up-to-date resources available for use when managing the statutory end of Key Stage procedures and should be used in conjunction with this handbook.

School users must click the **Yes** button on the **Import Assessment Manager Resources** dialog when prompted to import the new and updated SIMS Assessment resources.



If you click the **Remind me later** button, you will continue to be presented with the **Import Assessment Manager Resources** dialog each time you access SIMS until the new resources have been imported. The **No** button has been removed from the **Import Assessment Manager Resources** dialog to ensure that the new resources are imported as soon as possible.

After the AMPA folder has been downloaded or updated from the My Account website (<https://myaccount.capita-cs.co.uk>), you need to import the resources into SIMS Assessment.

Any additional versions of AMPA are made available for download. These resources are available from the My Account website (<https://myaccount.capita-cs.co.uk>) by navigating to **Knowledge Base | AMPARK** documents.

IMPORTANT NOTE: *The graphics used are for representation purposes only and should not be considered as exact replicas of what is displayed on screen.*

If necessary, the files can be imported directly from the AMPA folder (C:\PROGRAM FILES\SIMS\SIMS .NET\AMPA).

You can now import the resources into SIMS Assessment (please see *Importing the Key Stage Wizards into Assessment* on page 15).

Checking for Updates to A_Comp Files

The English A_Comp file specifies the framework against which the assessment of pupil/student attainment is measured. For each Key Stage or year group, the framework details the subjects and components against which the pupil/students are measured.

You are always advised to check on the DfE website (<https://www.gov.uk/government/organisations/department-for-education>) for any changes to the A_Comp file for the forthcoming academic year.

Completing the End of Key Stage Process Using SIMS Assessment

The steps for completing the End of Key Stage process are as follows.

1. Consider the groups to include in the process and import the Key Stage wizard(s) relevant to the specific groups from the AMPA folder.
2. Select **Tools | Performance | Assessment | Wizard Manager** and select the required Key Stage Wizard(s).
3. Select the Pupil/Student group - the wizard displays the relevant Key Stage marksheets.
4. Open each marksheet to add/edit results.
5. Validate the marksheet entries as required (refer to marksheet notes).
6. Correct any incorrect entries then save and exit the marksheet.
7. Generate, preview and print **Individual Reports**.
8. Export Key Stage Data, if required.

These procedures are described in detail in the following chapters.

Where to Find More Information

Online help can be accessed by pressing **F1** or clicking the applicable **Help** button in SIMS.

A wide range of documentation is available from the SIMS **Documentation Centre**, including handbooks, quick reference sheets and tutorials. Click the **Documentation** button (located on the top right-hand side of the SIMS **Home Page**), select the required category and then select the document you require. Alternatively, use the **Search** facility to locate the required document.

Documentation is also available from the My Account website (<https://myaccount.capita-cs.co.uk>).

1. Enter the required text in the **Search** field to display a list of documents that match the search criteria.
2. To refine the search further, click **Documents** and then select the required **Document type**, **File type** and/or **Date** range (click **Show more** to view additional options, if required).

Alternatively, click **SIMS Publications** (located in the **Popular Searches** list) to display a list of all SIMS publications.

The search results are displayed automatically.

Tips for using the My Account Search Facility

Here are some key tips for using the search facility in My Account. For additional explanations, please refer to the My Account website.

NOTE: You no longer need to use + / - / "" when searching.

- Cut down on the amount of words that you type in the search field and only use key words, e.g. instead of typing pupil showing as a contact search for the word contact.
- Use the **Product Type** filter to refine results further.

01 | Overview of the End of Key Stage Procedures

- Use the advanced filters located on the left-hand side of the **Search results** page.

02/ Resources Provided for End of Key Stage Assessments

Wizards and Templates.....	9
Early Years Foundation Stage Resources: Reception Baseline Assessments.....	10
Early Years Foundation Stage Resources: Profiles	10
Years 1 and 2 Resources: Phonics.....	12
Key Stage 1 Wizard England 2019	13
Key Stage 2 Wizard England 2019	14
Permissions Required to Run the Wizard Manager.....	15
Importing the Key Stage Wizards into Assessment.....	15

Wizards and Templates

The Wizards are the foundation of the SIMS solution for Key Stage results in England. They provide a simple method for users to input and validate End of Key Stage results in preparation for the National Data Collection.

Each Wizard contains all the Aspects, Templates and Reports needed to fulfil the mandatory minimum requirement, as defined by the DfE.

When imported into SIMS Assessment, the Wizards can be used via the **Tools | Performance | Assessment | Wizard Manager** route, where you are guided through the process of creating marksheets, inputting and validating results and generating reports.

Each year the Wizard names are updated with the assessment year (that is the year of the result). The Wizard imports as a new Wizard and does not overwrite the previous years.

The following wizards and templates are available from the AMPA folder. This folder and all the files are located in the C:\Program Files\SIMS\SIMS.net\AMPA folder (where C: represents the local drive where the SIMS .net folder is held).

Wizards

The following wizards are available for 2019:

- EYFS Profile Wizard 2019.xml
- Year 1 Phonics Screening Wizard 2019.xml
- Year 2 Phonics Screening Wizard 2019.xml
- Key Stage 1 Wizard England 2019.xml
- Key Stage 2 Wizard England 2019.xml.

Templates

The template files contain only the marksheet templates specific to each individual data collection. The following templates are available for 2019:

- PoS Tracking Templates England Primary 2015.xml
- Phonics Screening Templates 2019.xml
- En KS1 Templates 2019.xml
- En KS2 Templates 2019.xml

NOTE: The two previous files include a template for recording on-going assessments.

- EYFS Baseline Assessment Template CEM 2019.xml
- EYFS Baseline Assessment Template EE 2019.xml
- EYFS Baseline Assessment Template NFER 2019.xml
- EYFS Profile Template 2019.xml
- QCDA Test Templates KS2 2013.xml
- QCDA Test Templates KS3 2013.xml
- PoS Individual Reports England Secondary.xml
- PoS KS3 Aspects.xml
- Progress 8 - KS2 Fine Level Template.xml.

Early Years Foundation Stage Resources: Reception Baseline Assessments

The DfE provides the facility to carry out a baseline assessment which can be conducted in the Reception year, providing an additional measure of progress being made in Primary schools.

The Standards and Testing Agency (STA) has approved the following three providers:

- Centre for Evaluation and Monitoring, Durham University (CEM) - EYFS Baseline Assessment Template CEM 2019.xml file
- Early Excellence, using Capita partner Learning Ladders (EE) - EYFS Baseline Assessment Template EE 2019.xml file
- National Foundation for Educational Research (NFER) - EYFS Baseline Assessment Template NFER 2019.xml file.

Templates have been provided for each of the three approved providers. Each provider uses different assessment values and the data returned varies accordingly.

Early Years Foundation Stage Resources: Profiles

The Early Years Foundation Stage Profile is collected annually. It must be completed for all pupils in the final term of the Reception year during which the pupil reaches the age of five, before the 30 June.

The EYFS Profile Template 2019.xml file contains the EYFS Profile 2019 Template (with validation).

The EYFS Profile Wizard 2019.xml file contains the following:

- EYFS Profile 2019 Template (with validation)
- EYFS Profile Pupil Report 2019
- EYFS Profile School Report 2019
- EYFS Profile National Report 2019.

There are 17 statutory Profile Aspects or Early Learning Goals to enable the recording of End of Year Assessment results for Reception year pupils. They make up the seven Prime and Specific areas of Learning and Development that pupils must be helped to work towards.

Prime Goals

- **Communication and Language**
 - Listening and Attention
 - Understanding
 - Speaking.
- **Physical Development**
 - Moving and handling
 - Health and Self-care.
- **Personal, Social and Emotional Development**
 - Self-confidence and Self-awareness
 - Managing Feelings and Behaviour
 - Making Relationships.

Specific Goals

- **Literacy**
 - Reading
 - Writing.
- **Mathematics**
 - Numbers
 - Shapes, Space and Measures.
- **Understanding the World**
 - People and Communities
 - The World
 - Technology.
- **Expressive Arts and Design**
 - Exploring and Using Media and Materials
 - Being Imaginative.

For each of these goals, teachers can specify a grade to indicate whether the pupil is:

- 1 - at the emerging level.
- 2 - at the expected level.
- 3 - at the exceeding level.

- A - indicates a pupil who has not been assessed due to long periods of absence, for instance a prolonged illness; a pupil who arrives too late in the summer term for teacher assessment to be carried out, i.e. within two weeks of the data submission date; or a pupil who has an exemption. If any of the 17 Learning Goals is graded with an A, then all should be graded with an A.

Years 1 and 2 Resources: Phonics

The Phonics Screening assessments comprise an annual screening check that is assessed by a teacher. This consists of 40 words, both real and made up, read by each pupil to a teacher. Each word that the pupil pronounces correctly is awarded a single mark and the total mark for this test is 40. The threshold mark is normally 32 out of 40.

Data is collected for all pupils in year 1 and any pupils in year 2 who did not take the test during year 1 or who did not achieve the expected level.

The `Phonics Screening Templates 2019.xml` file contains the two templates for use in Phonics Screening for 2019. One template is for year 1, the other is for year 2.

- Template: Phonics Screening Year 1 2019 (including validation)
- Template: Phonics Screening Year 2 2019 (including validation).

The `Year 1 Phonics Screening Wizard 2019.xml` file contains a marksheet template that can be used to enter data for the year 1 Phonics Screening data collection in 2019. It also contains an individual pupil report and a comparative report that enables comparison between the school's outcome and the National Outcomes from last year.

- Template: Phonics Screening Year 1 2019
- Individual Report: KS1 Y1 Phonics Student Eng 2019
- Individual Report: KS1 Y1 Comparative Eng 2019.

The `Year 2 Phonics Screening Wizard 2019.xml` file contains a marksheet template that can be used to enter data for the year 2 Phonics Screening data collection in 2019. It also contains an individual pupil report and a comparative report that enables comparison between the school's outcome and the National Outcomes from last year.

- Template: Phonics Screening Year 2 2019
- Individual Report: KS1 Y2 Phonics Comparative Eng 2019
- Individual Report: KS1 Y2 Phonics Student Eng 2019.

Composition of Years 1 and 2: Phonics Screening

The following xml files contain the marksheet templates and individual reports needed to manage the Phonics Screening process for schools in England.

Phonics Screening Templates 2019.xml – containing:

- Template: Phonics Screening Year 1 2019 (includes validation)
- Template: Phonics Screening Year 2 2019 (includes validation).

Year 1 Phonics Screening Wizard 2019.xml – containing:

- Template: Phonics Screening Year 1 2019
- Individual Report: KS1 Y1 Phonics Student Eng 2019
- Individual Report: KS1 Y1 Phonics Comparative Eng 2019.

Year 2 Phonics Screening Wizard 2019.xml – containing:

- Template: Phonics Screening Year 2 2019
- Individual Report: KS1 Y2 Phonics Comparative Eng 2019
- Individual Report: KS1 Y2 Phonics Student Eng 2019.

Key Stage 1 Wizard England 2019

This wizard contains all the marksheets, individual reports and all other resources needed to manage the Key Stage 1 process for schools in England.

Contents of the En KS1 Templates 2019 XML File

The following marksheet templates are provided in the En KS1 Templates 2019.xml file:

- **KS1 A. Teacher Assessments 2019**
This marksheet can be used to store the Outcome for the KS1 Reading, Writing, Mathematics and Science Performance Descriptor of the new curriculum (Assessment without Levels) Teacher Assessment from 2016 onwards.
- **KS1 B. P Scale Data Entry 2019**
This marksheet enables you to enter a P Scale assessment for pupils who are working below the standard of the Pre-Key Stage (BLW) in Reading, Writing or Maths or who have not met the expected standard (HNM) in Science.
- **KS1 C. Test Outcomes 2019**
This marksheet can be used to enter results of the new curriculum (Assessment without Levels) tests that supported the Teacher Assessments made as part of the Key Stage 1 arrangements from 2016 onwards.
- **KS1 D. Broadsheet (Review) 2019**
This marksheet can be used to review the Test, Teacher Assessment and P Scale results of the new curriculum (Assessment without Levels) that have been entered in support of the Key Stage 1 arrangements from 2016 onwards.

Key Stage 2 Wizard England 2019

This wizard contains the marksheetworks, individual reports and all other resources needed to manage the Key Stage 2 process for schools in England.

Contents of the En KS2 Templates 2019 XML File

The following marksheet templates are provided in the En KS2 Templates 2019.xml file:

- KS2 A. Teacher Assessments 2019

This marksheet can be used to store the Outcome for the KS2 Reading, Writing, Mathematics and Science Performance Descriptor of the curriculum (Assessment without Levels) Teacher Assessment from 2016 onwards.

NOTE: It is no longer a statutory requirement to record assessments for pupil/students who are working at the expected level or higher in Reading or Maths. Where a pupil/student is working at a pre-Key Stage standard or lower, assessments must still be recorded during 2019. It is still a statutory requirement to record assessments for Writing and Science at all levels.

- KS2 B. P Scale Data Entry 2019

This marksheet enables you to enter a P Scale assessment for pupils who are working below the standard of the Pre-Key Stage (BLW) in Reading, Writing or Maths or who have not met the expected standard (HNM) in Science. For 2019, the associated gradeset for the relevant P Scales has been amended to remove the grades P5, P6, P7 and P8.

- KS2 C. Test Outcomes 2019

This marksheet can be used to enter results of the new curriculum (Assessment without Levels) tests that supported the Teacher Assessments made as part of the Key Stage 2 arrangements from 2016 onwards.

- KS2 D. Broadsheet (Review) 2019

This marksheet can be used to review the Test, Teacher Assessment and P-Scales results of the new curriculum (Assessment without Levels) that have been entered in support of the Key Stage 2 arrangements from 2016 onwards.

KS1 and 2 Subject Comment Free Test Aspects 2019

The following aspects have been made available again in line with DfE requirements for 2019. These comment aspects are not linked to Teacher Assessments or Tests. They have been provided to enable the creation and subsequent transfer of a comment about the pupil's achievements in a given subject.

- EN KS1: English Subject Free Text
- EN KS2: English Subject Free Text
- MA KS1: Maths Subject Free Text
- MA KS2: Maths Subject Free Text

- SC KS1: Science Subject Free Text
- SC KS2: Science Subject Free Text.

Progress 8 - KS2 Fine Level Template

The template called KS2 Average Fine Points Score and Level contained in the `Progress 8 - KS2 Fine Level Template.xml` file includes the following additional aspects:

- KS2: English Fine Level with values of 0-6.99
- KS2: Maths Fine Level with values of 0-6.99.

Permissions Required to Run the Wizard Manager

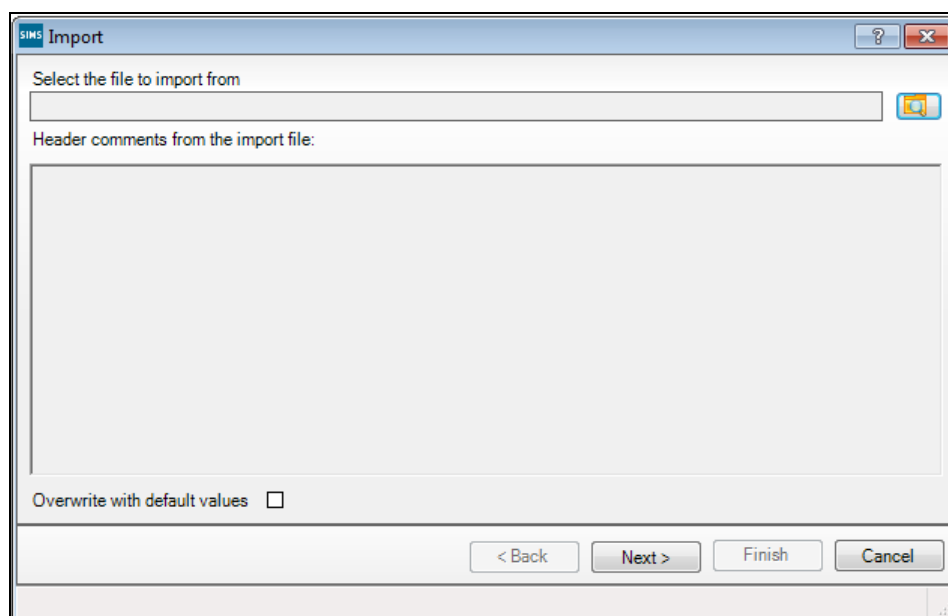
Only members of the Assessment Co-ordinator and Assessment Operator user groups have the necessary permissions to access the **Wizard Manager**.

If a user has been granted the appropriate Permissions, they can access marksheets and individual reports through the marksheet and individual report menu routes.

Importing the Key Stage Wizards into Assessment

Before being able to use the **Wizard Manager** to carry out end of Key Stage processing, you must import the required Key Stage wizard(s) into SIMS Assessment.

1. Select **Routines | Data In | Assessment | Import** to display the first page of the **Import** wizard.

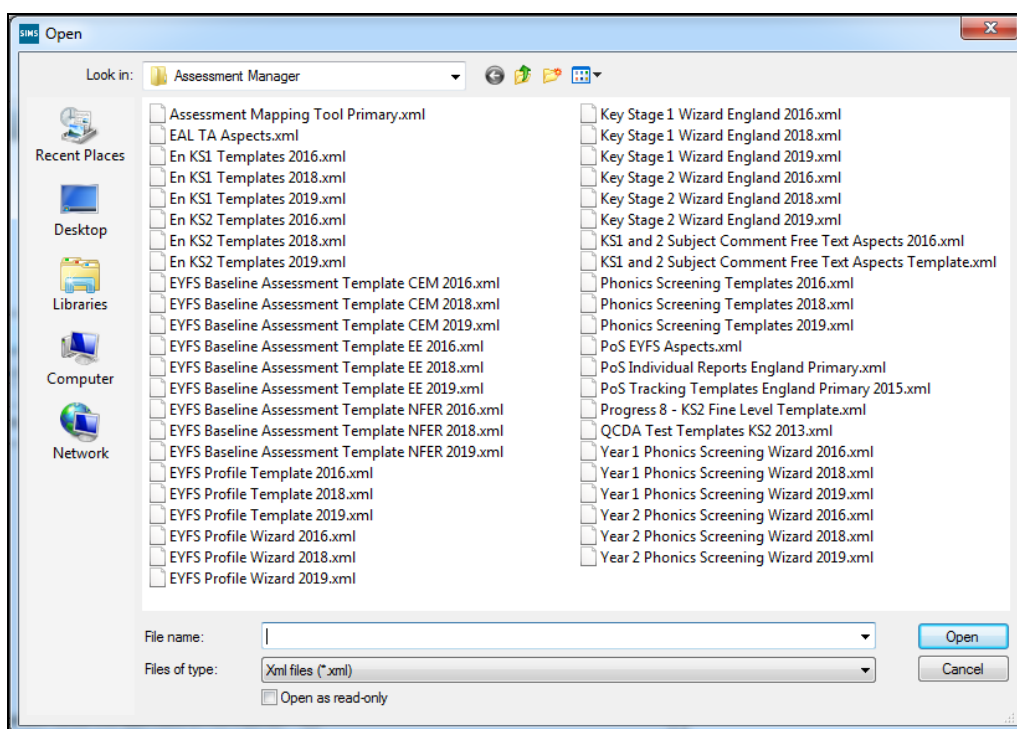


2. Navigate to the AMPA folder and select the file to import by clicking the **Field Browser** button to display the **Open** dialog.

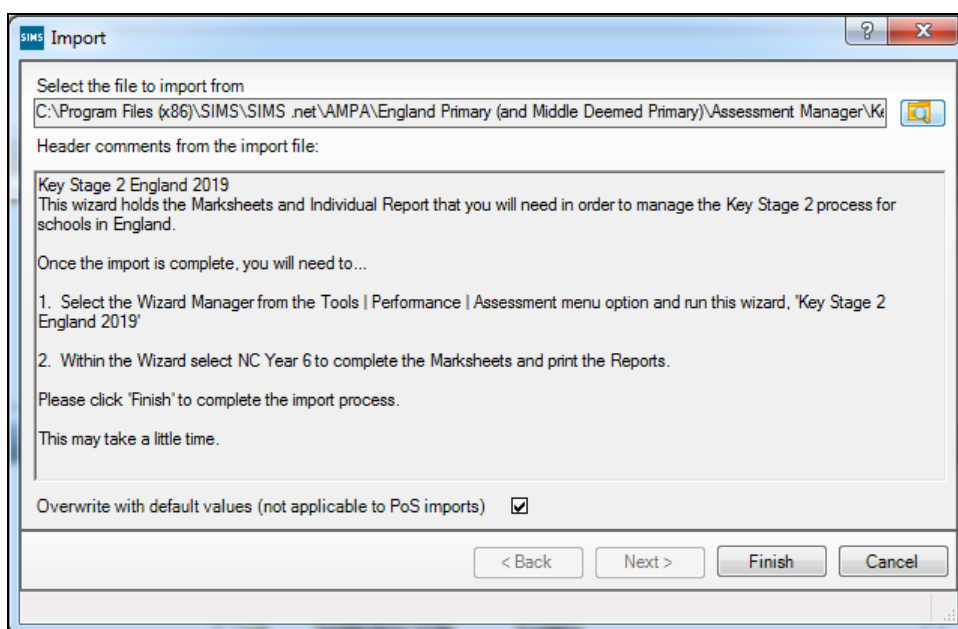


Field Browser button

02| Resources Provided for End of Key Stage Assessments

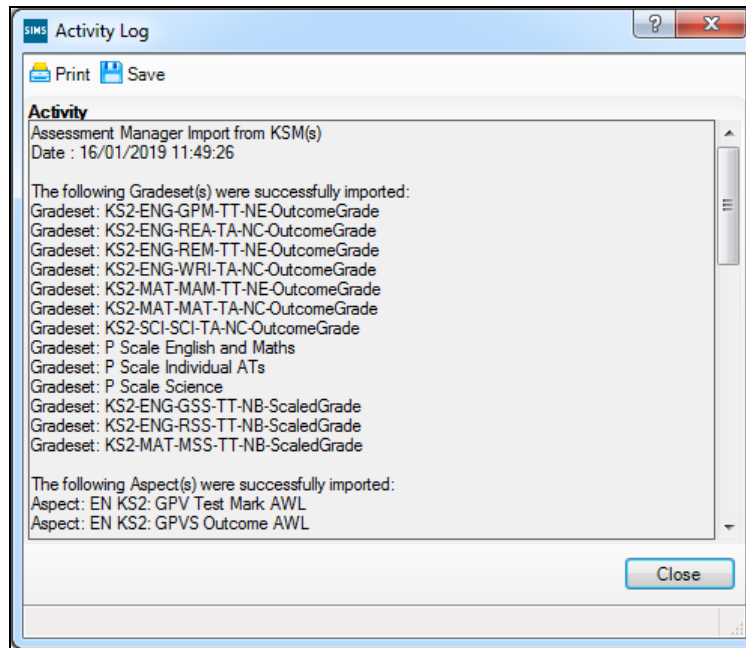


3. Highlight the Key Stage file you wish to import and click the **Open** button to return to the wizard. The name of the selected file is displayed in the **Select the file to import from** field.



4. Click the **Finish** button. A message prompts for confirmation to proceed with the import.
5. Click the **Yes** button to start the import process. This may take some time to complete.

An **Activity Log** is displayed when the import is complete.



The **Wizard Manager** can now be used to complete the End of Key Stage process.

03/ Running the Wizard Manager

Introduction	19
Running the Wizard Manager	19
Exporting Results Using the Wizard Manager	30
Exporting Results Using the CTF Routine	32
Transferring Key Stage Results to your LA.....	32

Introduction

Before running the **Wizard Manager**, you should consider which pupil/student groups' results you will be working on. For example, you might want to include pupil/students who are working out of year. In this case, you would create a user defined group, which would include your choice of pupil/students and supervisors (who might be from more than one year group).

Once created, the user defined group is available anywhere in SIMS Assessment where groups can be selected, e.g. within marksheet creation, report generation, Key Stage Results wizard, etc.

Running the Wizard Manager

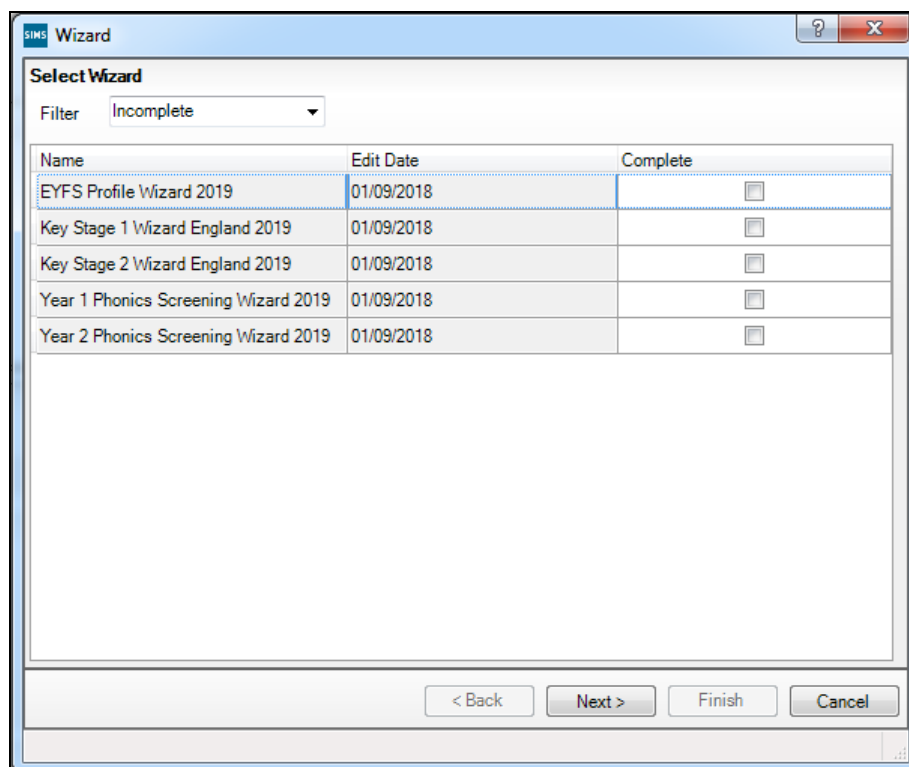
The **Wizard Manager** guides you through the end of Key Stage process, from selecting the relevant Key Stage wizard and pupil/student group, adding, editing and validating the results, through to producing the individual reports and exporting the results.

Before running the **Wizard Manager**, ensure that the required Key Stage wizards have been imported, as described in the previous chapter.

NOTE: The examples used in this section show the process of running the Wizard Manager using the Key Stage 1 wizard. However, the process is the same for all Key Stage wizards.

Selecting the Key Stage Wizards

1. Select **Tools | Performance | Assessment | Wizard Manager** to display the first page of the wizard.



Any Key Stage wizards that have already been imported into SIMS Assessment are displayed. The list can be sorted by clicking the **Name** or **Edit Date** column headings. The **Edit Date** refers to the date the Key Stage wizard was last updated by Capita SIMS.

If the display is empty, ensure that you have successfully imported the required Key Stage wizard(s) (please see *Importing the Key Stage Wizards into Assessment* on page 15).

2. Select **Incomplete**, **Complete** or **All** from the **Filter** drop-down list to filter the Key Stage wizards.

Selecting **Incomplete** filters out any Key Stage wizards that have already been processed through the **Wizard Manager** and are marked as **Complete**.

*NOTE: Once a Key Stage wizard has been processed successfully, select the related **Complete** check box and click the **Next** button. A message informs you that the 'Complete' status has changed and prompts you to save the changes. Click the **Yes** button then click the **Cancel** button to close the **Wizard Manager**.*

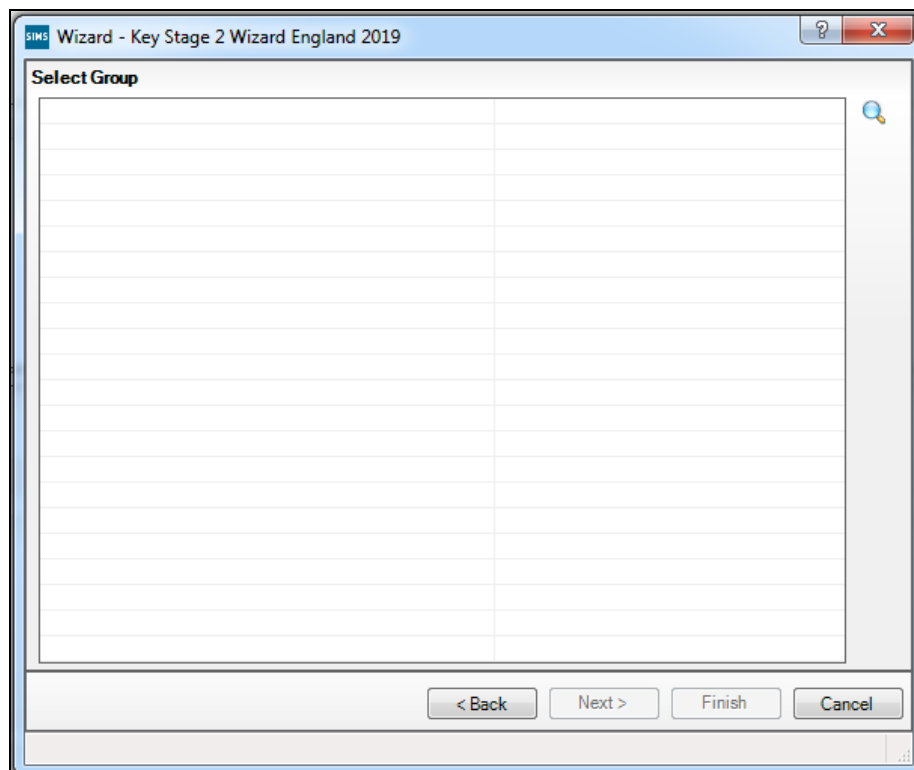
*Each time the wizard is opened, the view defaults to **Incomplete** Key Stage wizards.*

3. Highlight the required Key Stage wizard and click the **Next** button.

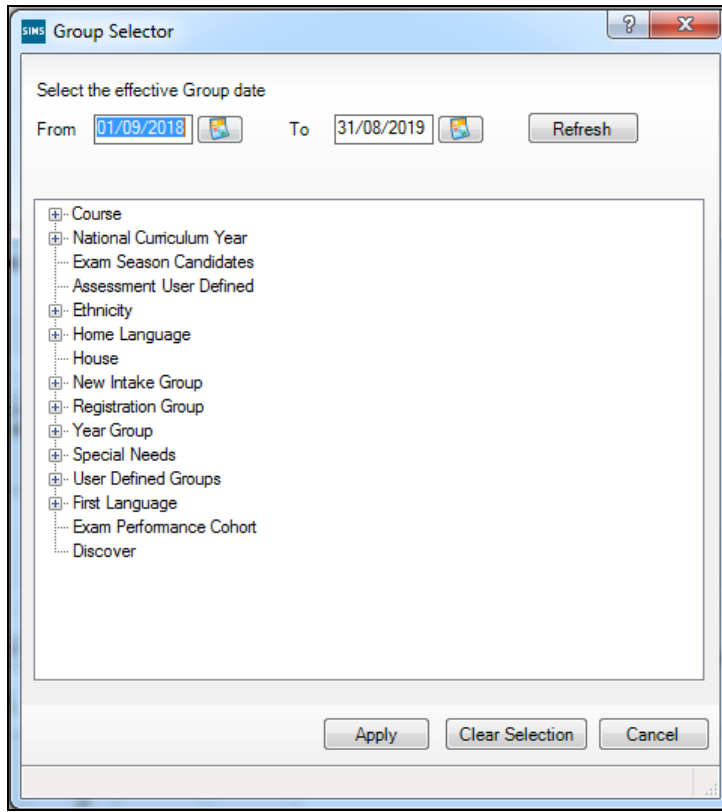
NOTE: Even if only one definition is displayed, it must be highlighted before continuing to the next page of the wizard.

Selecting the Pupil/Student Group

This page of the wizard enables you to select the group that contains the results on which you want to report. It is possible to select any previously created user-defined groups, if required.

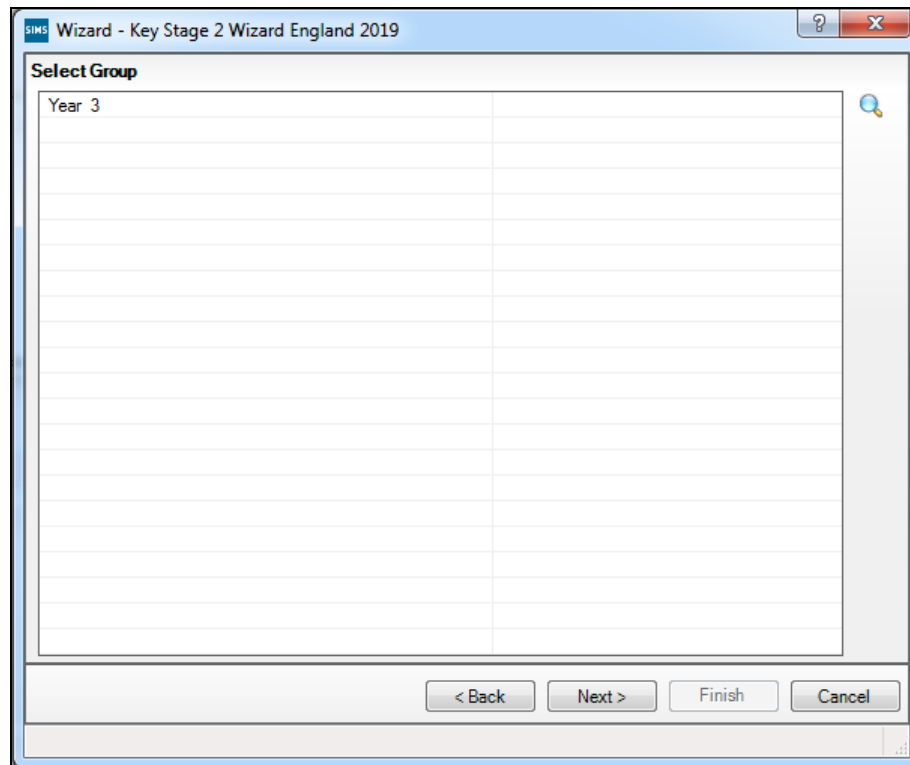


1. Click the **Field Browser** button to display the **Group Selector** dialog.



2. The **From** and **To** dates default to the date range of the current academic year. To change these dates, e.g. to include pupil/students who have already left the school, click the respective **Calendar** button and select an alternative date. Click the **Refresh** button.
3. Click the + or – symbols to expand or contract the groups as necessary. To clear a selection, click the **Clear Selection** button.

4. Highlight the required group and click the **Apply** button to select the group and return to the wizard.

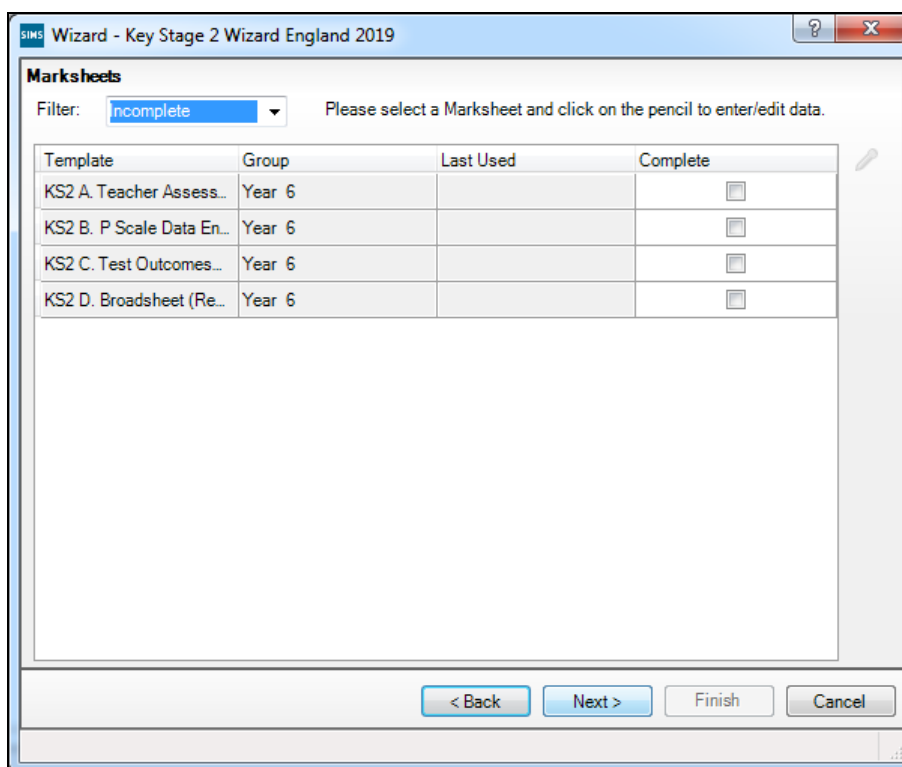


5. Click the **Next** button to display the **Marksheets** page.
6. Click the **Yes** button if you are prompted to save.

Validating the Key Stage Marksheets

The **Marksheets** page of the wizard displays the available marksheets in the imported Key Stage wizard. The marksheets can be sorted on any column by clicking the required column heading.

NOTE: The Teacher Assessments for English, Maths and Science for all Key Stages are collated in one marksheet.



The marksheets can be opened directly from this page to add, edit or validate results. Complete the following steps for each marksheet.

1. Highlight the required marksheet and click the **Edit Marksheet** button.



Edit Marksheet button

Any results previously entered against the aspects are displayed.

The marksheet functionality accessed via the **Wizard Manager** is the same as when accessed via **Focus | Assessment | Marksheet Entry**. However, the display is different in that the marksheet browser and the **Focus | Assessment** menu routes are not available.

IMPORTANT NOTE: Please read the text in the **Notes** field of each marksheet because this offers guidance and information relating to the adding, editing and validating of results in that particular marksheet. Schools are responsible for their own data and must judge entries made on that basis. Any validation discrepancies should be reported to your Local Support Unit.

Marksheet Entry : KS2 B. P Scale Data Entry 2019 : Year 6, Holyoake, Gerald

Save Undo Print Export Calculate

1 Basic Details 2 Marksheet

1 Basic Details

Notes: This Marksheet enables you to enter a P Scale assessment for pupils, at KS2, who are working below the standard of the Pre Key Stage (BLW) in Reading, Writing or Maths or optionally for those who have not met the expected standard (HNM) in Science. To help identify these pupils, existing TA entries are displayed in read-only columns. Please read all the notes below and then follow the five steps:-

Last Used: [] []

Data entry for this Marksheet is complete

2 Marksheet

Result Date: 17/01/2019 Group Membership Date: 17/01/2019 Refresh Summary Narrow Zoom Reveal Freeze Additional

Group Filter: []

Students	English P Scales	KS2 Reading TA Key Stage 2 Validated Result	P Scale: Reading Key Stage 2 Validated Result	KS2 Writing TA Key Stage 2 Validated Result	P Scale: Writing Key Stage 2 Validated Result	P Scale: Speaking Key Stage 2 Validated Result	P Scale: Listening Key Stage 2 Validated Result	P Scale: English Key Stage 2 Validated Result	English P Scales Check!	Mathematics P Scales	KS2 Maths TA Key Stage 2 Validated Result
AKEMAN, Rebecca											
ARKELL, Irene											
ASTONI, Sonya											
ASTWICK, Wills											
BAKER, Fiona											
BARRETT, Anthony											
BASSETT, Joseph											
BENSON, Zachary											
CANDY, Tilly											
CHING, Susie											
CLARKE, Anabel											
CLOVER, Frederick											
COLINS, Stephen											
CURTIS, Leon											
DAVIES, Ben											
DOROTA, Imber											
EDMUNDS, Carl											
GIBBONS, Freya											
HADDON, Connor											
HARRISON, Daniel											
HARRISON, Michael											
JACKSON, Carl											
JENNINGS, Adam											
JONES, Robin											
KHAN, Jahed											

View Select Grade

Select Grade for current cell

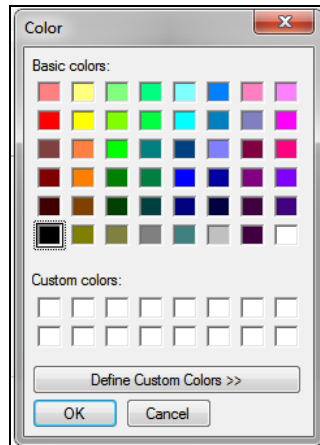
Grade	Description
P4	P4
NOTSEN	

Apply & Next Skip Close

- If there are missing entries or if entries need to be updated, right-click in the required cell and select the appropriate option from the pop-up menu.
- Choose **Select Grade for Cell** to display the **View Select Grade** dialog. Highlight the required **Grade** and click the **Apply & Next** button. This enters the grade in the selected cell and continues to enter the same grade into subsequent cells until you select another grade from the dialog. Click the **Skip** button if you want to miss out the next cell and subsequently return to it to assign a different grade. Click the **Close** button on the **View Select Grade** dialog when you have finished assigning grades to cells on the marksheet.

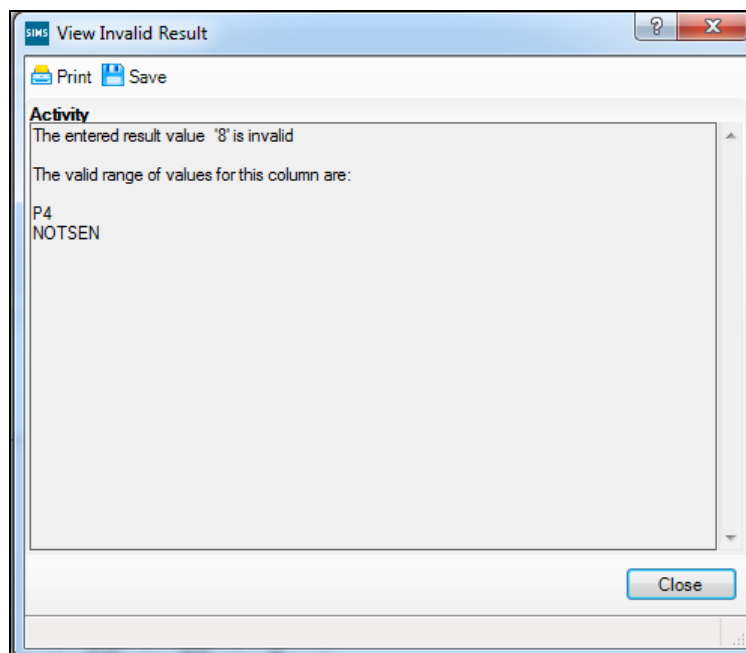
03| Running the Wizard Manager

Alternatively, choose **Select Colour for Cell** to display the **Color** palette dialog and specify a colour for the cell on the marksheet. Click the **OK** button to return to the marksheet.



*NOTE: If the marksheet being viewed requires data to be added, and the teacher who assessed the pupil/students does not have Assessment Co-ordinator or Assessment Operator permissions, they can access the same marksheets via **Focus | Assessment | Marksheet Entry**.*

If an incorrect value is entered, the **View Invalid Result** dialog is displayed, giving details of the valid grades that can be entered into the specific column.



4. Click the **Close** button and correct the required grade.
5. Click the **Save** button to calculate the results and save the marksheet.

If the marksheet contains formula columns for data review, click the **Calculate** button after saving to view the output of those columns (e.g. to see if there are any missing entries). This ensures that correct results are recorded for delivery to your Local Authority (LA).

6. When you have completed the marksheet, select the **Data Entry for this Marksheet is Complete** check box and click the **Save** button again.
7. Click the **Close** button to close the marksheet and return to the **Wizard Manager**.
8. Repeat steps 1-6 for each required marksheet.
9. Click the **Next** button. Click the **Yes** button if you are prompted to save.

NOTE: You should not move on to producing individual reports until you have fully completed the mandatory Key Stage Results marksheets. Once the mandatory Key Stage result marksheets are complete, you should preview and print individual reports (please see Previewing and Printing Individual Reports on page 29).

What are P Scale Validations?

P Scales have changed as a result of the Rochford review and the Key Stage 1 and Key Stage 2 resources have been amended to reflect these changes. Schools should familiarise themselves with the latest available guidance from the DfE.

For full details on how to use the CTF routine please refer to the *Managing Pupil/Students* handbook. All handbooks can be accessed from the **Documentation Centre**, which is launched by clicking the **Documentation** button on the **Home Page** in SIMS. Once open, click the **Handbooks** button, select the required category, then click the required handbook from the **Handbooks** page.

*NOTE: When exporting the results using the CTF routine, ensure that the **Assessment Data** check box is selected and that all other check boxes are deselected in the **Data to be Exported** panel, except in Foundation Stage Profiles, where the **Address** check box must be selected.*

What are P Scale Templates?

The P Scales are a set of criteria or performance descriptions for measuring the progress of pupil/students for whom the early levels of the National Curriculum are not appropriate. P Scale Core marksheets enable you to record information against such pupil/students. These marksheets are created from a set of P Scale templates.

All Key Stages have associated P Scale Core marksheets.

03| Running the Wizard Manager

To open a P Scale marksheet in SIMS, select **Focus | Assessment | Marksheet Entry**, click the **Browse** button and select the required marksheet.

The screenshot displays the 'Marksheet Entry: KS1 B. P Scale Data Entry 2019: Year 2' window. It includes a menu bar (Save, Undo, Print, Export, Calculate) and a 'Basic Details' section with notes and a 'Last Used' field. The 'Marksheet' section shows the 'Result Date' as 16/01/2019 and 'Group Membership Date' as 16/01/2019. A table of student results is visible, with columns for 'Students', 'English P Scales', 'KS1 Reading TA', 'P Scale Reading', 'KS1 Writing TA', 'P Scale Writing', 'P Scale Spelling', 'P Scale Listening', 'P Scale English', 'English P Scales Check', 'Mathematics P Scales', 'KS1 Maths TA', 'P Scale Number', 'P Scale Use Maths', 'P Scale Shape', and 'P Scale Maths'. A 'View Select Grade' dialog box is open, showing a list of grades (P3, P2i, P2, P1i, P1, NOTSEN) and their descriptions.

When this marksheet is saved, or the results are calculated, the validation routine displays a message in the **Validation** column.

Previewing and Printing Individual Reports

This page of the wizard displays the individual report templates from the selected Key Stage wizard and from here the statutory end of Key Stage reports can be printed. Before printing, an individual pupil/student's report can be previewed in Microsoft® Word.

1. Highlight the required **Individual Report Format**.
2. The membership **From** and **To** date fields default to today's date and are used to display the pupil/students who are currently on-roll. To change these dates, e.g. to include pupil/students who have left, directly enter the dates in dd/mm/yyyy format, or click the down arrow adjacent to the required field and select a date from the displayed Calendar.
3. Click the **Refresh** button.

Previewing Key Stage Reports

1. In the **Students** panel, select the check box adjacent to the required pupil/student name (the first pupil/student in the list is selected by default).

2. Click the **Preview Report** button on the right-hand side of the **Individual Report Format** panel to open the selected pupil/student's report in Microsoft® Word.



Preview Report button

3. When you have finished previewing the report, close Microsoft Word to return to the **Wizard Manager**.

NOTE: If P Scale Results are present, they are displayed on the Pupil/Student Report.

Printing Pupil/Student Key Stage Reports

Only the reports for the selected pupil/students are printed. If you have not previewed any reports, the first pupil/student in the list is selected by default.

1. To print the reports for all the pupil/students in the group, click the **Select All** button.

To print only a selection of pupil/students in the group, select the check boxes of the pupil/students whose reports you wish to print.

*TIP: Multiple members of a group can be selected by holding down the **Ctrl** key and clicking each member's name. Sequentially listed members can be highlighted by clicking the first name in the list, holding down the **Shift** key, then clicking the last name in the list.*

2. Click the **Print Report** button to print the selected pupil/student reports.



Print Report button

3. Click the **Next** button to export the results.

Exporting Results Using the Wizard Manager

The **Wizard Manager** can be used to export the results for subsequent forwarding to your LA, if the LA accepts this format.

NOTE: Use the CTF routine to export the results. To do this, click the **Finish** button on the **Wizard Manager** to close the wizard and see **Exporting Results Using the CTF Routine for further information.**

Individual Report Format

Name	Edit Date
KS2 P1 Student England TA 2019	01/09/2018
KS2 P1 Student England TA and TT 2019	01/09/2018
KS2 P2 Comparative England 2019	01/09/2018

Membership Dates for Group : Year 3

From To

Group Filter

Students

	Surname	Forename	DOB	Reg Grp
<input checked="" type="checkbox"/>	Akeman	Richard	02/02/2011	3TO
<input checked="" type="checkbox"/>	Akeman	Steven	02/02/2011	3CB
<input checked="" type="checkbox"/>	Alamilla	Sofia	02/12/2010	3TO
<input checked="" type="checkbox"/>	Balik	Karolina	15/02/2011	3CB
<input checked="" type="checkbox"/>	Banin	Valeriya	22/10/2010	3TO
<input checked="" type="checkbox"/>	Banks	Chloe	04/04/2011	3CB

The **Group Membership Dates** default to the date range of the current academic year. To change these dates, e.g. to export the results for pupil/students who have already left the school, enter them in dd/mm/yyyy format or click the relevant **Calendar** button to select a date.

1. Click the **Refresh** button.
2. Deselect the check boxes adjacent to any pupil/students whose results you do not want to export. If you need to export only one or two from a long list of pupil/students, click the **Deselect All** button and then select the required pupil/students. To select all the pupil/students, click the **Select All** button.

Students

	Surname	Forename	DOB	Reg Grp
<input checked="" type="checkbox"/>	Abdullah	Tamwar	12/01/2009	3TO
<input checked="" type="checkbox"/>	Beynon	Harvey	15/02/2009	3CB
<input checked="" type="checkbox"/>	Canick	Oliver	12/11/2008	3TO
<input checked="" type="checkbox"/>	Carter	Daniel	04/04/2009	3CB
<input checked="" type="checkbox"/>	Cassidy	Michael	02/01/2009	3TO
<input checked="" type="checkbox"/>	Cedric-Smith	Lucie	08/05/2009	3CB

3. Click the **Export** button in the **Results for export** panel to export the results.



Export button

4. The results that are exported are saved as an XML file. To specify the storage location of the XML file, click the **Browser** button to display the **Save As** dialog.



Browser button

IMPORTANT NOTE: Due to the sensitive nature of some of the data stored in SIMS, careful consideration should be given when specifying the location of any folder into which you save sensitive data, e.g. census returns, imported and exported CTFs, etc. You should be mindful of your school's responsibilities with respect to information security. Consider which users have access to the chosen folder, especially if the folder is shared on a Server. The DFE recommends ISO27001 as the standard for information security (<http://www.itgovernance.co.uk/iso27001.aspx>). If you are in any doubt, you should consult with your IT Security Officer before proceeding.

5. Enter a name for the results file and navigate to the location where you would like to save the file.
6. Click the **Finish** button.
7. When the export is complete, a message is displayed. Click the **OK** button to complete the process.

Exporting Results Using the CTF Routine

Use the Common Transfer File (CTF) process in SIMS via **Routines | CTF | Export CTF** to export Key Stage results if your LA does not accept the **Wizard Manager** export format.

Transferring Key Stage Results to Slough LA

COMMON TRANSFER FILE:

Use the Common Transfer File (CTF) export process in SIMS to export Key Stage results for the following Key Stages:

- EYFSP to Slough LA
- Key Stage 1 Teacher Assessments to Slough LA
- Phonics Assessment to Slough LA
This should include your Year 1 pupils plus your current Year 2 pupils who did not meet the expected standards for phonics decoding in Year 1 or who were absent or dis-applied from the check or have not taken the check for other reasons.

- Key Stage 2 Teacher Assessments to Standards and Testing Agency (STA) via NCA Tools website <https://ncatools.education.gov.uk/>

PROFORMA:

Use the relevant Microsoft Excel Pro forma to submit the following returns to Slough LA:

- GCSE
- Post 16

USING COMMON TRANSFER FILE (CTF)

Exporting results to Slough LA

1. Go to **Routines – Data Out – CTF – Export CTF**
2. In box 1 ensure all check boxes are selected including addresses.
3. In box 2 ensure you are viewing current students AND that you select the check box for “include students already exported”. Click on refresh students.
4. In box 3 filter on the relevant year group i.e. for Key Stage 1 assessment select Year 2. You should now only see Year 2 pupils.
5. Underneath destination LA/Other, right click in the first white box and left click on “select all”. All pupil records should now be highlighted in blue.
6. Left click in the first white box again and you should see a drop down box containing Local Authority names. Scroll down and select “Slough LA”. Slough LA should then be automatically populated in all records.
7. Now click on export CTF. Once the CTF has been successfully generated, you will receive a message containing the filename. Make a note of this (do not change the filename) and make sure you are familiar with where your CTFs are exported to. The message will include the number of pupils exported in the CTF. **Double check this number with the number of pupil’s eligible to ensure that all pupils eligible have been included.**
8. The CTF is now ready for transfer to Slough LA. This needs to be transferred using the DfE The School to School system (S2S) website: <https://sa.education.gov.uk/idp/Authn/UserPassword>.
9. Log in entering your username & password. Click on “S2S”. On the left hand side select “upload” and then “upload CTF File”. Next click on “choose file” and select the CTF file from where it’s saved on your network drive. Once selected click on “upload file”.
10. Ensure you see the **“successfully transferred”** message. Otherwise review the error message and repeat upload process.
11. The file should now be available to the LA. Please e-mail or ring either Aman Gill or Imran Mirza to confirm that the file has successfully transferred to the LA.

Aman Gill email: aman.gill@slough.gov.uk or Tel: 01753 875731
Imran Mirza email: Imran.mirza@slough.gov.uk or Tel: 01753 875706

Exporting Key Stage 2 Teacher Assessment (TA) and P scales results to Standards & Testing Agency (STA) via NCA Tools website:
<https://ncatools.education.gov.uk/Home.aspx>

Data must be submitted to STA via the 'Teacher assessment' section of the NCA tools website <https://ncatools.education.gov.uk/>. Teacher assessment data must be submitted by **Thursday 27th June 2019**. Early return of data is encouraged.

Teacher assessment: how to use the NCA tools website

https://assets.publishing.service.gov.uk/government/uploads/system/uploads/attachment_data/file/803093/2019_key_stage_2_submitting_teacher_assessment_data.pdf gives step-by-step instructions on how to:

- upload data
- view the data you have submitted
- deal with common errors

04 / Key Stage 1 Teacher Assessments and Tests

Introduction	35
Key Stage 1: Phonics Screening	35
Contents of the En KS1 Templates 2019 XML File	36
Composition of Key Stage 1 Teacher Assessments.....	37
Key Stage 1 Teacher Assessments and Tests - Grade Sets and Result Sets.....	38
Key Stage 1 Teacher Assessments and Tests - Aspects.....	38
Marksheet Entry: Key Stage 1 A. Teacher Assessments	39
Marksheet Entry: Key Stage 1 B. P Scale Data Entry	40
Marksheet Entry: Key Stage 1 C. Test Outcomes	41
Marksheet Entry: Key Stage 1 D. Broadsheet (Review).....	42
Composition of Key Stage 1 Tests	42

Introduction

As a result of significant curriculum reforms and the withdrawal of levels, teacher assessments and tests were implemented in 2016.

The tests are used to determine the necessary teacher assessments; these can also be based on class and homework. Schools are not required to send their test results to the LA and the data is not sent to the DfE. However, parents can request sight of their own child's test results at any time.

Key Stage 1: Phonics Screening

Marks for the Phonics Screening assessment range from 0-40.

The **Phonics Outcome** field is populated with the following values only if a pupil was unable to participate in the test:

- **A** - Absent
- **Q** - Maladministration
- **D** - Disapplied
- **L** - Left.

The following outcomes are no longer required. However, if the DfE receive a file containing these outcomes, the file will not be rejected.

- **Wa** - Met expected Phonics standard
- **Wt** - Did not meet expected Phonics standard.

Contents of the Phonics Wizards

The following templates and individual reports are provided in the Phonics wizards and templates:

Phonics Screening Templates 2019.xml – containing:

- Template: Phonics Screening Year 1 2019 (includes validation)
- Template: Phonics Screening Year 2 2019 (includes validation).

Year 1 Phonics Screening Wizard 2019.xml – containing:

- Template: Phonics Screening Year 1 2019
- Individual Report: KS1 Y1 Phonics Student Eng 2019
- Individual Report: KS1 Y1 Phonics Comparative Eng 2019.

Year 2 Phonics Screening Wizard 2019.xml – containing:

- Template: Phonics Screening Year 2 2019
- Individual Report: KS1 Y2 Phonics Comparative Eng 2019
- Individual Report: KS1 Y2 Phonics Student Eng 2019.

Contents of the En KS1 Templates 2019 XML File

The following marksheet templates are provided in the En KS1 Templates 2019.xml file:

- KS1 A. Teacher Assessments 2019
This marksheet can be used to store the Outcome for the KS1 Reading, Writing, Mathematics and Science Performance Descriptor of the new curriculum (Assessment without Levels) Teacher Assessment from 2016 onwards.
- KS1 B. P Scale Data Entry 2019
This marksheet enables you to enter a P Scale assessment for pupils who are working below the standard of the Pre-Key Stage (BLW) in Reading, Writing or Maths or who have not met the expected standard (HNM) in Science.
- KS1 C. Test Outcomes 2019
This marksheet can be used to enter results of the new curriculum (Assessment without Levels) tests that supported the Teacher Assessments made as part of the Key Stage 1 arrangements from 2016 onwards.
- KS1 D. Broadsheet (Review) 2019
This marksheet can be used to review the Test, Teacher Assessment and P Scale results of the new curriculum (Assessment without Levels) that have been entered in support of the Key Stage 1 arrangements from 2016 onwards.

Composition of Key Stage 1 Teacher Assessments

The Key Stage 1 Teacher Assessments for 2019 consist of:

- English Reading
- English Writing
- Mathematics
- Science.

There is no longer an overall English assessment.

A code has been added to all Key Stage 1 Teacher Assessments from 2018.

The following gradesets have been extended to include the new Q code for Maladministration:

- KS1-ENG-REA-TA-NC-OutcomeGrade
- KS1-ENG-WRI-TA-NC-OutcomeGrade
- KS1-MAT-MAT-TA-NC-OutcomeGrade
- KS1-SCI-SCI-TA-NC-OutcomeGrade.

Grade Set Details : KS1-ENG-REA-TA-NC-OutcomeGrade

Save Undo Print Clone

1 Basic 2 Properties

1 Basic

Name: KS1-ENG-REA-TA-NC-OutcomeGrade

Notes: Used to provide the grade set for the KS1 Reading Performance Descriptor of the reformed curriculum (Assessment without Levels) Teacher Assessment from 2016 onwards

Version	Start Date	End Date
	01/09/2015	31/08/2017
	01/09/2017	31/08/2018
	01/09/2018	

Grade	Description	Value	PG
GDS	Working in greater depth at the e	0	
EXS	Working at the expected standar	0	
WTS	Working towards the expected st	0	
PK4	Pre Key Stage Standard 4	0	
PK3	Pre Key Stage Standard 3	0	
PK2	Pre Key Stage Standard 2	0	
PK1	Pre Key Stage Standard 1	0	
BLW	Below the standard of the pre-ke	0	
A	Absent	0	
D	Disapplied	0	

The Q code is an allowed import value in files from STA but schools and Local Authorities must not input the code manually.

Key Stage 1 Teacher Assessments and Tests - Grade Sets and Result Sets

The following new grade sets are available from the Key Stage 1 Wizard England 2019.xml file.

There is one grade set per aspect.

- KS1-ENG-GPM-TT-NE-OutcomeGrade
- KS1-ENG-REM-TT-NE-OutcomeGrade
- KS1-MAT-MAM-TT-NE-OutcomeGrade
- KS1-ENG-REA-TA-NC-OutcomeGrade
- KS1-ENG-WRI-TA-NC-OutcomeGrade
- KS1-MAT-MAT-TA-NC-OutcomeGrade
- KS1-SCI-SCI-TA-NC-OutcomeGrade.

The result set has not changed and remains the Key Stage 1 Validated Result.

Key Stage 1 Teacher Assessments and Tests - Aspects

The aspect names contain 'AWL' to indicate that these aspects relate to the Assessment Without Levels curriculum.

Aspect External_ID	Aspect Name	Aspect Column Heading
KS1-ENG-SPE-TT-NM	EN KS1: Spelling Test Mark AWL	KS1 Spelling Mark
KS1-ENG-GPV-TT-NM	EN KS1: GPV Test Mark AWL	KS1 GPV Mark
KS1-ENG-GPS-TT-NS	EN KS1: GPVS Test Total Mark AWL	KS1 GPVS Total Mark
KS1-ENG-GSS-TT-NB	EN KS1: GPVS Test Scaled Score AWL	KS1 GPVS Scaled Score
KS1-ENG-GPM-TT-NE	EN KS1: GPVS Test Outcome AWL	KS1 GPVS Outcome
KS1-ENG-RD1-TT-NM	EN KS1: Reading Test 1 Mark AWL	KS1 Reading 1 Mark
KS1-ENG-RD2-TT-NM	EN KS1: Reading Test 2 Mark AWL	KS1 Reading 2 Mark
KS1-ENG-RDT-TT-NS	EN KS1: Reading Test Total Mark AWL	KS1 Reading Total Mark
KS1-ENG-RSS-TT-NB	EN KS1: Reading Test Scaled Score AWL	KS1 Reading Scaled Score
KS1-ENG-REM-TT-NE	EN KS1: Reading Test Outcome AWL	KS1 Reading Outcome
KS1-MAT-MAR-TT-NM	MA KS1: Maths Arithmetic Test Mark AWL	KS1 Maths Arithmetic Mark
KS1-MAT-MRE-TT-NM	MA KS1: Maths Reasoning Test Mark AWL	KS1 Maths Reasoning Mark
KS1-MAT-SUB-TT-NS	MA KS1: Maths Test Total Mark AWL	KS1 Maths Total Mark
KS1-MAT-MSS-TT-NB	MA KS1: Maths Test Scaled Score AWL	KS1 Maths Scaled Score
KS1-MAT-MAM-TT-NE	MA KS1: Maths Test Outcome AWL	KS1 Maths Outcome
KS1-ENG-REA-TA-NC	EN KS1: Reading TA AWL	KS1 Reading TA
KS1-ENG-WRI-TA-NC	EN KS1: Writing TA AWL	KS1 Writing TA
KS1-MAT-MAT-TA-NC	MA KS1: Maths TA AWL	KS1 Maths TA
KS1-SCI-SCI-TA-NC	SC KS1: Science TA AWL	KS1 Science TA

Marksheet Entry: Key Stage 1 A. Teacher Assessments

1. Enter the performance descriptor outcomes for English Reading and Writing, Mathematics and Science.
2. Click the **Calculate** button. The final two columns alert you to any missing entries.

Marksheet Entry : KS1 A. Teacher Assessments 2019 : Year 2

Save Undo Print Export Calculate

1 Basic Details 2 Marksheet

1 Basic Details

Notes
This Marksheet can be used to store the Outcome for the KS1 Reading, Writing, Mathematics and Science Performance Descriptor of the reformed curriculum (Assessment without Levels) Teacher Assessment from 2016 onwards.

Last Used

Data entry for this Marksheet is complete

2 Marksheet

Result Date 16/01/2019 Group Membership Date 16/01/2019 Refresh Summary Narrow Zoom Reveal Freeze Additional Student Columns

Group Filter

Students	KS1 Reading TA Key Stage 1 Validated Result	KS1 Writing TA Key Stage 1 Validated Result	KS1 Maths TA Key Stage 1 Validated Result	KS1 Science TA Key Stage 1 Validated Result	Missing Entries Check	No of Missing Entries
ADAMS, Nancy	EXS	GDS	WTS	EXS	Ok!	0.00
ALALA, Candis	EXS	GDS	WTS	EXS	Ok!	0.00
BARDEN, Olivia	EXS	GDS	WTS	EXS	Ok!	0.00
BATEMAN, Vincent	EXS	GDS	WTS	EXS	Ok!	0.00
BHATI, Aini	EXS	GDS	WTS	EXS	Ok!	0.00
BOIAN, Claudiu	EXS	GDS	WTS	EXS	Ok!	0.00
BROWN, Ingrid	EXS	GDS	WTS	EXS	Ok!	0.00
BROZ, Konrad	EXS	GDS	WTS	EXS	Ok!	0.00
CAIRNS, Matthew	EXS	GDS	WTS	EXS	Ok!	0.00
CANZANO, Michael	EXS	GDS	WTS	EXS	Ok!	0.00
CARLTON, Eleanor	EXS	GDS	WTS	EXS	Ok!	0.00

3. Review the outcomes and repeat the process, if necessary.
4. Click the **Save** button.

Validation checks are performed for missing result entries and an indication given of the number of missing entries that still require completion.

IMPORTANT NOTES: P Scale assessments for pupils who are working below the standard of the Pre-Key Stage (BLW) in Reading, Writing or Mathematics or who have not met the expected standard (HNM) in Science should be entered in Marksheet KS2 B. P Scale Data Entry.

It is recommended that the D grade is used instead of the U grade to indicate a disapplied grade in the **KS1 Science TA Key Stage 1 Validated Result** column. This is in keeping with the grades used in the other teacher assessments for Reading, Writing and Maths at Key Stage 1.

Marksheet Entry: Key Stage 1 B. P Scale Data Entry

For 2019, the associated gradeset for the relevant P Scales has been amended to remove the grades P5, P6, P7 and P8.

The screenshot displays the 'Marksheet Entry: KS1 B. P Scale Data Entry 2019: Year 2' application. The 'Basic Details' section includes a note explaining the marksheet's purpose and a 'Last Used' field. The 'Marksheet' section shows a grid with columns for various P Scale components: English P Scales (Reading, Writing, Speaking, Listening), Mathematics P Scales, and Use Maths P Scales. The grid lists students such as ADAMS, Nancy, ALALA, Candis, BARDEN, Olivia, etc. A 'View Select Grade' dialog box is open, showing a list of grades: P3, P3i, P2i, P2, P1i, P1, and NOTSEN. The 'Apply & Next' button is highlighted.

1. For pupils with an English Reading or Writing outcome of BLW, ensure that there is a P Scale entry for English or one of its components.
2. For pupils with a Maths Outcome of BLW, ensure that there is a P Scale entry for Maths or one of its components.
3. For pupils with a Science Level of HNM, a P Scale entry is optional.
4. Once data has been entered, click the **Calculate** button to apply validation rules. Pupils with issues will be shown as **Failed!**. Amend data as necessary and then click the **Calculate** button again.
5. Click the **Save** button.

Important Notes to Remember

- P Scale parameters for an assessment cannot be present for both overall subject and for subject component, unless all parameters are recorded as NOTSEN.
- If Reading is BLW, then English or Reading P Scale should be entered. Speaking and Listening are optional.
- If Writing is BLW, the English or Writing P Scale should be entered. Speaking and Listening are optional.
- Reading and Writing must both be set to BLW if overall English P Scale is in use.

Marksheet Entry: Key Stage 1 C. Test Outcomes

There are no validation checks performed on the results entered for test outcomes.

Marksheet Entry: KS1 C. Test Outcomes 2019: Year 2

Save Undo Print Export Calculate

1 Basic Details 2 Marksheet

1 Basic Details

Notes
This Marksheet can be used to enter results of the reformed curriculum (Assessment without Levels) tests that supported the Teacher Assessments made as part of the KS1 arrangements from 2016 onwards.

Last Used

Data entry for this Marksheet is complete

2 Marksheet

Result Date: 16/01/2019 Group Membership Date: 16/01/2019 Refresh Summary Narrow Zoom Reveal Freeze Additional Student Columns

Group Filter

Students	KS1 GPVVS Tests	KS1 GPV Mark Key Stage 1 Validated Result	KS1 Spelling Mark Key Stage 1 Validated Result	KS1 GPVVS Total Mark Key Stage 1 Validated Result	KS1 GPVVS Scaled Score Key Stage 1 Validated Result	KS1 GPVVS Outcomes Key Stage 1 Validated Result	KS1 Reading Tests	KS1 Reading 1 Mark Key Stage 1 Validated Result	KS1 Reading 2 Mark Key Stage 1 Validated Result	KS1 Reading Total Mark Key Stage 1 Validated Result	KS1 Reading Scaled Score Key Stage 1 Validated Result	KS1 Reading Outcome Key Stage 1 Validated Result
ADAMS, Nancy	----->					AS	----->				115	
ALALA, Candis	----->					AS	----->				115	
BARDEN, Olivia	----->					AS	----->				115	
BATEMAN, Vincent	----->					AS	----->				115	
BHATI, Aini	----->					AS	----->				115	
BOIAN, Claudiu	----->					AS	----->				115	
BROWN, Ingrid	----->					AS	----->				115	
BROZ, Konrad	----->					AS	----->				115	
CAIRNS, Matthew	----->					AS	----->				115	
CANZANO, Michael	----->						----->					

Marksheet Entry: Key Stage 1 D. Broadsheet (Review)

The results displayed in the Broadsheet Review marksheet are separated by coloured spaces, to differentiate between the different teacher assessments and tests.

Marksheet Entry: KS1 D. Broadsheet (Review) 2019 : Year 2

Save Undo Print Export Calculate

1 Basic Details 2 Marksheet

1 Basic Details

Notes: This Marksheet can be used to review the Test, Teacher Assessment and P-Scale results of the reformed curriculum (Assessment without Levels) that have been entered in support of the KS1 arrangements from 2016 onwards.

Last Used:

Data entry for this Marksheet is complete

2 Marksheet

Result Date: 16/01/2019 Group Membership Date: 16/01/2019 Refresh Summary Narrow Zoom Reveal Freeze Additional Student Col

Group Filter:

Students	KS1 GPVS Tests	KS1 GPV Mark Key Stage 1 Validated Result	KS1 Spelling Mark Key Stage 1 Validated Result	KS1 GPVS Total Mark Key Stage 1 Validated Result	KS1 GPVS Scaled Score Key Stage 1 Validated Result	KS1 GPVS Outcome Key Stage 1 Validated Result	KS1 Reading Tests	KS1 Reading 1 Mark Key Stage 1 Validated Result	KS1 Reading 2 Mark Key Stage 1 Validated Result	KS1 Reading Total Mark Key Stage 1 Validated Result	KS1 Reading Scaled Score Key Stage 1 Validated Result	KS1 Reading Outcome Key Stage 1 Validated Result
ADAMS, Nancy						AS					115	
ALALA, Candis						AS					115	
BARDEN, Olivia						AS					115	
BATEMAN, Vincent						AS					115	
BHATI, Aini						AS					115	
BOIAN, Claudiu						AS					115	
BROWN, Ingrid						AS					115	
BROZ, Konrad						AS					115	
CAIRNS, Matthew						AS					115	

NOTE: This marksheet is for review purposes only. If you wish to amend any of the data shown in it, please use Marksheets KS2 A, B or C and then reload this marksheet.

Composition of Key Stage 1 Tests

The tests consist of:

- English Spelling (20 marks)
- English Grammar, Punctuation and Vocabulary (20 marks)
- = Total Score (40 marks)
- + Scaled Score (999)
- + Outcome (Performance Descriptor).
- English Reading Paper 1 (20 marks)
- English Reading Paper 2 (20 marks)
- = Total Score (40 marks)
- + Scaled Score (999)
- + Outcome (Performance Descriptor).

NOTE: There is no longer a separate test for English Writing.

- Mathematics paper 1: Arithmetic (25 marks)
- Mathematics paper 2: Reasoning (35 marks)
- = Total Score (60 marks)
- + Scaled Score (999)
- + Outcome (Performance Descriptor).

05/ Key Stage 2 Teacher Assessments and Tests

Introduction	45
Contents of the En KS2 Templates 2019 XML File	45
En KS2 Aspects for 2019	46
Composition of Key Stage 2 Teacher Assessments.....	47
Key Stage 2 Teacher Assessments and Tests - Grade Sets and Result Sets.....	48
Key Stage 2 Teacher Assessments and Tests - Aspects.....	49
Marksheet Entry: Key Stage 2 A. Teacher Assessments 2019	49
Marksheet Entry: Key Stage 2 B. P Scale Data Entry 2019	50
Marksheet Entry: Key Stage 2 C. Test Outcomes 2019	51
Marksheet Entry: Key Stage 2 D. Broadsheet Review 2019.....	52
Composition of Key Stage 2 Tests	52

Introduction

As a result of significant curriculum reforms and the withdrawal of levels, teacher assessments and tests were implemented in 2016. These still occur at the end of each Key Stage: KS1 (year 2) and KS2 (year 6).

Three outcomes are in effect, two for tests only and the third for both assessments and tests:

- Outcome (Performance Descriptor) - a brief description of a pupil's ability based on tests and/or class and home work.
- Raw Score - a mark assigned from a number of tests in each area of learning, e.g. Reading or Maths.
- Scaled Score - the raw score is converted to a fixed scale between 0-999. The scale will be determined once the 2018 tests are complete.

Contents of the En KS2 Templates 2019 XML File

The following marksheet templates are provided in the En KS2 Templates 2019.xml file:

- KS2 A. Teacher Assessments 2019

This marksheet can be used to store the Outcome for the KS2 Reading, Writing, Mathematics and Science Performance Descriptor of the curriculum (Assessment without Levels) Teacher Assessment from 2016 onwards.

NOTE: It is no longer a statutory requirement to record assessments for pupil/students who are working at the expected level or higher in Reading or Maths. Where a pupil/student is working at a pre-Key Stage standard or lower, assessments must still be recorded during 2019. It is still a statutory requirement to record assessments for Writing and Science at all levels.

- **KS2 B. P Scale Data Entry 2019**
This marksheet enables you to enter a P Scale assessment for pupils who are working below the standard of the Pre-Key Stage (BLW) in Reading, Writing or Maths or who have not met the expected standard (HNM) in Science. For 2019, the associated gradeset for the relevant P Scales has been amended to remove the grades P5, P6, P7 and P8.
- **KS2 C. Test Outcomes 2019**
This marksheet can be used to enter results of the new curriculum (Assessment without Levels) tests that supported the Teacher Assessments made as part of the Key Stage 2 arrangements from 2016 onwards.
- **KS2 D. Broadsheet (Review) 2019**
This marksheet can be used to review the Test, Teacher Assessment and P-Scales results of the new curriculum (Assessment without Levels) that have been entered in support of the Key Stage 2 arrangements from 2016 onwards.

En KS2 Aspects for 2019

The following aspects are available for use with the En KS2 templates:

- EN KS2: Reading TA AWL
- EN KS2: Writing TA AWL
- MA KS2: Maths TA AWL
- SC KS2: Science TA AWL
- EN KS2: GPV Test Mark AWL
- EN KS2: GPVS Outcome AWL
- EN KS2: GPVS Scaled Score AWL
- EN KS2: GPVS Total Test Mark AWL
- EN KS2: Reading Test Mark AWL
- EN KS2: Reading Test Outcome AWL
- EN KS2: Reading Test Scaled Score AWL
- EN KS2: Spelling Test Mark AWL
- MA KS2: Maths Arithmetic Test Mark AWL
- MA KS2: Maths Outcome AWL
- MA KS2: Maths Reasoning Test 1 Mark AWL
- MA KS2: Maths Reasoning Test 2 Mark AWL
- MA KS2: Maths Scaled Score AWL
- MA KS2: Maths Total Test Mark AWL

- EN P Scale: English
- EN P Scale: Listening
- EN P Scale: Reading
- EN P Scale: Speaking
- EN P Scale: Writing
- MA P Scale: Maths
- MA P Scale: Number
- MA P Scale: Shape, Space, Measures
- MA P Scale: Using Applying Maths
- SC P Scale: Science.

Composition of Key Stage 2 Teacher Assessments

The Key Stage 2 Teacher Assessments from 2018 consist of:

- Reading
- Writing
- Mathematics
- Science.

Schools are required to send the Teacher Assessment results to the STA for inclusion in the National Curriculum Assessment process. Additionally, schools have a responsibility to inform parents of their child's Teacher Assessment results.

05| Key Stage 2 Teacher Assessments and Tests

A new Q code for Maladministration has been added to all Key Stage 2 Teacher Assessments from 2018. The Q code is an allowed import value in files from STA but schools and Local Authorities must not input the code manually.

Grade Set Details : KS2-ENG-REA-TA-NC-OutcomeGrade

Save Undo Print Clone

1 Basic 2 Properties

1 Basic

Name: KS2-ENG-REA-TA-NC-OutcomeGrade

Notes: Used to provide the grade set for the KS2 Reading Performance Descriptor of the reformed curriculum (Assessment without Levels) Teacher Assessment from 2016 onwards

Version:

Start Date	End Date
01/09/2015	31/08/2017
01/09/2017	31/08/2018
01/09/2018	

Grades for selected version:

Grade	Description	Value	PG
PK6	Pre Key Stage Standard 6	0	
PK5	Pre Key Stage Standard 5	0	
PK4	Pre Key Stage Standard 4	0	
PK3	Pre Key Stage Standard 3	0	
PK2	Pre Key Stage Standard 2	0	
PK1	Pre Key Stage Standard 1	0	
BLW	Below the standard of the pre-ke	0	
A	Absent	0	
D	Disapplied	0	
L	Left	0	

Key Stage 2 Teacher Assessments and Tests - Grade Sets and Result Sets

The following grade sets are available from the Key Stage 2 Wizard England 2019.xml file.

There is one grade set per aspect.

- KS2-ENG-GPM-TT-NE-OutcomeGrade
- KS2-ENG-REA-TA-NC-OutcomeGrade
- KS2-ENG-REM-TT-NE-OutcomeGrade
- KS2-ENG-WRI-TA-NC-OutcomeGrade
- KS2-MAT-MAM-TT-NE-OutcomeGrade
- KS2-MAT-MAT-TA-NC-OutcomeGrade
- KS2-SCI-SCI-TA-NC-OutcomeGrade.

The result set has not changed and remains the Key Stage 2 Validated Result.

Key Stage 2 Teacher Assessments and Tests - Aspects

The aspect names contain 'AWL' to indicate that these aspects relate to the Assessment Without Levels curriculum.

Aspect External_ID	Aspect Name	Aspect Column Heading
KS2-ENG-GPV-TT-NM	EN KS2: GPV Test Mark AWL	KS2 GPV Mark
KS2-ENG-SPE-TT-NM	EN KS2: Spelling Test Mark AWL	KS2 Spelling Mark
KS2-ENG-GPS-TT-NS	EN KS2: GPVS Total Test Mark AWL	KS2 GPVS Total Mark
KS2-ENG-GSS-TT-NB	EN KS2: GPVS Scaled Score AWL	KS2 GPVS Scaled Score
KS2-ENG-GPM-TT-NE	EN KS2: GPVS Outcome AWL	KS2 GPVS Outcome
KS2-ENG-RD1-TT-NM	EN KS2: Reading Test Mark AWL	KS2 Reading Mark
KS2-ENG-RSS-TT-NB	EN KS2: Reading Test Scaled Score AWL	KS2 Reading Scaled Score
KS2-ENG-REM-TT-NE	EN KS2: Reading Test Outcome AWL	KS2 Reading Outcome
KS2-MAT-MAR-TT-NM	MA KS2: Maths Arithmetic Test Mark AWL	KS2 Maths Arithmetic Mark
KS2-MAT-MR1-TT-NM	MA KS2: Maths Reasoning Test 1 Mark AWL	KS2 Math Reasoning 1 Mark
KS2-MAT-MR2-TT-NM	MA KS2: Maths Reasoning Test 2 Mark AWL	KS2 Math Reasoning 2 Mark
KS2-MAT-SUB-TT-NS	MA KS2: Maths Total Test Mark AWL	KS2 Maths Total Mark
KS2-MAT-MSS-TT-NB	MA KS2: Maths Scaled Score AWL	KS2 Maths Scaled Score
KS2-MAT-MAM-TT-NE	MA KS2: Maths Outcome AWL	KS2 Maths Outcome
KS2-ENG-REA-TA-NC	EN KS2: Reading TA AWL	KS2 Reading TA
KS2-ENG-WRI-TA-NC	EN KS2: Writing TA AWL	KS2 Writing TA
KS2-MAT-MAT-TA-NC	MA KS2: Maths TA AWL	KS2 Maths TA
KS2-SCI-SCI-TA-NC	SC KS2: Science TA AWL	KS2 Science TA

Marksheet Entry: Key Stage 2 A. Teacher Assessments 2019

1. Enter the performance descriptor outcomes for English Reading and Writing, Mathematics and Science.
2. Click the **Calculate** button. The final two columns alert you to any missing entries.

Marksheet Entry: KS2 A. Teacher Assessments 2019: Year 5, Holyoake, Gerald

Save Undo Print Export Calculate

1 Basic Details 2 Marksheet

1 Basic Details

Notes: This Marksheet can be used to store the Outcome for the KS2 Reading, Writing, Mathematics and Science Performance Descriptor of the reformed curriculum (Assessment without Levels) Teacher Assessment from 2016 onwards.

Last Used:

Data entry for this Marksheet is complete

2 Marksheet

Result Date: 16/01/2019 Group Membership Date: 16/01/2019 Refresh Summary Narrow Zoom Reveal Freeze Additional Student Columns

Group Filter:

Students	KS2 Reading TA Key Stage 2 Validated Present	KS2 Writing TA Key Stage 2 Validated Present	KS2 Maths TA Key Stage 2 Validated Present	KS2 Science TA Key Stage 2 Validated Present	Missing Entries Check	No of Missing Entries
ABDULLAH, Tamwar	PK5	EXS	PK5	EXS	Ok!	0.00
BEYNON, Harvey	PK5	EXS	PK5	EXS	Ok!	0.00
CARRICK, Oliver	PK5	EXS	PK5	EXS	Ok!	0.00
CARTER, Daniel	PK5	EXS	PK5	EXS	Ok!	0.00
CASSIDY, Michael	PK6	GDS	PK5	EXS	Ok!	0.00
CEDRIC-SMITH, Lucie	PK6	GDS	PK5	EXS	Ok!	0.00
CIPRIO, Alicia	PK6	GDS	PK5	EXS	Ok!	0.00
CLARKE, Matthew	PK6	GDS	PK5	EXS	Ok!	0.00

3. Review the outcomes and repeat the process, if necessary.

- Click the **Save** button.

Validation checks are performed for missing result entries and an indication given of the number of missing entries that still require completion.

IMPORTANT NOTE: P Scale assessments for pupils who are working below the standard of the Pre-Key Stage (BLW) in Reading, Writing or Mathematics or who have not met the expected standard (HNM) in Science should be entered in Marksheet KS2 B. P Scale Data Entry.

Marksheet Entry: Key Stage 2 B. P Scale Data Entry 2019

For 2019, the associated gradeset for the relevant P Scales has been amended to remove the grades P5, P6, P7 and P8.

Marksheet Entry : KS2 B. P Scale Data Entry 2019 : Year 5, Holyoake, Gerald

Save Undo Print Export Calculate

1 Basic Details 2 Marksheet

1 Basic Details

Notes: This Marksheet enables you to enter a P Scale assessment for pupils, at KS2, who are working below the standard of the Pre Key Stage (BLW) in Reading, Writing or Maths or optionally for those who have not met the expected standard (HNM) in Science. To help identify these pupils, existing TA entries are displayed in read-only columns. Please read all the notes below and then follow the five steps:-

Last Used: 16/01/2019

Data entry for this Marksheet is complete

2 Marksheet

Result Date: 16/01/2019 Group Membership Date: 16/01/2019 Refresh Summary Narrow Zoom Reveal Freeze Additional Student Columns

Group Filter:

Students	English P Scales	KS2 Reading TA Key Stage 2 Validated Result	P Scale Reading Key Stage 2 Validated Result	KS2 Writing TA Key Stage 2 Validated Result	P Scale Writing Key Stage 2 Validated Result	P Scale Speaking Key Stage 2 Validated Result	P Scale Listening Key Stage 2 Validated Result	P Scale English Key Stage 2 Validated Result	English P Scales Check!	Mathematics P Scales	KS2 Maths TA Key Stage 2 Validated Result	P Scale Number Key Stage 2 Validated Result	P Scale Use Maths Key Stage 2 Validated Result
ABDULLAH, Tamwar	PK5	P4	EXS	P4	P4	P4	P4	P3ii			PK5		
BEYNON, Harvey	PK5	P4	EXS	P4	P4	P4	P4	P3ii			PK5		
CARRICK, Oliver	PK5	P4	EXS	P4	P4	P4	P4	P3ii			PK5		
CARTER, Daniel	PK5	P4	EXS	P4	P4	P4	P4	P3ii			PK5		
CASSIDY, Michael	PK6	P4	GDS	P4	P4	P4	P4	P3ii			PK5		
CEDRIC-SMITH, Lucie	PK6	P4	GDS	P4	P4	P4	P4	P3ii			PK5		
CIPRIO, Alicia	PK6	P4	GDS	P4	P4	P4	P4	P3ii			PK5		
CLARKE, Matthew	PK6	P4	GDS	P4	P4	P4	P4	P3ii			PK5		

- For pupils with an English Reading or Writing outcome of BLW, ensure that there is a P Scale entry for English or one of its components.
- For pupils with a Maths Outcome of BLW, ensure that there is a P Scale entry for Maths or one of its components.
- For pupils with a Science Level of HNM, a P Scale entry is optional for Science.
- Once data has been entered, click the **Calculate** button to apply validation rules. Pupils with issues will be shown as **Failed!**. Amend data as necessary and then click the **Calculate** button again.
- Click the **Save** button.

Important Notes to Remember

- P Scale parameters for an assessment cannot be present for both overall subject and for subject component, unless all parameters are recorded as NOTSEN.
- If Reading is BLW, then English or Reading P Scale should be entered. Speaking and Listening are optional.
- If Writing is BLW, the English or Writing P Scale should be entered. Speaking and Listening are optional.
- Reading and Writing must both be set to BLW if overall English P Scale is to in use.

Marksheet Entry: Key Stage 2 C. Test Outcomes 2019

There are no validation checks performed on the results entered for test outcomes.

Marksheet Entry : KS2 C. Test Outcomes 2019 : Year 5, Holyoake, Gerald

Save Undo Print Export Calculate

1 Basic Details 2 Marksheet

1 Basic Details

Notes
This Marksheet can be used to enter results of the reformed curriculum (Assessment without Levels) tests that supported the Teacher Assessments made as part of the KS2 arrangements from 2016 onwards.

Last Used

Data entry for this Marksheet is complete

2 Marksheet

Result Date 16/01/2019 Group Membership Date 16/01/2019 Refresh Summary Narrow Zoom Reveal Freeze Additional Student Columns

Group Filter

Students	KS2 GPVS Tests	KS2 Spelling Mark Key Stage 2 Validated Result	KS2 GPV Mark Key Stage 2 Validated Result	KS2 GPVS Total Mark Key Stage 2 Validated Result	KS2 GPVS Scaled Score Key Stage 2 Validated Result	KS2 GPVS Outcome Key Stage 2 Validated Result	KS2 Reading Tests	KS2 Reading Mark Key Stage 2 Validated Result	KS2 Reading Scaled Score Key Stage 2 Validated Result	KS2 Reading Outcome Key Stage 2 Validated Result	KS2 Mathematics Tests	KS2 Maths Arithmetic Mark Key Stage 2 Validated Result	KS2 Math Reasoning 1 Mark Key Stage 2 Validated Result
ABDULLAH, Tamwar	→						→				→		
BEYNON, Harvey	→						→				→		
CARRICK, Oliver	→						→				→		
CARTER, Daniel	→						→				→		
CASSIDY, Michael	→						→				→		
CEDRIC-SMITH, Lucie	→						→				→		
CIPRIO, Alicia	→						→				→		
CLARKE, Matthew	→						→				→		
COLE, Samuel	→						→				→		

Marksheet Entry: Key Stage 2 D. Broadsheet Review 2019

The results displayed in the Broadsheet Review marksheet are separated by coloured spaces, to differentiate the different teacher assessments and tests.

Marksheet Entry : KS2 D. Broadsheet (Review) 2019 : Year 5, Holyoake, Gerald

Save Undo Print Export Calculate

1 Basic Details 2 Marksheet

1 Basic Details

Notes: This Marksheet can be used to review the Test, Teacher Assessment and P-Scales results of the reformed curriculum (Assessment without Levels) that have been entered in support of the KS2 arrangements from 2016 onwards.

Last Used:

Data entry for this Marksheet is complete

2 Marksheet

Result Date: 16/01/2019 Group Membership Date: 16/01/2019 Refresh Summary Narrow Zoom Reveal Freeze Additional S

Group Filter:

Students	KS2 GPVS Tests	KS2 Spelling Mark Key Stage 2 Validated Result	KS2 GPV Mark Key Stage 2 Validated Result	KS2 GPVS Total Mark Key Stage 2 Validated Result	KS2 GPVS Scaled Score Key Stage 2 Validated Result	KS2 GPVS Outcome Key Stage 2 Validated Result	KS2 Reading Tests	KS2 Reading Mark Key Stage 2 Validated Result	KS2 Reading Scaled Score Key Stage 2 Validated Result	KS2 Reading Outcome Key Stage 2 Validated Result	KS2 Mathematics Tests
ABDULLAH, Tamwar	----->						----->				----->
BEYNON, Harvey	----->						----->				----->
CARRICK, Oliver	----->						----->				----->
CARTER, Daniel	----->						----->				----->
CASSIDY, Michael	----->						----->				----->
CEDRIC-SMITH, Lucie	----->						----->				----->
CIPRIO, Alicia	----->						----->				----->
CLARKE, Matthew	----->						----->				----->
COLE, Samuel	----->						----->				----->
DANES, Tilly	----->						----->				----->
DEXTER, Bethany	----->						----->				----->
DIMONACO, Silvana	----->						----->				----->
ERICKSON, Scarlett	----->						----->				----->
EVANS, Chelsey	----->						----->				----->
EWAS, Kasia	----->						----->				----->

NOTE: This marksheet is for review purposes only. If you wish to amend any of the data shown in it, please use Marksheets KS2 A, B or C and then reload this marksheet.

Composition of Key Stage 2 Tests

The tests consist of:

- English Spelling (20 marks)
- English Grammar, Punctuation and Vocabulary (50 marks)
- = Total Score (70 marks)
- + Scaled Score (999)
- + Outcome (Performance Descriptor).
- English Reading Paper 1 (50 marks)
- = Scaled Score (999)

- + Outcome (Performance Descriptor).

NOTE: There is no longer a separate test for English Writing.

- Mathematics paper 1: Arithmetic (40 marks)
- Mathematics paper 2: Reasoning (35 marks)
- Mathematics paper 3: Reasoning (35 marks)
- = Total Score (110 marks)
- + Scaled Score (999)
- + Outcome (Performance Descriptor).

Index

A

access rights.....	15
AMPA	
installing.....	5
assessments	
at Key Stage 1	4
at Key Stage 2	4
at Key Stage 3	4

C

CTF	
exporting KS2 and 3 results	32

E

editing	
English key stage marksheets	23
English key stage marksheets	
editing.....	23
exporting	
key stage results	30
exporting results	
key stage 2 and 3	32
using CTF	32

G

groups	
selecting.....	21

I

importing	
key stage packs.....	15

K

key stage 2	
exporting results	32
key stage 3	
exporting results	32
key stage marksheets	
English	23

key stage packs	
importing.....	15
selecting.....	20
key stage reports	
previewing and printing	29
key stage results	
exporting	30
sending	32

M

marksheets	
editing English key stage	23
measuring progress	
programmes of study	5

P

P Scale Templates	27
permissions	15
previewing	
key stage reports.....	29
printing	
key stage reports.....	30

Q

QCDA	
sending key stage results	32

R

reports	
previewing and printing	29
results	
exporting key stage	30
running	
wizard manager.....	19

S

selecting	
key stage packs.....	20
sending key stage results	32
QCDA	32

I | Index

U

using

CTF for KS2 and 3 results export 32

W

wizard manager

running 19